

For Research Use Only

IGFBP3 Recombinant antibody, PBS Only (Detector)

Catalog Number: 84470-1-PBS



Basic Information

Catalog Number: 84470-1-PBS	GenBank Accession Number: NM_000598.5	Purification Method: Protein A purification
Size: 100ug , Concentration: 1 mg/ml by Nanodrop;	GeneID (NCBI): 3486	CloneNo.: 241723A6
Source: Rabbit	UNIPROT ID: P17936-1	
Isotype: IgG	Full Name: insulin-like growth factor binding protein 3	
	Calculated MW: 32 kDa	

Applications

Tested Applications:
Cytometric bead array, Sandwich ELISA, Indirect ELISA, Sample test

Species Specificity:
human

Product Information

84470-1-PBS targets IGFBP3 as part of a matched antibody pair:

MP01352-1: 84470-2-PBS capture and 84470-1-PBS detection (validated in Cytometric bead array)

MP01352-2: 84470-3-PBS capture and 84470-1-PBS detection (validated in Cytometric bead array, Sandwich ELISA)

Unconjugated rabbit recombinant monoclonal antibody in PBS only (BSA and azide free) storage buffer at a concentration of 1 mg/mL, ready for conjugation. Created using Proteintech's proprietary in-house recombinant technology. Recombinant production enables unrivalled batch-to-batch consistency, easy scale-up, and future security of supply.

This conjugation ready format makes antibodies ideal for use in many applications including: ELISAs, multiplex assays requiring matched pairs, mass cytometry, and multiplex imaging applications. Antibody use should be optimized by the end user for each application and assay.

Storage

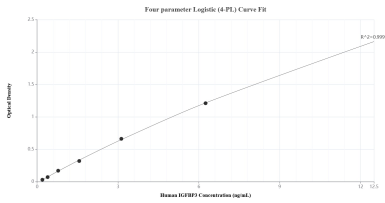
Storage:
Store at -80°C.

Storage Buffer:
PBS Only

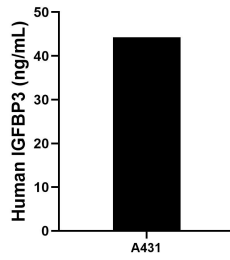
For technical support and original validation data for this product please contact:
T: 1 (888) 4PTGLAB (1-888-478-4522) (toll free in USA), or 1(312) 455-8498 (outside USA) E: proteintech@ptglab.com
W: ptglab.com

This product is exclusively available under Proteintech Group brand and is not available to purchase from any other manufacturer.

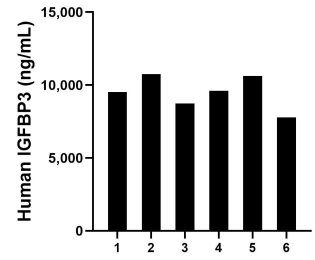
Selected Validation Data



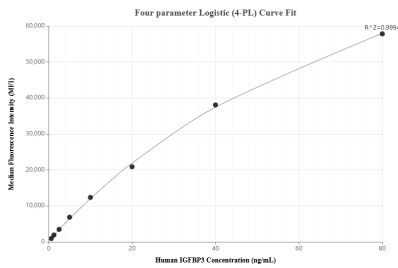
Sandwich ELISA standard curve of MP01352-2, Human IGFBP3 Recombinant Matched Antibody Pair - PBS only. 84470-3-PBS was coated to a plate as the capture antibody and incubated with serial dilutions of standard Eg1827. 84470-1-PBS was HRP conjugated as the detection antibody. Range: 0.195-12.5 ng/mL



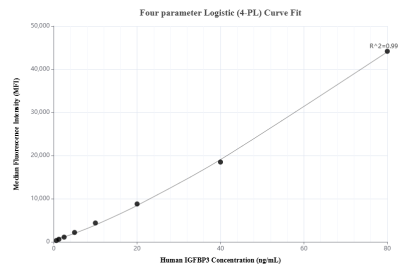
A431 were cultured in DMEM supplemented with 10% fetal bovine serum, 2.5 mM L-glutamine, 100 U/mL penicillin, and 100 µg/mL streptomycin sulfate. An aliquot of the cell culture supernate was removed, assayed for human IGFBP3, and measured 44.22 ng/mL



Serum of six individual healthy human donors was measured. The IGFBP3 concentration of detected samples was determined to be 9,505.05 ng/mL with a range of 7,790.22-10,751.16 ng/mL



Cytometric bead array standard curve of MP01352-1, IGFBP3 Recombinant Matched Antibody Pair, PBS Only. Capture antibody: 84470-2-PBS. Detection antibody: 84470-1-PBS. Standard: Eg1827. Range: 0.625-80 ng/mL



Cytometric bead array standard curve of MP01352-2, IGFBP3 Recombinant Matched Antibody Pair, PBS Only. Capture antibody: 84470-3-PBS. Detection antibody: 84470-1-PBS. Standard: Eg1827. Range: 0.625-80 ng/mL