

For Research Use Only

# Integrin alpha-5 Recombinant antibody, PBS Only

Catalog Number: 84468-5-PBS



## Basic Information

<b>Catalog Number:</b> 84468-5-PBS	<b>GenBank Accession Number:</b> BC008786	<b>Purification Method:</b> Protein A purification
<b>Size:</b> 100ug, Concentration: 1 mg/ml by Nanodrop;	<b>GeneID (NCBI):</b> 3678	<b>CloneNo.:</b> 241684E8
<b>Source:</b> Rabbit	<b>UNIPROT ID:</b> P08648	
<b>Isotype:</b> IgG	<b>Full Name:</b> integrin, alpha 5 (fibronectin receptor, alpha polypeptide)	
	<b>Calculated MW:</b> 115 kDa	
	<b>Observed MW:</b> 140 kDa	

## Applications

**Tested Applications:**  
WB, Indirect ELISA

**Species Specificity:**  
human

## Background Information

Integrins are cell adhesion receptors that are heterodimers composed of non-covalently associated alpha and beta subunits. Integrin alpha 5 (ITGA5), belongs to the integrin alpha chain family, primarily binds to Integrin beta 1 (ITGB1) to form an  $\alpha 5\beta 1$  heterodimer (PMID: 33711961). Integrin  $\alpha 5\beta 1$  is a specific receptor of fibronectin through its arginine-glycine-aspartic acid (RGD) binding site (PMID: 19608542). Integrin  $\alpha 5\beta 1$  plays roles in cell adhesion, migration and matrix formation, and has emerged as an essential mediator in many human carcinomas (PMID: 33408483).

## Storage

**Storage:**  
Store at -80°C.

**Storage Buffer:**  
PBS Only

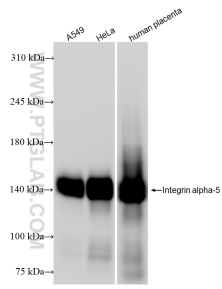
For technical support and original validation data for this product please contact:

T: 1 (888) 4PTGLAB (1-888-478-4522) (toll free  
in USA), or 1(312) 455-8498 (outside USA)

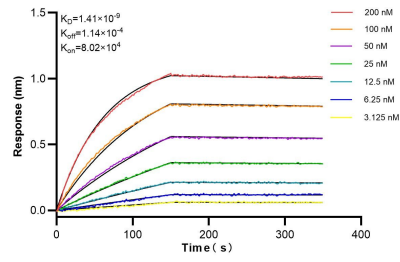
E: [proteintech@ptglab.com](mailto:proteintech@ptglab.com)  
W: [ptglab.com](http://ptglab.com)

This product is exclusively available under Proteintech Group brand and is not available to purchase from any other manufacturer.

## Selected Validation Data



Various lysates were subjected to SDS PAGE followed by western blot with 84468-5-RR (Integrin alpha-5 antibody) at dilution of 1:10000 incubated at room temperature for 1.5 hours. This data was developed using the same antibody clone with 84468-5-PBS in a different storage buffer formulation.



Biolayer interferometry (BLI) kinetic assays of 84468-5-RR against Human Integrin alpha-5 were performed. The affinity constant is 1.41 nM.