

For Research Use Only

Integrin alpha-5 Recombinant antibody, PBS Only (Capture)

Catalog Number: 84468-4-PBS



Basic Information

Catalog Number: 84468-4-PBS	GenBank Accession Number: BC008786	Purification Method: Protein A purification
Size: 100ug, Concentration: 1 mg/ml by Nanodrop;	GeneID (NCBI): 3678	CloneNo.: 241685A3
Source: Rabbit	UNIPROT ID: P08648	
Isotype: IgG	Full Name: integrin, alpha 5 (fibronectin receptor, alpha polypeptide)	
	Calculated MW: 115 kDa	
	Observed MW: 140 kDa	

Applications

Tested Applications:
WB, IF/ICC, Cytometric bead array, Indirect ELISA

Species Specificity:
human, mouse

Product Information

84468-4-PBS targets Integrin alpha-5 as part of a matched antibody pair:

MP01350-2: 84468-4-PBS capture and 84468-2-PBS detection (validated in Cytometric bead array)

Unconjugated rabbit recombinant monoclonal antibody in PBS only (BSA and azide free) storage buffer at a concentration of 1 mg/mL, ready for conjugation. Created using Proteintech's proprietary in-house recombinant technology. Recombinant production enables unrivalled batch-to-batch consistency, easy scale-up, and future security of supply.

This conjugation ready format makes antibodies ideal for use in many applications including: ELISAs, multiplex assays requiring matched pairs, mass cytometry, and multiplex imaging applications. Antibody use should be optimized by the end user for each application and assay.

Background Information

Integrins are cell adhesion receptors that are heterodimers composed of non-covalently associated alpha and beta subunits. Integrin alpha 5 (ITGA5), belongs to the integrin alpha chain family, primarily binds to Integrin beta 1 (ITGB1) to form an $\alpha 5\beta 1$ heterodimer (PMID: 33711961). Integrin $\alpha 5\beta 1$ is a specific receptor of fibronectin through its arginine-glycine-aspartic acid (RGD) binding site (PMID: 19608542). Integrin $\alpha 5\beta 1$ plays roles in cell adhesion, migration and matrix formation, and has emerged as an essential mediator in many human carcinomas (PMID: 33408483).

Storage

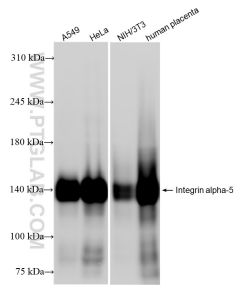
Storage:
Store at -80°C.

Storage Buffer:
PBS Only

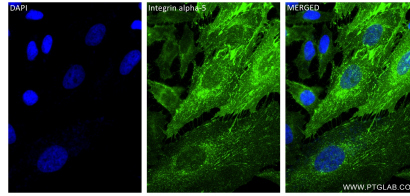
For technical support and original validation data for this product please contact:
T: 1 (888) 4PTGLAB (1-888-478-4522) (toll free in USA), or 1(312) 455-8498 (outside USA)
E: proteintech@ptglab.com
W: ptglab.com

This product is exclusively available under Proteintech Group brand and is not available to purchase from any other manufacturer.

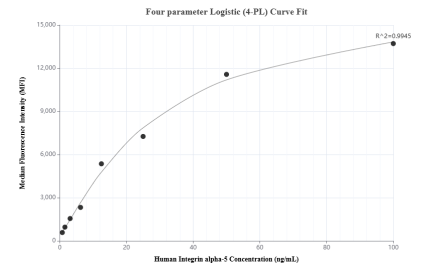
Selected Validation Data



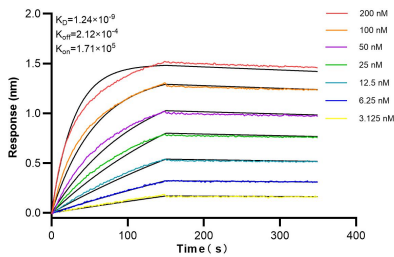
Various lysates were subjected to SDS PAGE followed by western blot with 84468-4-RR (Integrin alpha-5 antibody) at dilution of 1:5000 incubated at room temperature for 1.5 hours. This data was developed using the same antibody clone with 84468-4-PBS in a different storage buffer formulation.



Immunofluorescent analysis of (4% PFA) fixed HeLa cells using Integrin alpha-5 antibody (84468-4-RR, Clone: 241685A3) at dilution of 1:400 and CoraLite® 488-Conjugated Goat Anti-Rabbit IgG(H+L) (SA00013-2). This data was developed using the same antibody clone with 84468-4-PBS in a different storage buffer formulation.



Cytometric bead array standard curve of MP01350-2, Integrin alpha-5 Recombinant Matched Antibody Pair, PBS Only. Capture antibody: 84468-4-PBS. Detection antibody: 84468-2-PBS. Standard: RP00012. Range: 0.781-100 ng/mL.



Biolayer interferometry (BLI) kinetic assays of 84468-4-RR against Human Integrin alpha-5 were performed. The affinity constant is 1.24 nM.