

For Research Use Only

CD100 Recombinant antibody, PBS Only (Detector)

Catalog Number: 84465-6-PBS



Basic Information

Catalog Number: 84465-6-PBS	GenBank Accession Number: BC054500	Purification Method: Protein A purification
Size: 100ug , Concentration: 1 mg/ml by Nanodrop;	GeneID (NCBI): 10507	CloneNo.: 241708F11
Source: Rabbit	UNIPROT ID: Q92854	
Isotype: IgG	Full Name: sema domain, immunoglobulin domain (Ig), transmembrane domain (TM) and short cytoplasmic domain, (semaphorin) 4D	
	Calculated MW: 96 kDa	

Applications

Tested Applications:
Sandwich ELISA, Indirect ELISA, Sample test

Species Specificity:
human

Product Information

84465-6-PBS targets CD100 as part of a matched antibody pair:

MP01337-3: 84465-3-PBS capture and 84465-6-PBS detection (validated in Sandwich ELISA)

Unconjugated rabbit recombinant monoclonal antibody in PBS only (BSA and azide free) storage buffer at a concentration of 1 mg/mL, ready for conjugation. Created using Proteintech's proprietary in-house recombinant technology. Recombinant production enables unrivalled batch-to-batch consistency, easy scale-up, and future security of supply.

This conjugation ready format makes antibodies ideal for use in many applications including: ELISAs, multiplex assays requiring matched pairs, mass cytometry, and multiplex imaging applications. Antibody use should be optimized by the end user for each application and assay.

Storage

Storage:
Store at -80°C.

Storage Buffer:
PBS Only

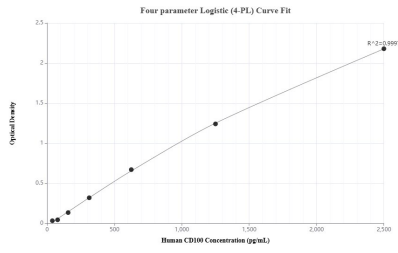
For technical support and original validation data for this product please contact:

T: 1 (888) 4PTGLAB (1-888-478-4522) (toll free in USA), or 1(312) 455-8498 (outside USA)

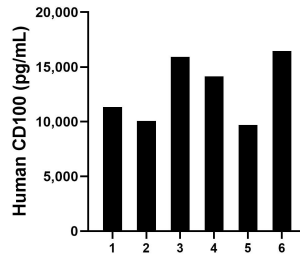
E: proteintech@ptglab.com
W: ptglab.com

This product is exclusively available under Proteintech Group brand and is not available to purchase from any other manufacturer.

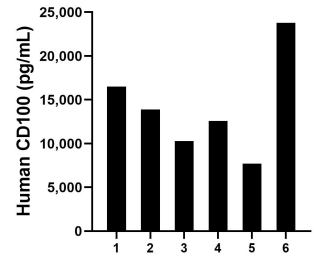
Selected Validation Data



Sandwich ELISA standard curve of MP01337-3, Human CD100 Recombinant Matched Antibody Pair - PBS only. 84465-3-PBS was coated to a plate as the capture antibody and incubated with serial dilutions of standard RPO2354. 84465-6-PBS was HRP conjugated as the detection antibody. Range: 39.1-2500 pg/mL



Plasma of six individual healthy human donors was measured. The human CD100 concentration of detected samples was determined to be 12,939.0 pg/mL with a range of 9,708.2 - 16,458.0 pg/mL.



Serum of six individual healthy human donors was measured. The human CD100 concentration of detected samples was determined to be 14,122.6 pg/mL with a range of 7,698.6 - 23,788.0 pg/mL.