

For Research Use Only

# CD100 Recombinant antibody, PBS Only (Capture/Detector)

Catalog Number: 84465-3-PBS



## Basic Information

**Catalog Number:**

84465-3-PBS

**Size:**

100ug, Concentration: 1 mg/ml by Nanodrop;

**Source:**

Rabbit

**Isotype:**

IgG

**GenBank Accession Number:**

BC054500

**GeneID (NCBI):**

10507

**UNIPROT ID:**

Q92854

**Full Name:**

sema domain, immunoglobulin domain (Ig), transmembrane domain (TM) and short cytoplasmic domain, (semaphorin) 4D

**Calculated MW:**

96 kDa

**Purification Method:**

Protein A purification

**CloneNo.:**

241709D5

## Applications

**Tested Applications:**

Cytometric bead array, Sandwich ELISA, Indirect ELISA, Sample test

**Species Specificity:**

human

## Product Information

84465-3-PBS targets CD100 as part of a matched antibody pair:

MP01337-1: 84465-1-PBS capture and 84465-3-PBS detection (validated in Cytometric bead array)

MP01337-2: 84465-2-PBS capture and 84465-3-PBS detection (validated in Cytometric bead array)

MP01337-3: 84465-3-PBS capture and 84465-6-PBS detection (validated in Sandwich ELISA)

Unconjugated rabbit recombinant monoclonal antibody in PBS only (BSA and azide free) storage buffer at a concentration of 1 mg/mL, ready for conjugation. Created using Proteintech's proprietary in-house recombinant technology. Recombinant production enables unrivalled batch-to-batch consistency, easy scale-up, and future security of supply.

This conjugation ready format makes antibodies ideal for use in many applications including: ELISAs, multiplex assays requiring matched pairs, mass cytometry, and multiplex imaging applications. Antibody use should be optimized by the end user for each application and assay.

## Storage

**Storage:**

Store at -80°C.

**Storage Buffer:**

PBS Only

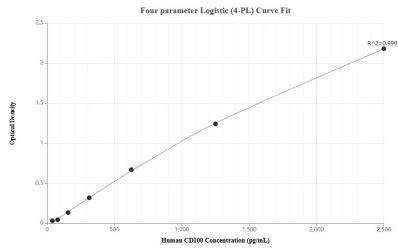
For technical support and original validation data for this product please contact:

T: 1 (888) 4PTGLAB (1-888-478-4522) (toll free in USA), or 1(312) 455-8498 (outside USA)

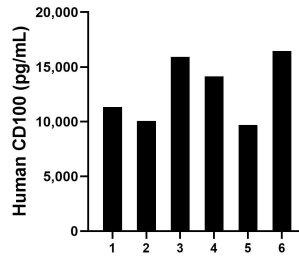
E: [proteintech@ptglab.com](mailto:proteintech@ptglab.com)  
W: [ptglab.com](http://ptglab.com)

**This product is exclusively available under Proteintech Group brand and is not available to purchase from any other manufacturer.**

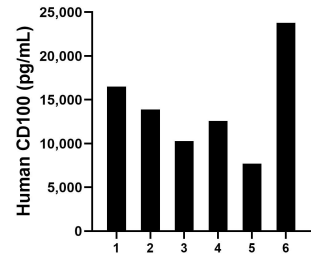
## Selected Validation Data



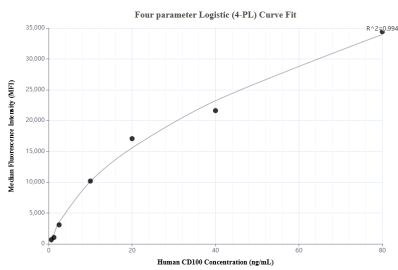
Sandwich ELISA standard curve of MP01337-3, Human CD100 Recombinant Matched Antibody Pair - PBS only. 84465-3-PBS was coated to a plate as the capture antibody and incubated with serial dilutions of standard RPO2354. 84465-6-PBS was HRP conjugated as the detection antibody. Range: 39.1-2500 pg/mL



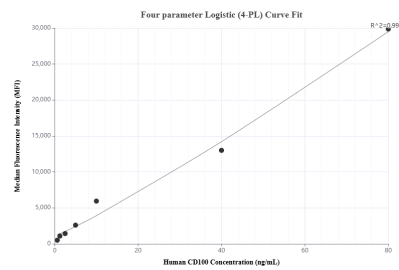
Plasma of six individual healthy human donors was measured. The human CD100 concentration of detected samples was determined to be 12,939.0 pg/mL with a range of 9,708.2 - 16,458.0 pg/mL



Serum of six individual healthy human donors was measured. The human CD100 concentration of detected samples was determined to be 14,122.6 pg/mL with a range of 7,698.6 - 23,788.0 pg/mL



Cytometric bead array standard curve of MP01337-1, CD100 Recombinant Matched Antibody Pair, PBS Only. Capture antibody: 84465-1-PBS. Detection antibody: 84465-3-PBS. Standard: RPO2354. Range: 0.625-80 ng/mL



Cytometric bead array standard curve of MP01337-2, CD100 Recombinant Matched Antibody Pair, PBS Only. Capture antibody: 84465-2-PBS. Detection antibody: 84465-3-PBS. Standard: RPO2354. Range: 0.625-80 ng/mL