

For Research Use Only

Integrin alpha 6 Recombinant antibody

Catalog Number: 84463-3-RR



Basic Information

Catalog Number: 84463-3-RR	GenBank Accession Number: BC136456	Purification Method: Protein A purification
Size: 100ul , Concentration: 1000 µg/ml by Nanodrop;	GeneID (NCBI): 3655	CloneNo.: 241703B5
Source: Rabbit	UNIPROT ID: P23229	Recommended Dilutions: WB 1:1000-1:4000 IF/ICC 1:200-1:800
Isotype: IgG	Full Name: integrin, alpha 6	
	Calculated MW: 1073 aa, 119 kDa	
	Observed MW: 120 kDa	

Applications

Tested Applications: WB, IF/ICC, ELISA	Positive Controls: WB : A431 cells, HeLa cells
Species Specificity: human	IF/ICC : A431 cells,

Storage

Storage:
Store at -20°C. Stable for one year after shipment.
Storage Buffer:
PBS with 0.02% sodium azide and 50% glycerol pH 7.3.
Aliquoting is unnecessary for -20°C storage

*** 20ul sizes contain 0.1% BSA

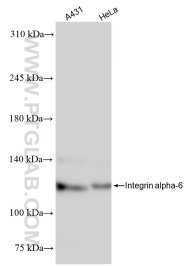
For technical support and original validation data for this product please contact:

T: 1 (888) 4PTGLAB (1-888-478-4522) (toll free in USA), or 1(312) 455-8498 (outside USA)

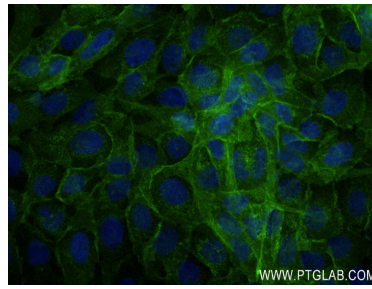
E: proteintech@ptglab.com
W: ptglab.com

This product is exclusively available under Proteintech Group brand and is not available to purchase from any other manufacturer.

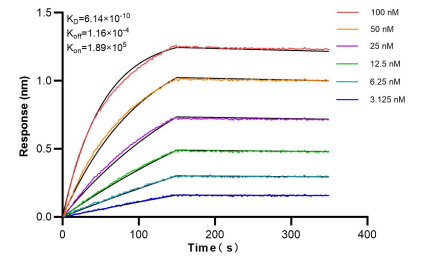
Selected Validation Data



Various lysates were subjected to SDS PAGE followed by western blot with 84463-3-RR (Integrin alpha 6 antibody) at dilution of 1:2000 incubated at room temperature for 1.5 hours.



Immunofluorescent analysis of (4% PFA) fixed A431 cells using Integrin alpha-6 antibody (84463-3-RR, Clone: 241703B5) at dilution of 1:400 and CoraLite®488-Conjugated Goat Anti-Mouse IgG(H+L) (SA00013-1).



Biolayer interferometry (BLI) kinetic assays of 84463-3-RR against Human Integrin alpha 6 were performed. The affinity constant is 0.614 nM.