

For Research Use Only

# Integrin alpha 6 Recombinant antibody, PBS Only

Catalog Number: 84463-3-PBS



## Basic Information

Catalog Number:

84463-3-PBS

Size:

100ug, Concentration: 1 mg/ml by  
Nanodrop;

Source:

Rabbit

Isotype:

IgG

GenBank Accession Number:

BC136456

GeneID (NCBI):

3655

UNIPROT ID:

P23229

Full Name:

integrin, alpha 6

Calculated MW:

1073 aa, 119 kDa

Observed MW:

120 kDa

Purification Method:

Protein A purification

CloneNo.:

241703B5

## Applications

Tested Applications:

WB, IF/ICC, Indirect ELISA

Species Specificity:

human

## Storage

Storage:

Store at -80°C.

Storage Buffer:

PBS Only

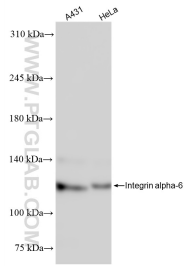
For technical support and original validation data for this product please contact:

T: 1 (888) 4PTGLAB (1-888-478-4522) (toll free  
in USA), or 1(312) 455-8498 (outside USA)

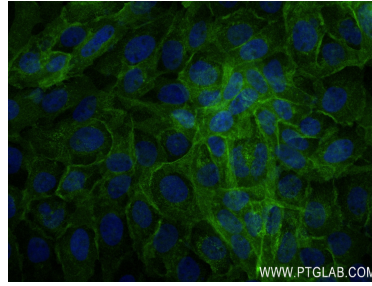
E: [proteintech@ptglab.com](mailto:proteintech@ptglab.com)  
W: [ptglab.com](http://ptglab.com)

This product is exclusively available under Proteintech Group brand and is not available to purchase from any other manufacturer.

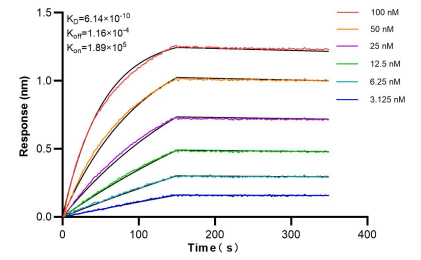
## Selected Validation Data



Various lysates were subjected to SDS PAGE followed by western blot with 84463-3-RR (Integrin alpha 6 antibody) at dilution of 1:2000 incubated at room temperature for 1.5 hours. This data was developed using the same antibody clone with 84463-3-PBS in a different storage buffer formulation.



Immunofluorescent analysis of (4% PFA) fixed A431 cells using Integrin alpha-6 antibody (84463-3-RR, Clone: 241703B5) at dilution of 1:400 and CoraLite@488-Conjugated Goat Anti-Mouse IgG(H+L) (SA00013-1). This data was developed using the same antibody clone with 84463-3-PBS in a different storage buffer formulation.



Bi-layer interferometry (BLI) kinetic assays of 84463-3-RR against Human Integrin alpha 6 were performed. The affinity constant is 0.614 nM.