

For Research Use Only

Integrin alpha 6 Recombinant antibody

Catalog Number: 84463-2-RR



Basic Information

Catalog Number: 84463-2-RR	GenBank Accession Number: BC136456	Purification Method: Protein A purification
Size: 100ul , Concentration: 1000 µg/ml by Nanodrop;	GeneID (NCBI): 3655	CloneNo.: 241703E3
Source: Rabbit	UNIPROT ID: P23229	Recommended Dilutions: IF/ICC 1:200-1:800
Isotype: IgG	Full Name: integrin, alpha 6	
	Calculated MW: 1073 aa, 119 kDa	

Applications

Tested Applications: IF/ICC, ELISA	Positive Controls: IF/ICC : A431 cells,
Species Specificity: human	

Storage

Storage:
Store at -20°C. Stable for one year after shipment.
Storage Buffer:
PBS with 0.02% sodium azide and 50% glycerol pH 7.3.
Aliquoting is unnecessary for -20°C storage

*** 20ul sizes contain 0.1% BSA

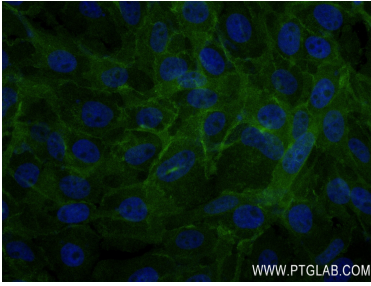
For technical support and original validation data for this product please contact:

T: 1 (888) 4PTGLAB (1-888-478-4522) (toll free
in USA), or 1(312) 455-8498 (outside USA)

E: proteintech@ptglab.com
W: ptglab.com

This product is exclusively available under Proteintech Group brand and is not available to purchase from any other manufacturer.

Selected Validation Data



Immunofluorescent analysis of (4% PFA) fixed A431 cells using Integrin alpha-6 antibody (84463-2-RR, Clone: 241703E3) at dilution of 1:400 and CoraLite®488-Conjugated Goat Anti-Rabbit IgG(H+L) (SA00013-2).