

For Research Use Only

PKM2-specific Recombinant antibody, PBS Only

Catalog Number: 84451-1-PBS



Basic Information

Catalog Number: 84451-1-PBS	GenBank Accession Number: NM_002654	Purification Method: Protein A purification
Size: 100ug, Concentration: 1 mg/ml by Nanodrop;	GeneID (NCBI): 5315	CloneNo.: 241431E8
Source: Rabbit	UNIPROT ID: P14618	
Isotype: IgG	Full Name: PKM pyruvate kinase, muscle	
	Calculated MW: 58 kDa	
	Observed MW: 58 kDa	

Applications

Tested Applications:
WB, IHC, IF/ICC, FC (Intra), Indirect ELISA

Species Specificity:
human

Background Information

PKM, also named as OIP3, PK2, PK3, PKM, p58, THBP1, CTHBP and Tumor M2-PK, belongs to the pyruvate kinase family. It is glycolytic enzyme that catalyzes the transfer of a phosphoryl group from phosphoenolpyruvate (PEP) to ADP, generating ATP. It stimulates POU5F1-mediated transcriptional activation. PKM plays a general role in caspase independent cell death of tumor cells. PKM has 2 isoforms named as PKM1/M2. The activity of the M2 isoform (but not the M1 isoform) can be inhibited by tyrosine kinase signalling in tumour cells. The primary pyruvate kinase isoform before tumour development is PK-M1; however, the primary isoform from four independent tumours is PK-M2 (PMID:18337823). The immunogen of this antibody is M2 isoform and this antibody is specific to PKM2 isoform.

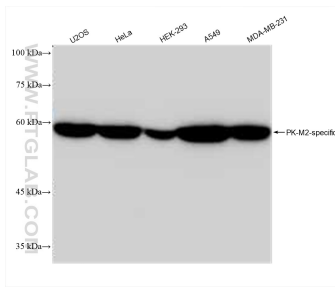
Storage

Storage:
Store at -80°C.
Storage Buffer:
PBS Only

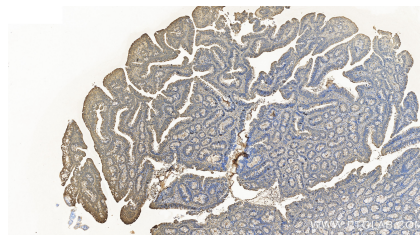
For technical support and original validation data for this product please contact:
T: 1 (888) 4PTGLAB (1-888-478-4522) (toll free in USA), or 1(312) 455-8498 (outside USA)
E: proteintech@ptglab.com
W: ptglab.com

This product is exclusively available under Proteintech Group brand and is not available to purchase from any other manufacturer.

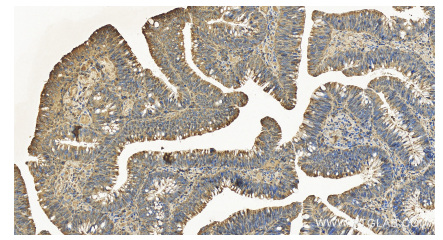
Selected Validation Data



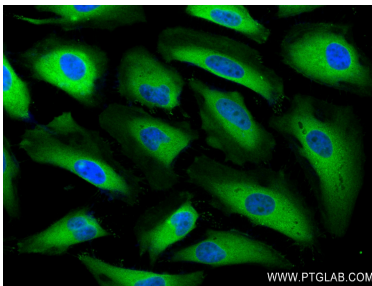
Various lysates were subjected to SDS PAGE followed by western blot with 84451-1-RR (PK-M2-specific antibody) at dilution of 1:10000 incubated at room temperature for 1.5 hours. This data was developed using the same antibody clone with 84451-1-PBS in a different storage buffer formulation.



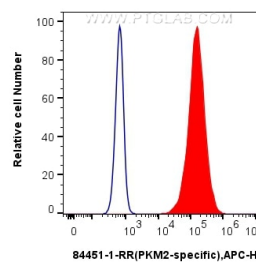
Immunohistochemical analysis of paraffin-embedded human colon cancer tissue slide using 84451-1-RR (PKM2-specific antibody) at dilution of 1:500 (under 10x lens). Heat mediated antigen retrieval with Tris-EDTA buffer (pH 9.0). This data was developed using the same antibody clone with 84451-1-PBS in a different storage buffer formulation.



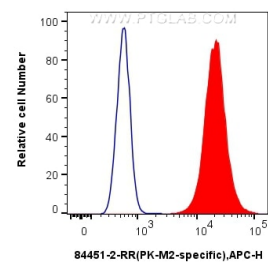
Immunohistochemical analysis of paraffin-embedded human colon cancer tissue slide using 84451-1-RR (PKM2-specific antibody) at dilution of 1:500 (under 40x lens). Heat mediated antigen retrieval with Tris-EDTA buffer (pH 9.0). This data was developed using the same antibody clone with 84451-1-PBS in a different storage buffer formulation.



Immunofluorescent analysis of (4% PFA) fixed HeLa cells using PKM2-specific antibody (84451-1-RR, Clone: 241431E8) at dilution of 1:250 and CoraLite@488-Conjugated Goat Anti-Rabbit IgG(H+L) (SA00013-2). This data was developed using the same antibody clone with 84451-1-PBS in a different storage buffer formulation.



1×10^6 HeLa cells were intracellularly stained with 0.25 ug PKM2-specific Recombinant antibody (84451-1-RR, Clone:241431E8) and APC-Conjugated Goat Anti-Rabbit IgG(H+L)(red), or 0.25 ug Isotype Control (blue). Cells were fixed with 4% PFA and permeabilized with Flow Cytometry Perm Buffer (PF00011-C). This data was developed using the same antibody clone with 84451-1-PBS in a different storage buffer formulation.



1×10^6 HepG2 cells were intracellularly stained with 0.25 ug PKM2-specific Recombinant antibody (84451-1-RR, Clone:241431E8) and APC-Conjugated Goat Anti-Rabbit IgG(H+L)(red), or 0.25 ug Isotype Control (blue). Cells were fixed with 4% PFA and permeabilized with Flow Cytometry Perm Buffer (PF00011-C). This data was developed using the same antibody clone with 84451-1-PBS in a different storage buffer formulation.