

M-cadherin Recombinant antibody

Catalog Number: 84440-5-RR

Basic Information

Catalog Number: 84440-5-RR	GenBank Accession Number: BC008951	Purification Method: Protein A purification
Size: 100ul , Concentration: 1000 µg/ml by Nanodrop;	GeneID (NCBI): 1013	CloneNo.: 241837C10
Source: Rabbit	UNIPROT ID: P55291	Recommended Dilutions: WB: 1:500-1:2000 IHC: 1:250-1:1000 IF-P: 1:200-1:800 IF/ICC: 1:200-1:800
Isotype: IgG	Full Name: cadherin 15, type 1, M-cadherin (myotubule)	
Immunogen Catalog Number: AG25763	Calculated MW: 89 kDa	
	Observed MW: 90-130 kDa	

Applications

Tested Applications: WB, IHC, IF/ICC, IF-P, ELISA	Positive Controls:
Species Specificity: human, mouse	WB : mouse cerebellum tissue,
Note-IHC: suggested antigen retrieval with TE buffer pH 9.0; (*) Alternatively, antigen retrieval may be performed with citrate buffer pH 6.0	IHC : mouse skeletal muscle tissue,
	IF-P : mouse skeletal muscle tissue,
	IF/ICC : C2C12 cells, H9C2 cells

Background Information

Cadherins are a family of transmembrane glycoproteins that mediate calcium-dependent cell-cell adhesion and play an important role in the maintenance of normal tissue architecture. M-cadherin (muscle cadherin), also known as CDH15 (cadherin-15), is a 124-kDa type I transmembrane glycoprotein that is highly expressed in developing skeletal muscle, satellite cells, and cerebellum (PMID: 9545347; 12052883). It associates with β -catenin and functions as a cell-cell adhesion molecule in a homophilic and specific manner (PMID: 9545347). M-cadherin is part of the myogenic program and may provide a trigger for terminal muscle differentiation (PMID: 1840697).

Storage

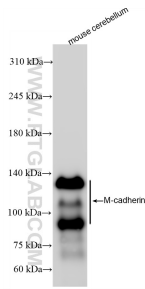
Storage:
Store at -20°C. Stable for one year after shipment.
Storage Buffer:
PBS with 0.02% sodium azide and 50% glycerol, pH7.3
Aliquoting is unnecessary for -20°C storage

*** 20ul sizes contain 0.1% BSA

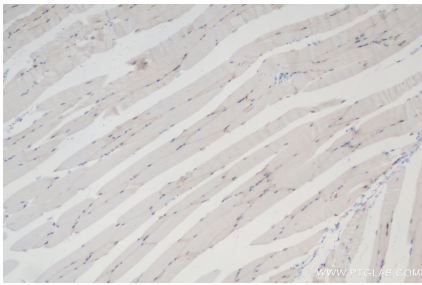
For technical support and original validation data for this product please contact:
T: 1 (888) 4PTGLAB (1-888-478-4522) (toll free in USA), or 1(312) 455-8498 (outside USA)
E: proteintech@ptglab.com
W: ptglab.com

This product is exclusively available under Proteintech Group brand and is not available to purchase from any other manufacturer.

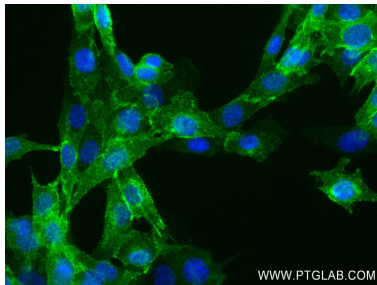
Selected Validation Data



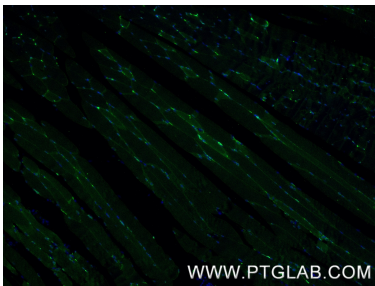
mouse cerebellum tissue was subjected to SDS PAGE followed by western blot with 84440-5-RR (CDH15 antibody) at dilution of 1:1000 incubated at room temperature for 1.5 hours.



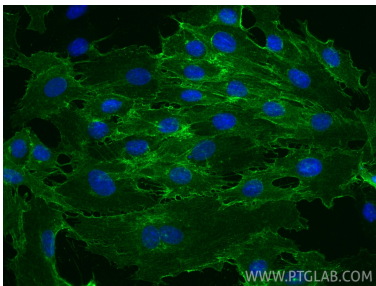
Immunohistochemical analysis of paraffin-embedded mouse skeletal muscle tissue slide using 84440-5-RR (M-cadherin antibody) at dilution of 1:500 (under 10x lens). Heat mediated antigen retrieval with Tris-EDTA buffer (pH 9.0).



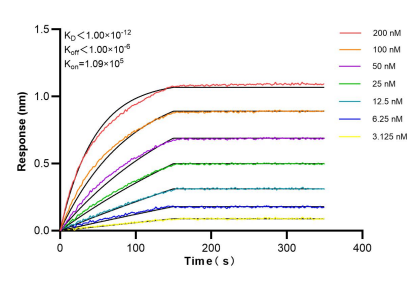
Immunofluorescent analysis of (4% PFA) fixed C2C12 cells using CDH15 antibody (84440-5-RR, Clone: 241837C10) at dilution of 1:400 and CoraLite®488-Conjugated Goat Anti-Rabbit IgG(H+L) (SA00013-2).



Immunofluorescent analysis of (4% PFA) fixed paraffin-embedded mouse skeletal muscle tissue using M-cadherin antibody (84440-5-RR, Clone: 241837C10) at dilution of 1:400 and CoraLite®488-Conjugated Goat Anti-Rabbit IgG(H+L) (SA00013-2). Heat mediated antigen retrieval with Tris-EDTA buffer (pH 9.0).



Immunofluorescent analysis of (-20°C Ethanol) fixed H9C2 cells using M-cadherin antibody (84440-5-RR, Clone: 241837C10) at dilution of 1:400 and CoraLite®488-Conjugated Goat Anti-Rabbit IgG(H+L) (SA00013-2).



Bi-layer interferometry (BLI) kinetic assays of 84440-5-RR against Human M-cadherin were performed. The affinity constant is below 1 pM.