

For Research Use Only

# DDR1 Recombinant antibody, PBS Only (Detector)

Catalog Number: 84438-3-PBS



## Basic Information

<b>Catalog Number:</b> 84438-3-PBS	<b>GenBank Accession Number:</b> NM_001297654.2	<b>Purification Method:</b> Protein A purification
<b>Size:</b> 100ug, Concentration: 1 mg/ml by Nanodrop;	<b>GeneID (NCBI):</b> 780	<b>CloneNo.:</b> 241796G1
<b>Source:</b> Rabbit	<b>UNIPROT ID:</b> Q08345-1	
<b>Isotype:</b> IgG	<b>Full Name:</b> discoidin domain receptor tyrosine kinase 1	
	<b>Calculated MW:</b> 101kDa	

## Applications

**Tested Applications:**  
Cytometric bead array, Sandwich ELISA, Indirect ELISA, Sample test

**Species Specificity:**  
human

## Product Information

84438-3-PBS targets DDR1 as part of a matched antibody pair:

MP01290-1: 84438-2-PBS capture and 84438-3-PBS detection (validated in Cytometric bead array)

MP01290-3: 84438-4-PBS capture and 84438-3-PBS detection (validated in Cytometric bead array)

MP01290-4: 84438-5-PBS capture and 84438-3-PBS detection (validated in Sandwich ELISA)

Unconjugated rabbit recombinant monoclonal antibody in PBS only (BSA and azide free) storage buffer at a concentration of 1 mg/mL, ready for conjugation. Created using Proteintech's proprietary in-house recombinant technology. Recombinant production enables unrivalled batch-to-batch consistency, easy scale-up, and future security of supply.

This conjugation ready format makes antibodies ideal for use in many applications including: ELISAs, multiplex assays requiring matched pairs, mass cytometry, and multiplex imaging applications. Antibody use should be optimized by the end user for each application and assay.

## Storage

**Storage:**  
Store at -80°C.

**Storage Buffer:**  
PBS Only

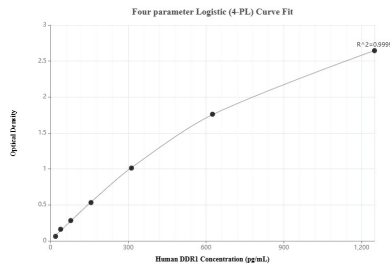
For technical support and original validation data for this product please contact:

T: 1 (888) 4PTGLAB (1-888-478-4522) (toll free in USA), or 1(312) 455-8498 (outside USA)

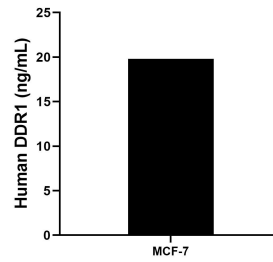
E: [proteintech@ptglab.com](mailto:proteintech@ptglab.com)  
W: [ptglab.com](http://ptglab.com)

**This product is exclusively available under Proteintech Group brand and is not available to purchase from any other manufacturer.**

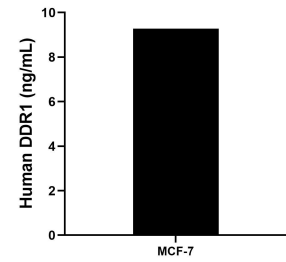
## Selected Validation Data



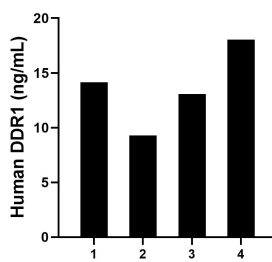
Sandwich ELISA standard curve of MP01290-4, Human DDR1 Recombinant Matched Antibody Pair - PBS only. 84438-5-PBS was coated to a plate as the capture antibody and incubated with serial dilutions of standard Eg1675. 84438-3-PBS was HRP conjugated as the detection antibody. Range: 19.5-1250 pg/mL



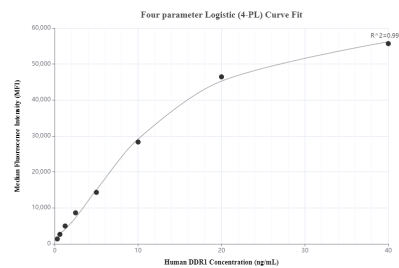
MCF-7 human breast cancer cells ( $5 \times 10^6$  cells/mL) were cultured in DMEM supplemented with 10% fetal bovine serum, 4 mM L-glutamine, 4500mg/L glucose, 100 U/mL penicillin, and 100 µg/mL streptomycin sulfate. An aliquot of the cell culture supernate was removed, assayed for human DDR1, and measured 19.81 ng/mL



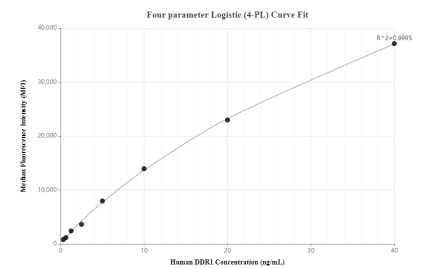
The mean DDR1 concentration was determined to be 9.28 ng/mL in MCF-7 cell extract based on a 1.2 mg/mL extract load.



Serum of four individual healthy human donors was measured. The human DDR1 concentration of detected samples was determined to be 13.63 ng/mL with a range of 9.29 - 18.03 ng/mL



Cytometric bead array standard curve of MP01290-1, DDR1 Recombinant Matched Antibody Pair, PBS Only. Capture antibody: 84438-2-PBS. Detection antibody: 84438-3-PBS. Standard: Eg1675. Range: 0.313-40 ng/mL



Cytometric bead array standard curve of MP01290-3, DDR1 Recombinant Matched Antibody Pair, PBS Only. Capture antibody: 84438-4-PBS. Detection antibody: 84438-3-PBS. Standard: Eg1675. Range: 0.313-40 ng/mL