

For Research Use Only

# TSLP Recombinant antibody, PBS Only (Capture/Detector)

Catalog Number: 84437-5-PBS



## Basic Information

Catalog Number:

84437-5-PBS

Size:

100ug, Concentration: 1 mg/ml by  
Nanodrop;

Source:

Rabbit

Isotype:

IgG

GenBank Accession Number:

NM\_033035.5

GeneID (NCBI):

85480

UNIPROT ID:

Q969D9-1

Full Name:

thymic stromal Lymphopoietin

Calculated MW:

18 kDa

Purification Method:

Protein A purification

CloneNo.:

241821F10

## Applications

Tested Applications:

Cytometric bead array, Sandwich ELISA, Indirect ELISA,  
Sample test

Species Specificity:

human

## Product Information

84437-5-PBS targets TSLP as part of a matched antibody pair:

MP01287-3: 84437-5-PBS capture and 84437-1-PBS detection (validated in Cytometric bead array)

MP01287-4: 84437-6-PBS capture and 84437-5-PBS detection (validated in Sandwich ELISA)

Unconjugated rabbit recombinant monoclonal antibody in PBS only (BSA and azide free) storage buffer at a concentration of 1 mg/mL, ready for conjugation. Created using Proteintech's proprietary in-house recombinant technology. Recombinant production enables unrivalled batch-to-batch consistency, easy scale-up, and future security of supply.

This conjugation ready format makes antibodies ideal for use in many applications including: ELISAs, multiplex assays requiring matched pairs, mass cytometry, and multiplex imaging applications. Antibody use should be optimized by the end user for each application and assay.

## Storage

Storage:

Store at -80°C.

Storage Buffer:

PBS Only

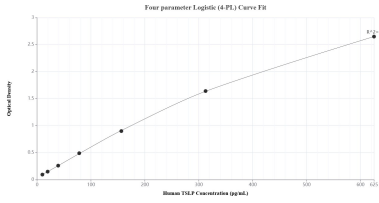
For technical support and original validation data for this product please contact:

T: 1 (888) 4PTGLAB (1-888-478-4522) (toll free  
in USA), or 1(312) 455-8498 (outside USA)

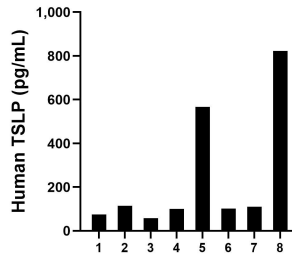
E: [proteintech@ptglab.com](mailto:proteintech@ptglab.com)  
W: [ptglab.com](http://ptglab.com)

**This product is exclusively available under Proteintech Group brand and is not available to purchase from any other manufacturer.**

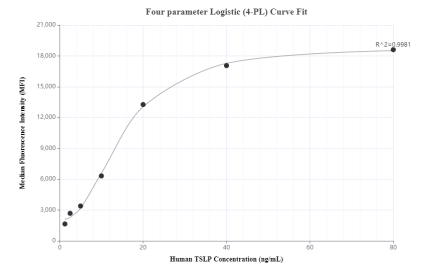
## Selected Validation Data



Sandwich ELISA standard curve of MP01287-4, Human TSLP Recombinant Matched Antibody Pair - PBS only. 84437-6-PBS was coated to a plate as the capture antibody and incubated with serial dilutions of standard Eg1238. 84437-5-PBS was HRP conjugated as the detection antibody. Range: 9.77-625 pg/mL



Serum of eight individual healthy human donors was measured. The TSLP concentration of detected samples was determined to be 243.3 pg/mL with a range of 57.6-822.5 pg/mL.



Cytometric bead array standard curve of MP01287-3, TSLP Recombinant Matched Antibody Pair, PBS Only. Capture antibody: 84437-5-PBS. Detection antibody: 84437-1-PBS. Standard: Eg1238. Range: 1.25-80 ng/mL