

For Research Use Only

# ATG9A Recombinant antibody, PBS Only (Detector)

Catalog Number: 84433-2-PBS



## Basic Information

<b>Catalog Number:</b> 84433-2-PBS	<b>GenBank Accession Number:</b> BC065534	<b>Purification Method:</b> Protein A purification
<b>Size:</b> 100ug, Concentration: 1 mg/ml by Nanodrop;	<b>GeneID (NCBI):</b> 79065	<b>CloneNo.:</b> 241652F9
<b>Source:</b> Rabbit	<b>UNIPROT ID:</b> Q7Z3C6	
<b>Isotype:</b> IgG	<b>Full Name:</b> ATG9 autophagy related 9 homolog A (S. cerevisiae)	
<b>Immunogen Catalog Number:</b> AG24212	<b>Calculated MW:</b> 837 aa, 94 kDa	

## Applications

**Tested Applications:**  
Cytometric bead array, Sandwich ELISA, Indirect ELISA, Sample test

**Species Specificity:**  
human

## Product Information

84433-2-PBS targets ATG9A as part of a matched antibody pair.

MP01278-1: 84433-1-PBS capture and 84433-2-PBS detection (validated in Cytometric bead array, Sandwich ELISA)

Unconjugated rabbit recombinant monoclonal antibody in PBS only (BSA and azide free) storage buffer at a concentration of 1 mg/mL, ready for conjugation. Created using Proteintech's proprietary in-house recombinant technology. Recombinant production enables unrivalled batch-to-batch consistency, easy scale-up, and future security of supply.

This conjugation ready format makes antibodies ideal for use in many applications including: ELISAs, multiplex assays requiring matched pairs, mass cytometry, and multiplex imaging applications. Antibody use should be optimized by the end user for each application and assay.

## Storage

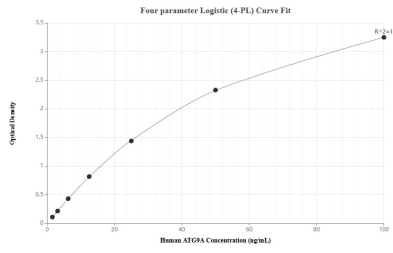
**Storage:**  
Store at -80°C.

**Storage Buffer:**  
PBS Only

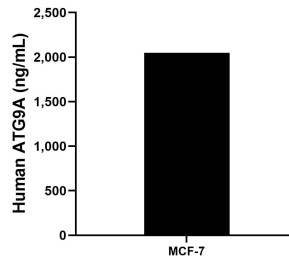
For technical support and original validation data for this product please contact:  
T: 1 (888) 4PTGLAB (1-888-478-4522) (toll free in USA), or 1(312) 455-8498 (outside USA)      E: [proteintech@ptglab.com](mailto:proteintech@ptglab.com)  
W: [ptglab.com](http://ptglab.com)

**This product is exclusively available under Proteintech Group brand and is not available to purchase from any other manufacturer.**

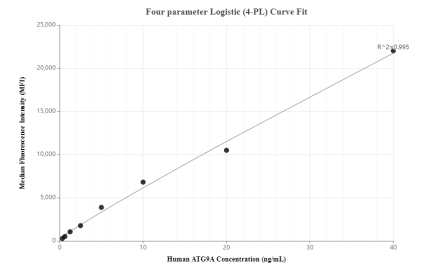
## Selected Validation Data



Sandwich ELISA standard curve of MP01278-1, Human ATG9A Recombinant Matched Antibody Pair - PBS only. 84433-1-PBS was coated to a plate as the capture antibody and incubated with serial dilutions of standard Ag24212. 84433-2-PBS was HRP conjugated as the detection antibody. Range: 1.56-100 ng/mL



The mean ATG9A concentration was determined to be 2,049.94 ng/mL in MCF-7 cell extract based on a 1.2 mg/mL extract load.



Cytometric bead array standard curve of MP01278-1, ATG9A Recombinant Matched Antibody Pair, PBS Only. Capture antibody: 84433-1-PBS. Detection antibody: 84433-2-PBS. Standard: Ag24212. Range: 0.313-40 ng/mL