

For Research Use Only

# Mouse Ki-67 Recombinant antibody, PBS Only (Detector)

Catalog Number: 84432-1-PBS



## Basic Information

<b>Catalog Number:</b> 84432-1-PBS	<b>GenBank Accession Number:</b> NM_001081117.2	<b>Purification Method:</b> Protein A purification
<b>Size:</b> 100ug , Concentration: 1 mg/ml by Nanodrop;	<b>GeneID (NCBI):</b> 17345	<b>CloneNo.:</b> 241768E2
<b>Source:</b> Rabbit	<b>UNIPROT ID:</b> E9PVX6-1	
<b>Isotype:</b> IgG	<b>Full Name:</b> antigen identified by monoclonal antibody Ki 67	
	<b>Calculated MW:</b> 351kDa	
	<b>Observed MW:</b> 350 kDa	

## Applications

**Tested Applications:**  
WB, IHC, IF/ICC, Cytometric bead array, Indirect ELISA

**Species Specificity:**  
mouse, rat

## Product Information

84432-1-PBS targets Ki-67 as part of a matched antibody pair:

MP01277-1: 84432-2-PBS capture and 84432-1-PBS detection (validated in Cytometric bead array)

Unconjugated rabbit recombinant monoclonal antibody in PBS only (BSA and azide free) storage buffer at a concentration of 1 mg/mL, ready for conjugation. Created using Proteintech's proprietary in-house recombinant technology. Recombinant production enables unrivalled batch-to-batch consistency, easy scale-up, and future security of supply.

This conjugation ready format makes antibodies ideal for use in many applications including: ELISAs, multiplex assays requiring matched pairs, mass cytometry, and multiplex imaging applications. Antibody use should be optimized by the end user for each application and assay.

## Background Information

The Ki-67 protein (also known as MKI67) is a cellular marker for proliferation. Ki67 is present during all active phases of the cell cycle (G1, S, G2 and M), but is absent in resting cells (G0). Cellular content of Ki-67 protein markedly increases during cell progression through S phase of the cell cycle. Therefore, the nuclear expression of Ki67 can be evaluated to assess tumor proliferation by immunohistochemistry.

## Storage

**Storage:**  
Store at -80°C.

**Storage Buffer:**  
PBS Only

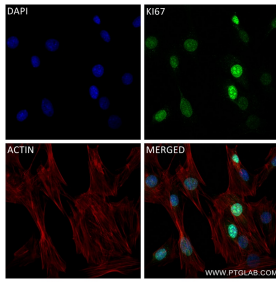
For technical support and original validation data for this product please contact:

T: 1 (888) 4PTGLAB (1-888-478-4522) (toll free  
in USA), or 1(312) 455-8498 (outside USA)

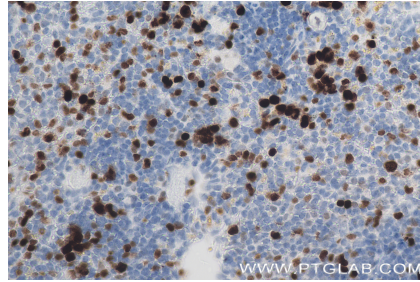
E: [proteintech@ptglab.com](mailto:proteintech@ptglab.com)  
W: [ptglab.com](http://ptglab.com)

**This product is exclusively available under Proteintech Group brand and is not available to purchase from any other manufacturer.**

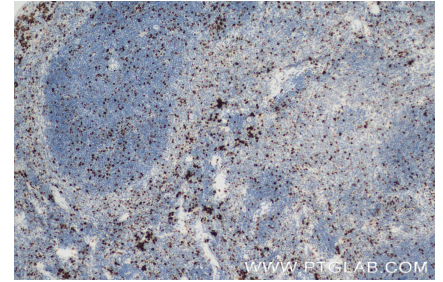
## Selected Validation Data



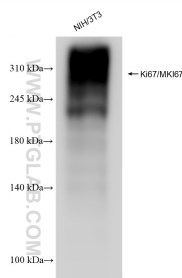
Immunofluorescent analysis of (4% PFA) fixed C2C12 cells using Ki-67 antibody (84432-1-RR, Clone: 241768E2 ) at dilution of 1:400 and CoraLite®488-Conjugated Goat Anti-Rabbit IgG(H+L) (SA00013-2), CL594-Phalloidin (red). This data was developed using the same antibody clone with 84432-1-PBS in a different storage buffer formulation.



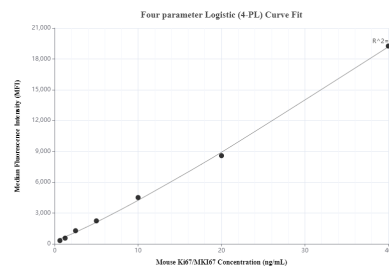
Immunohistochemical analysis of paraffin-embedded mouse spleen tissue slide using 84432-1-RR (Ki-67 antibody) at dilution of 1:200 (under 40x lens). Heat mediated antigen retrieval with Tris-EDTA buffer (pH 9.0). This data was developed using the same antibody clone with 84432-1-PBS in a different storage buffer formulation.



Immunohistochemical analysis of paraffin-embedded mouse spleen tissue slide using 84432-1-RR (Ki-67 antibody) at dilution of 1:200 (under 10x lens). Heat mediated antigen retrieval with Tris-EDTA buffer (pH 9.0). This data was developed using the same antibody clone with 84432-1-PBS in a different storage buffer formulation.



NIH/3T3 cells were subjected to SDS PAGE followed by western blot with 84432-1-RR (Ki67/MKI67 antibody) at dilution of 1:3000 incubated at room temperature for 1.5 hours. This data was developed using the same antibody clone with 84432-1-PBS in a different storage buffer formulation.



Cytometric bead array standard curve of MP01277-1, MOUSE Ki-67 Recombinant Matched Antibody Pair, PBS Only. Capture antibody: 84432-2-PBS. Detection antibody: 84432-1-PBS. Standard: Eg1548. Range: 0.625-40 ng/mL.