

For Research Use Only

Neuropilin 1 Recombinant antibody, PBS Only (Capture/Detector)

Catalog Number: 84429-4-PBS



Basic Information

Catalog Number: 84429-4-PBS	GenBank Accession Number: BC007533	Purification Method: Protein A purification
Size: 100ug , Concentration: 1 mg/ml by Nanodrop;	GeneID (NCBI): 8829	CloneNo.: 241812E11
Source: Rabbit	UNIPROT ID: O14786	
Isotype: IgG	Full Name: neuropilin 1	

Applications

Tested Applications:
Cytometric bead array, Sandwich ELISA, Indirect ELISA,
Sample test

Species Specificity:
human

Product Information

84429-4-PBS targets Neuropilin 1 as part of a matched antibody pair:

MP01310-1: 84429-4-PBS capture and 84429-3-PBS detection (validated in Cytometric bead array)

MP01310-4: 84429-2-PBS capture and 84429-4-PBS detection (validated in Sandwich ELISA)

Unconjugated rabbit recombinant monoclonal antibody in PBS only (BSA and azide free) storage buffer at a concentration of 1 mg/mL, ready for conjugation. Created using Proteintech's proprietary in-house recombinant technology. Recombinant production enables unrivalled batch-to-batch consistency, easy scale-up, and future security of supply.

This conjugation ready format makes antibodies ideal for use in many applications including: ELISAs, multiplex assays requiring matched pairs, mass cytometry, and multiplex imaging applications. Antibody use should be optimized by the end user for each application and assay.

Storage

Storage:
Store at -80°C.
Storage Buffer:
PBS Only

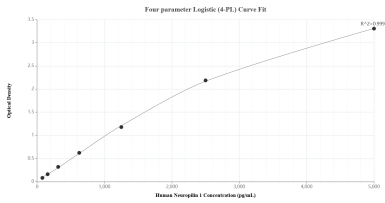
For technical support and original validation data for this product please contact:

T: 1 (888) 4PTGLAB (1-888-478-4522) (toll free
in USA), or 1(312) 455-8498 (outside USA)

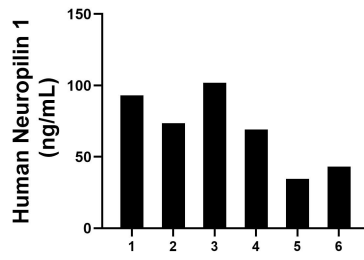
E: proteintech@ptglab.com
W: ptglab.com

This product is exclusively available under Proteintech Group brand and is not available to purchase from any other manufacturer.

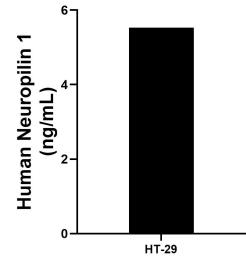
Selected Validation Data



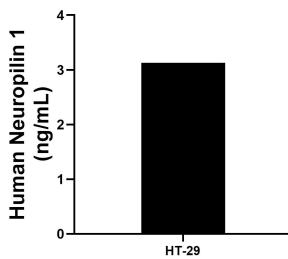
Sandwich ELISA standard curve of MP01310-4, Human Neuropilin 1 Recombinant Matched Antibody Pair - PBS only. 84429-2-PBS was coated to a plate as the capture antibody and incubated with serial dilutions of standard Eg2331. 84429-4-PBS was HRP conjugated as the detection antibody. Range: 78.1-5000 pg/mL



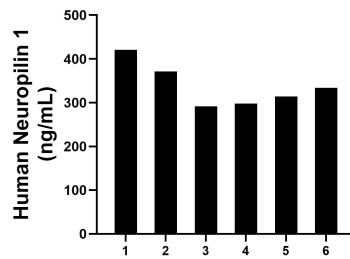
Human milk of six individual healthy human donors was measured. The Neuropilin 1 concentration of detected samples was determined to be 69.2 ng/mL with a range of 34.6-102.0 ng/mL



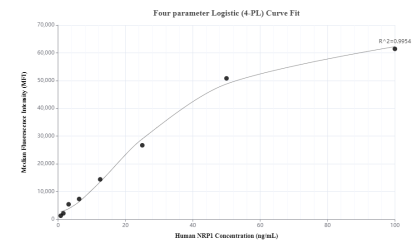
The mean Neuropilin 1 concentration was determined to be 5.5 ng/mL in HT-29 cell extract based on a 1.5 mg/mL extract load.



HT-29 were cultured in DMEM supplemented with 10% fetal bovine serum, 2.5 mM L-glutamine, 100 U/mL penicillin, and 100 µg/mL streptomycin sulfate. An aliquot of the cell culture supernate was removed, assayed for human Neuropilin 1, and measured 3.1 ng/mL



Serum of six individual healthy human donors was measured. The Neuropilin 1 concentration of detected samples was determined to be 338.2 ng/mL with a range of 291.5-420.8 ng/mL



Cytometric bead array standard curve of MP01310-1, Neuropilin 1 Recombinant Matched Antibody Pair, PBS Only. Capture antibody: 84429-4-PBS. Detection antibody: 84429-3-PBS. Standard: Eg2331. Range: 0.781-100 ng/mL