

For Research Use Only

# BCMA/TNFRSF17 Recombinant antibody, PBS Only (Detector)

Catalog Number: 84419-1-PBS



## Basic Information

<b>Catalog Number:</b> 84419-1-PBS	<b>GenBank Accession Number:</b> BC058291	<b>Purification Method:</b> Protein A purification
<b>Size:</b> 100ug, Concentration: 1 mg/ml by Nanodrop;	<b>GeneID (NCBI):</b> 608	<b>CloneNo.:</b> 241731A3
<b>Source:</b> Rabbit	<b>UNIPROT ID:</b> Q02223	
<b>Isotype:</b> IgG	<b>Full Name:</b> tumor necrosis factor receptor superfamily, member 17	
	<b>Calculated MW:</b> 184 aa, 20 kDa	

## Applications

**Tested Applications:**  
Cytometric bead array, Sandwich ELISA, Indirect ELISA, Sample test

**Species Specificity:**  
human

## Product Information

84419-1-PBS targets BCMA/TNFRSF17 as part of a matched antibody pair:

MP01305-2: 84419-5-PBS capture and 84419-1-PBS detection (validated in Cytometric bead array)

MP01305-3: 84419-3-PBS capture and 84419-1-PBS detection (validated in Cytometric bead array)

MP01305-4: 84419-6-PBS capture and 84419-1-PBS detection (validated in Sandwich ELISA)

Unconjugated rabbit recombinant monoclonal antibody in PBS only (BSA and azide free) storage buffer at a concentration of 1 mg/mL, ready for conjugation. Created using Proteintech's proprietary in-house recombinant technology. Recombinant production enables unrivalled batch-to-batch consistency, easy scale-up, and future security of supply.

This conjugation ready format makes antibodies ideal for use in many applications including: ELISAs, multiplex assays requiring matched pairs, mass cytometry, and multiplex imaging applications. Antibody use should be optimized by the end user for each application and assay.

## Storage

**Storage:**  
Store at -80°C.  
**Storage Buffer:**  
PBS Only

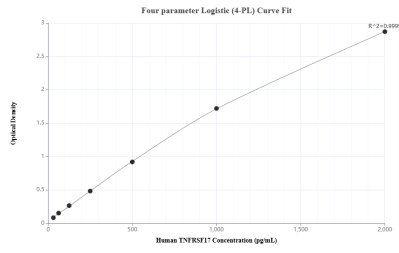
For technical support and original validation data for this product please contact:

T: 1 (888) 4PTGLAB (1-888-478-4522) (toll free in USA), or 1(312) 455-8498 (outside USA)

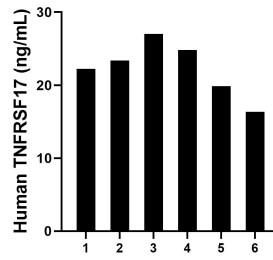
E: [proteintech@ptglab.com](mailto:proteintech@ptglab.com)  
W: [ptglab.com](http://ptglab.com)

**This product is exclusively available under Proteintech Group brand and is not available to purchase from any other manufacturer.**

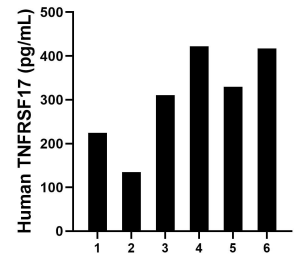
## Selected Validation Data



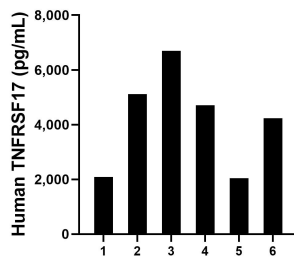
Sandwich ELISA standard curve of MP01305-4, Human TNFRSF17 Recombinant Matched Antibody Pair - PBS only. 84419-6-PBS was coated to a plate as the capture antibody and incubated with serial dilutions of standard Eg1812. 84419-1-PBS was HRP conjugated as the detection antibody. Range: 31.3-2000 pg/mL



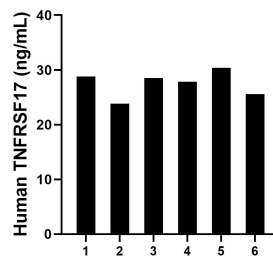
Plasma of six individual healthy human donors was measured. The human TNFRSF17 concentration of detected samples was determined to be 22.27 ng/mL with a range of 16.36 - 27.02 ng/mL



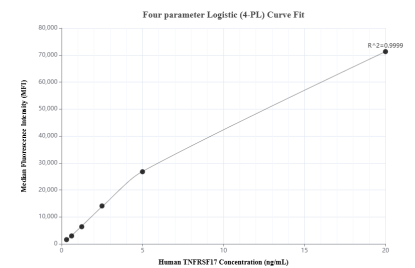
Saliva of six individual healthy human donors was measured. The human TNFRSF17 concentration of detected samples was determined to be 306.6 pg/mL with a range of 134.5 - 422.1 pg/mL



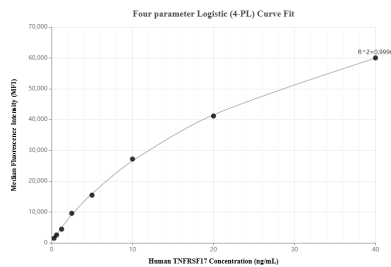
Urine of six individual healthy human donors was measured. The human TNFRSF17 concentration of detected samples was determined to be 4,148.4 pg/mL with a range of 2,044.1 - 6,691.8 pg/mL



Serum of six individual healthy human donors was measured. The human TNFRSF17 concentration of detected samples was determined to be 27.48 ng/mL with a range of 23.83 - 30.35 ng/mL



Cytometric bead array standard curve of MP01305-2, TNFRSF17 Recombinant Matched Antibody Pair, PBS Only. Capture antibody: 84419-5-PBS. Detection antibody: 84419-1-PBS. Standard: Eg1812. Range: 0.313-20 ng/mL



Cytometric bead array standard curve of MP01305-3, TNFRSF17 Recombinant Matched Antibody Pair, PBS Only. Capture antibody: 84419-3-PBS. Detection antibody: 84419-1-PBS. Standard: Eg1812. Range: 0.313-40 ng/mL