

For Research Use Only

Rat NKp46/NCR1 Recombinant antibody, PBS Only

Catalog Number: 84416-5-PBS



Basic Information

Catalog Number:

84416-5-PBS

Size:

100ug, Concentration: 1 mg/ml by Nanodrop;

Source:

Rabbit

Isotype:

IgG

GenBank Accession Number:

NM_057199.1

GeneID (NCBI):

117547

UNIPROT ID:

Q9Z0H5

Full Name:

natural cytotoxicity triggering receptor 1

Calculated MW:

37kDa

Observed MW:

50-60 kDa

Purification Method:

Protein A purification

CloneNo.:

241811H7

Applications

Tested Applications:

WB, IHC, Indirect ELISA

Species Specificity:

mouse, rat

Background Information

NKp46, also known as NCR1 or CD335, is an Ig-like superfamily cell surface receptor that is highly conserved in mammals (PMID: 22021440). NKp46 is a type I transmembrane glycoprotein consisting of two extracellular Ig-like domains, a transmembrane domain, and an intracellular tail (PMID: 9730896). It is expressed on NK cells, rare T-cell subsets, and a mucosal population of NKp46+ innate lymphoid cells (PMID: 9730896; 22021440). NKp46 is the major triggering receptor involved in the natural cytotoxicity (PMID: 10359120; 10092106; 15356098).

Storage

Storage:

Store at -80°C.

Storage Buffer:

PBS Only

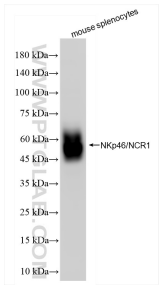
For technical support and original validation data for this product please contact:

T: 1 (888) 4PTGLAB (1-888-478-4522) (toll free in USA), or 1(312) 455-8498 (outside USA)

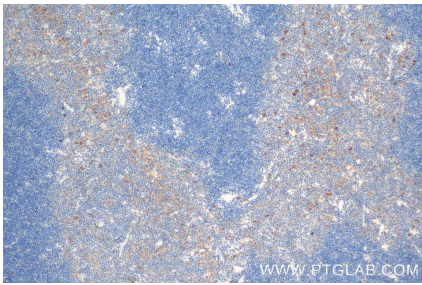
E: proteintech@ptglab.com
W: ptglab.com

This product is exclusively available under Proteintech Group brand and is not available to purchase from any other manufacturer.

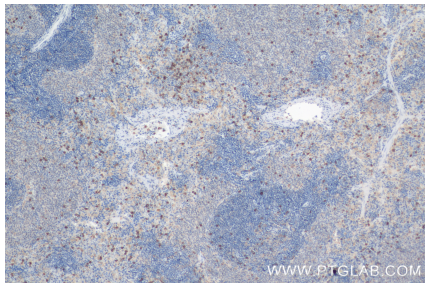
Selected Validation Data



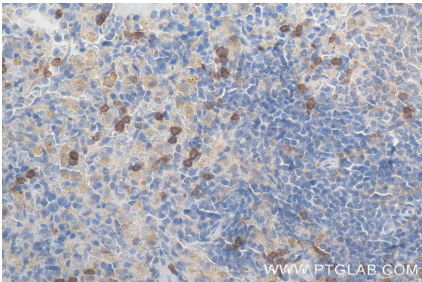
mouse splenocytes were subjected to SDS PAGE followed by western blot with 84416-5-RR (NKp46/NCR1 antibody) at dilution of 1:2000 incubated at room temperature for 1.5 hours. This data was developed using the same antibody clone with 84416-5-PBS in a different storage buffer formulation.



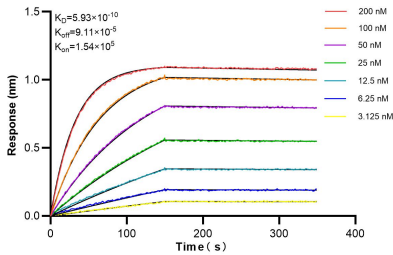
Immunohistochemical analysis of paraffin-embedded rat thymus tissue slide using 84416-5-RR (NKp46/NCR1 antibody) at dilution of 1:1000 (under 10x lens). Heat mediated antigen retrieval with Tris-EDTA buffer (pH 9.0). This data was developed using the same antibody clone with 84416-5-PBS in a different storage buffer formulation.



Immunohistochemical analysis of paraffin-embedded rat spleen tissue slide using 84416-5-RR (NKp46/NCR1 antibody) at dilution of 1:1000 (under 10x lens). Heat mediated antigen retrieval with Tris-EDTA buffer (pH 9.0). This data was developed using the same antibody clone with 84416-5-PBS in a different storage buffer formulation.



Immunohistochemical analysis of paraffin-embedded rat spleen tissue slide using 84416-5-RR (NKp46/NCR1 antibody) at dilution of 1:1000 (under 40x lens). Heat mediated antigen retrieval with Tris-EDTA buffer (pH 9.0). This data was developed using the same antibody clone with 84416-5-PBS in a different storage buffer formulation.



Biolayer interferometry (BLI) kinetic assays of 84416-5-RR against Rat NKp46/NCR1 were performed. The affinity constant is 0.593 nM.