

For Research Use Only

CCL20/MIP-3 alpha Recombinant antibody, PBS Only (Capture/Detector)

Catalog Number: 84413-3-PBS



Basic Information

Catalog Number: 84413-3-PBS	GenBank Accession Number: NM_004591.3	Purification Method: Protein A purification
Size: 100ug, Concentration: 1 mg/ml by Nanodrop;	GeneID (NCBI): 6364	CloneNo.: 241694B4
Source: Rabbit	UNIPROT ID: P78556-1	
Isotype: IgG	Full Name: chemokine (C-C motif) ligand 20	
	Calculated MW: 11kDa	
	Observed MW: 11 kDa	

Applications

Tested Applications:
WB, IHC, Cytometric bead array, Indirect ELISA

Species Specificity:
human, mouse

Product Information

84413-3-PBS targets CCL20/MIP-3 alpha as part of a matched antibody pair:

MP01301-1: 84413-1-PBS capture and 84413-3-PBS detection (validated in Cytometric bead array)

MP01301-3: 84413-3-PBS capture and 84413-2-PBS detection (validated in Cytometric bead array)

Unconjugated rabbit recombinant monoclonal antibody in PBS only (BSA and azide free) storage buffer at a concentration of 1 mg/mL, ready for conjugation. Created using Proteintech's proprietary in-house recombinant technology. Recombinant production enables unrivalled batch-to-batch consistency, easy scale-up, and future security of supply.

This conjugation ready format makes antibodies ideal for use in many applications including: ELISAs, multiplex assays requiring matched pairs, mass cytometry, and multiplex imaging applications. Antibody use should be optimized by the end user for each application and assay.

Background Information

CCL20, also known as macrophage infiltrating factor protein 3a, is a C-C chemokine that specifically binds to the receptor CCR6. CCL20 is produced in various tissues and by a wide range of immune cells, including neutrophils, natural killer cells, T-helper type 17 (Th17) cells, B cells, and various antigen-presenting cells, such as dendritic cells (DCs), Langerhans cells, and macrophages. Increased expression of CCL20 is likely involved in the increased recruitment of dendritic cells observed in fibroinflammatory diseases such as chronic obstructive pulmonary disease (COPD). CCL20 expression is increased by the proinflammatory cytokine IL-1 beta.

Storage

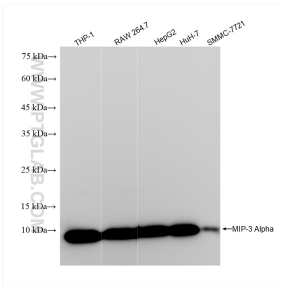
Storage:
Store at -80°C.

Storage Buffer:
PBS Only

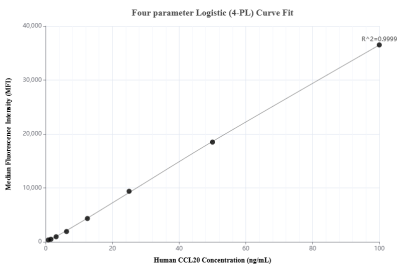
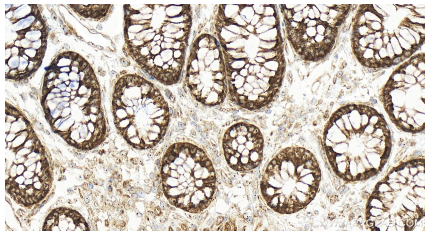
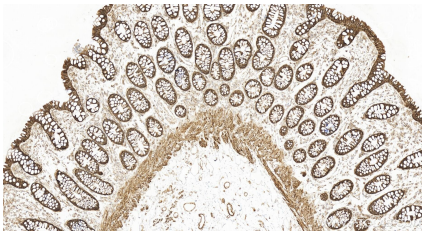
For technical support and original validation data for this product please contact:
T: 1 (888) 4PTGLAB (1-888-478-4522) (toll free in USA), or 1(312) 455-8498 (outside USA)
E: proteintech@ptglab.com
W: ptglab.com

This product is exclusively available under Proteintech Group brand and is not available to purchase from any other manufacturer.

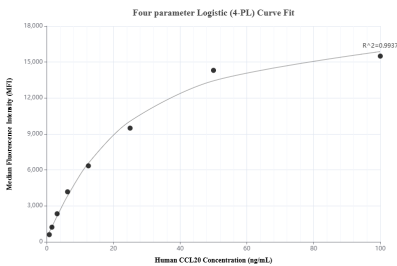
Selected Validation Data



Various lysates were subjected to SDS PAGE followed by western blot with 84413-3-RR (CCL20/MIP-3 alpha antibody) at dilution of 1:10000 incubated at room temperature for 1.5 hours. This data was developed using the same antibody clone with 84413-3-PBS in a different storage buffer formulation.



Cytometric bead array standard curve of MP01301-1, CCL20/MIP-3 alpha Recombinant Matched Antibody Pair, PBS Only. Capture antibody: 84413-1-PBS. Detection antibody: 84413-3-PBS. Standard: Eg2398. Range: 0.781-100 ng/mL.



Cytometric bead array standard curve of MP01301-3, CCL20/MIP-3 alpha Recombinant Matched Antibody Pair, PBS Only. Capture antibody: 84413-3-PBS. Detection antibody: 84413-2-PBS. Standard: Eg2398. Range: 0.781-100 ng/mL.