

For Research Use Only

CCL20/MIP-3 alpha Recombinant antibody, PBS Only (Capture)

Catalog Number: 84413-1-PBS



Basic Information

Catalog Number: 84413-1-PBS	GenBank Accession Number: NM_004591.3	Purification Method: Protein A purification
Size: 100ug , Concentration: 1 mg/ml by Nanodrop;	GeneID (NCBI): 6364	CloneNo.: 241694A5
Source: Rabbit	UNIPROT ID: P78556-1	
Isotype: IgG	Full Name: chemokine (C-C motif) ligand 20	
	Calculated MW: 11kDa	

Applications

Tested Applications:
Cytometric bead array, Sandwich ELISA, Indirect ELISA, Sample test

Species Specificity:
human

Product Information

84413-1-PBS targets CCL20/MIP-3 alpha as part of a matched antibody pair:

MP01301-1: 84413-1-PBS capture and 84413-3-PBS detection (validated in Cytometric bead array)

MP01301-2: 84413-1-PBS capture and 84413-2-PBS detection (validated in Cytometric bead array)

MP01301-4: 84413-1-PBS capture and 84413-5-PBS detection (validated in Sandwich ELISA)

Unconjugated rabbit recombinant monoclonal antibody in PBS only (BSA and azide free) storage buffer at a concentration of 1 mg/mL, ready for conjugation. Created using Proteintech's proprietary in-house recombinant technology. Recombinant production enables unrivalled batch-to-batch consistency, easy scale-up, and future security of supply.

This conjugation ready format makes antibodies ideal for use in many applications including: ELISAs, multiplex assays requiring matched pairs, mass cytometry, and multiplex imaging applications. Antibody use should be optimized by the end user for each application and assay.

Storage

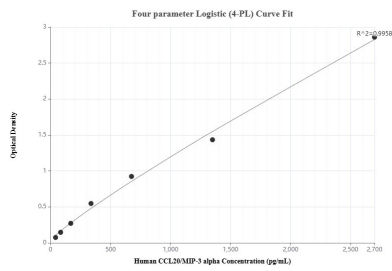
Storage:
Store at -80°C.

Storage Buffer:
PBS Only

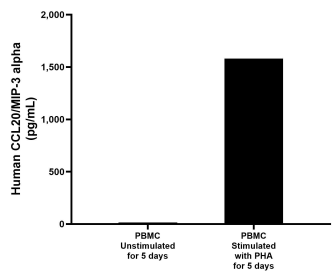
For technical support and original validation data for this product please contact:
T: 1 (888) 4PTGLAB (1-888-478-4522) (toll free in USA), or 1(312) 455-8498 (outside USA)
E: proteintech@ptglab.com
W: ptglab.com

This product is exclusively available under Proteintech Group brand and is not available to purchase from any other manufacturer.

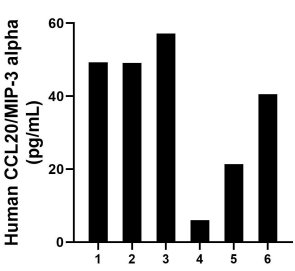
Selected Validation Data



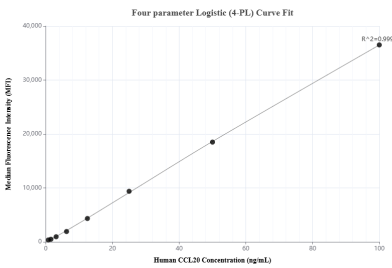
Sandwich ELISA standard curve of MP01301-4, Human CCL20/MIP-3 alpha Recombinant Matched Antibody Pair - PBS only. 84413-1-PBS was coated to a plate as the capture antibody and incubated with serial dilutions of standard Eg2398. 84413-5-PBS was HRP conjugated as the detection antibody. Range: 42.2-2700 pg/mL



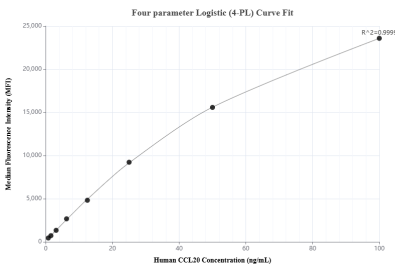
Human peripheral blood mononuclear cells (PBMC) were cultured unstimulated or stimulated with 10 µg/mL PHA for 5 days. The mean CCL20/MIP-3 alpha concentration was determined to be 14.8 pg/mL in unstimulated PBMC supernatant, 1,579.6 pg/mL in PHA stimulated PBMC supernatant.



Serum of six individual healthy human donors was measured. The human CCL20/MIP-3 alpha concentration of detected samples was determined to be 37.3 pg/mL with a range of 6.0 - 57.1 pg/mL



Cytometric bead array standard curve of MP01301-1, CCL20/MIP-3 alpha Recombinant Matched Antibody Pair, PBS Only. Capture antibody: 84413-1-PBS. Detection antibody: 84413-3-PBS. Standard: Eg2398. Range: 0.781-100 ng/mL



Cytometric bead array standard curve of MP01301-2, CCL20/MIP-3 alpha Recombinant Matched Antibody Pair, PBS Only. Capture antibody: 84413-1-PBS. Detection antibody: 84413-2-PBS. Standard: Eg2398. Range: 0.781-100 ng/mL