

For Research Use Only

# IL1A Recombinant antibody, PBS Only (Capture/Detector)

Catalog Number: 84411-3-PBS



## Basic Information

<b>Catalog Number:</b> 84411-3-PBS	<b>GenBank Accession Number:</b> BC013142	<b>Purification Method:</b> Protein A purification
<b>Size:</b> 100ug, Concentration: 1 mg/ml by Nanodrop;	<b>GeneID (NCBI):</b> 3552	<b>CloneNo.:</b> 241752F11
<b>Source:</b> Rabbit	<b>UNIPROT ID:</b> P01583	
<b>Isotype:</b> IgG	<b>Full Name:</b> interleukin 1, alpha	
<b>Immunogen Catalog Number:</b> HZ-1320	<b>Calculated MW:</b> 271 aa, 31 kDa	

## Applications

**Tested Applications:**  
Cytometric bead array, Sandwich ELISA, Indirect ELISA, Sample test

**Species Specificity:**  
human

## Product Information

84411-3-PBS targets IL1A as part of a matched antibody pair:

MP01289-2: 84411-3-PBS capture and 84411-4-PBS detection (validated in Cytometric bead array)

MP01289-3: 84411-2-PBS capture and 84411-3-PBS detection (validated in Sandwich ELISA)

Unconjugated rabbit recombinant monoclonal antibody in PBS only (BSA and azide free) storage buffer at a concentration of 1 mg/mL, ready for conjugation. Created using Proteintech's proprietary in-house recombinant technology. Recombinant production enables unrivalled batch-to-batch consistency, easy scale-up, and future security of supply.

This conjugation ready format makes antibodies ideal for use in many applications including: ELISAs, multiplex assays requiring matched pairs, mass cytometry, and multiplex imaging applications. Antibody use should be optimized by the end user for each application and assay.

## Storage

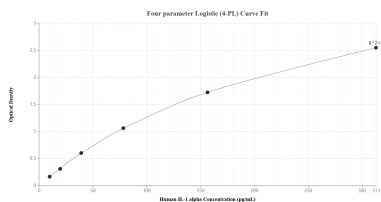
**Storage:**  
Store at -80°C.

**Storage Buffer:**  
PBS Only

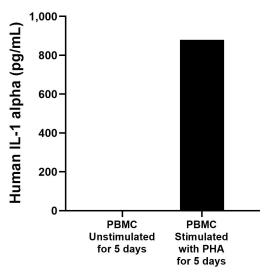
For technical support and original validation data for this product please contact:  
T: 1 (888) 4PTGLAB (1-888-478-4522) (toll free in USA), or 1(312) 455-8498 (outside USA)  
E: [proteintech@ptglab.com](mailto:proteintech@ptglab.com)  
W: [ptglab.com](http://ptglab.com)

This product is exclusively available under Proteintech Group brand and is not available to purchase from any other manufacturer.

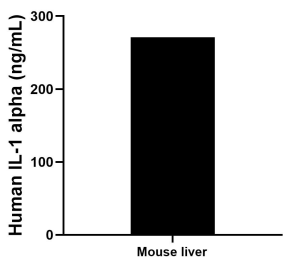
## Selected Validation Data



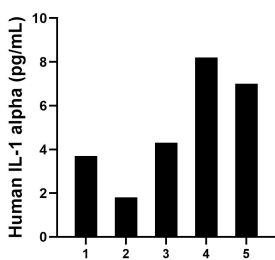
Sandwich ELISA standard curve of MP01289-3, Human IL-1 alpha Recombinant Matched Antibody Pair - PBS only. 84411-2-PBS was coated to a plate as the capture antibody and incubated with serial dilutions of standard HZ-1320. 84411-3-PBS was HRP conjugated as the detection antibody. Range: 9.77-313 pg/mL.



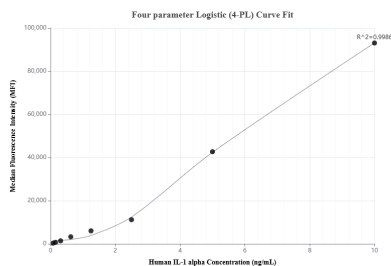
Human peripheral blood mononuclear cells (PBMC) were cultured unstimulated or stimulated with 10 µg/mL PHA for 5 days. The mean IL-1 alpha concentration was determined to be 2.1 pg/mL in unstimulated PBMC supernatant, 880.0 pg/mL in PHA stimulated PBMC supernatant.



The mean IL-1 alpha concentration was determined to be 271.0 ng/mL in mouse liver cell extract based on a 3.7 mg/mL extract load.



Serum of five individual healthy human donors was measured. The IL-1 alpha concentration of detected samples was determined to be 5.0 pg/mL with a range of 1.8-8.2 pg/mL.



Cytometric bead array standard curve of MP01289-2, IL-1 alpha Recombinant Matched Antibody Pair, PBS Only. Capture antibody: 84411-3-PBS. Detection antibody: 84411-4-PBS. Standard: HZ-1320. Range: 0.078-10 ng/mL.