

For Research Use Only

# ACE Recombinant antibody

Catalog Number: 84407-4-RR



## Basic Information

<b>Catalog Number:</b> 84407-4-RR	<b>GenBank Accession Number:</b> NM_000789.4	<b>Purification Method:</b> Protein A purification
<b>Size:</b> 100ul , Concentration: 1000 µg/ml by Nanodrop;	<b>GeneID (NCBI):</b> 1636	<b>CloneNo.:</b> 241763E3
<b>Source:</b> Rabbit	<b>UNIPROT ID:</b> P12821-1	<b>Recommended Dilutions:</b> WB 1:2000-1:10000 IHC 1:500-1:2000
<b>Isotype:</b> IgG	<b>Full Name:</b> angiotensin I converting enzyme (peptidyl-dipeptidase A) 1	
	<b>Calculated MW:</b> 150kDa	
	<b>Observed MW:</b> 170-180 kDa	

## Applications

<b>Tested Applications:</b> WB, IHC, ELISA	<b>Positive Controls:</b>
<b>Species Specificity:</b> human, mouse, rat	<b>WB :</b> mouse lung tissue, rat lung tissue
<b>Note-IHC:</b> suggested antigen retrieval with <b>TE buffer pH 9.0; (*) Alternatively, antigen retrieval may be performed with citrate buffer pH 6.0</b>	<b>IHC :</b> mouse lung tissue, rat lung tissue

## Background Information

ACE(Angiotensin-converting enzyme) is also named as DCP, DCP1 and belongs to the peptidase M2 family. It is involved in catalyzing the conversion of angiotensin I into a physiologically active peptide angiotensin II. ACE also has a glycosidase activity which releases GPI-anchored proteins from the membrane by cleaving the mannose linkage in the GPI moiety. It has 4 isoforms produced by alternative splicing. The full length protein has 15 glycosylation sites and it can show a molecular weight of 170 kDa(PMID:16804085).

## Storage

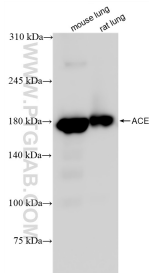
**Storage:**  
Store at -20°C. Stable for one year after shipment.  
**Storage Buffer:**  
PBS with 0.02% sodium azide and 50% glycerol pH 7.3.  
**Aliquoting is unnecessary for -20°C storage**

\*\*\* 20ul sizes contain 0.1% BSA

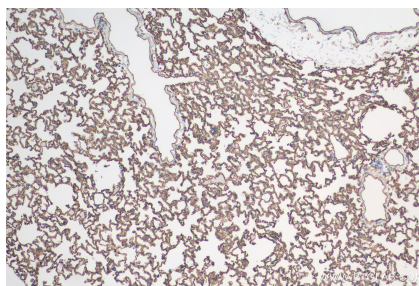
For technical support and original validation data for this product please contact:  
T: 1 (888) 4PTGLAB (1-888-478-4522) (toll free in USA), or 1(312) 455-8498 (outside USA)  
E: proteintech@ptglab.com  
W: ptglab.com

This product is exclusively available under Proteintech Group brand and is not available to purchase from any other manufacturer.

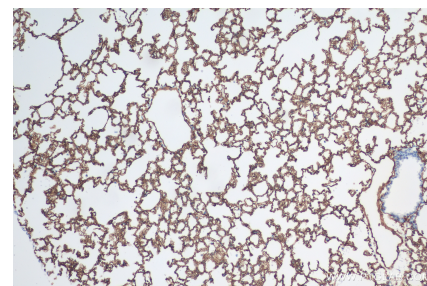
## Selected Validation Data



Various lysates were subjected to SDS PAGE followed by western blot with 84407-4-RR (ACE antibody) at dilution of 1:5000 incubated at room temperature for 1.5 hours.



Immunohistochemical analysis of paraffin-embedded rat lung tissue slide using 84407-4-RR (ACE antibody) at dilution of 1:1000 (under 10x lens). Heat mediated antigen retrieval with Tris-EDTA buffer (pH 9.0).



Immunohistochemical analysis of paraffin-embedded mouse lung tissue slide using 84407-4-RR (ACE antibody) at dilution of 1:1000 (under 10x lens). Heat mediated antigen retrieval with Tris-EDTA buffer (pH 9.0).



Immunohistochemical analysis of paraffin-embedded mouse lung tissue slide using 84407-4-RR (ACE antibody) at dilution of 1:1000 (under 40x lens). Heat mediated antigen retrieval with Tris-EDTA buffer (pH 9.0).