

For Research Use Only

CD40 Recombinant antibody, PBS Only (Detector)

Catalog Number: 84406-5-PBS



Basic Information

Catalog Number: 84406-5-PBS	GenBank Accession Number: NM_001250.6	Purification Method: Protein A purification
Size: 100ug, Concentration: 1 mg/ml by Nanodrop;	GeneID (NCBI): 958	CloneNo.: 241760F4
Source: Rabbit	ENSEMBL Gene ID: ENSG00000101017	
Isotype: IgG	UNIPROT ID: P25942-1	
	Full Name: CD40 molecule, TNF receptor superfamily member 5	
	Calculated MW: 31kDa	

Applications

Tested Applications:
Sandwich ELISA, Indirect ELISA, Sample test

Species Specificity:
human

Product Information

84406-5-PBS targets CD40 as part of a matched antibody pair:

MP01294-3: 84406-3-PBS capture and 84406-5-PBS detection (validated in Sandwich ELISA)

Unconjugated rabbit recombinant monoclonal antibody in PBS only (BSA and azide free) storage buffer at a concentration of 1 mg/mL, ready for conjugation. Created using Proteintech's proprietary in-house recombinant technology. Recombinant production enables unrivalled batch-to-batch consistency, easy scale-up, and future security of supply.

This conjugation ready format makes antibodies ideal for use in many applications including: ELISAs, multiplex assays requiring matched pairs, mass cytometry, and multiplex imaging applications. Antibody use should be optimized by the end user for each application and assay.

Storage

Storage:
Store at -80°C.

Storage Buffer:
PBS Only

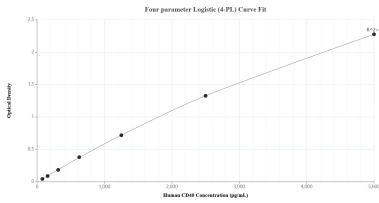
For technical support and original validation data for this product please contact:

T: 1 (888) 4PTGLAB (1-888-478-4522) (toll free in USA), or 1(312) 455-8498 (outside USA)

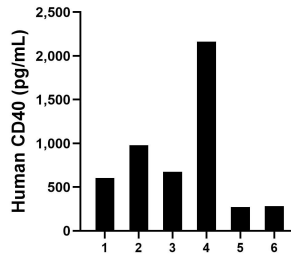
E: proteintech@ptglab.com
W: ptglab.com

This product is exclusively available under Proteintech Group brand and is not available to purchase from any other manufacturer.

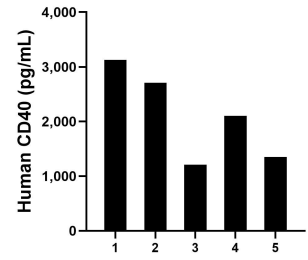
Selected Validation Data



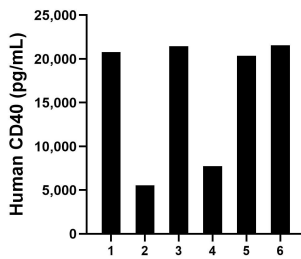
Sandwich ELISA standard curve of MP01294-3, Human CD40 Recombinant Matched Antibody Pair - PBS only. 84406-3-PBS was coated to a plate as the capture antibody and incubated with serial dilutions of standard Eg1797. 84406-5-PBS was HRP conjugated as the detection antibody. Range: 78.1-5000 pg/mL



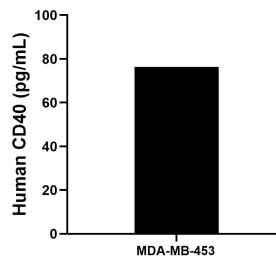
Saliva of six individual healthy human donors was measured. The CD40 concentration of detected samples was determined to be 829.1 pg/mL with a range of 270.5-2,164.5 pg/mL.



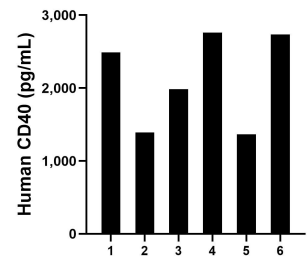
Human milk of five individual healthy human donors was measured. The CD40 concentration of detected samples was determined to be 2,099.7 pg/mL with a range of 1,212.9-3,125.0 pg/mL.



Urine of six individual healthy human donors was measured. The CD40 concentration of detected samples was determined to be 1,6246.6 pg/mL with a range of 5,532.8-21,569.7 pg/mL.



MDA-MB-453 were cultured in DMEM supplemented with 10% fetal bovine serum, 2.5 mM L-glutamine, 100 U/mL penicillin, and 100 µg/mL streptomycin sulfate. An aliquot of the cell culture supernate was removed, assayed for human CD40, and measured 76.3 pg/mL.



Serum of six individual healthy human donors was measured. The CD40 concentration of detected samples was determined to be 2,121.2 pg/mL with a range of 1,366.2-2,760.0 pg/mL.