

For Research Use Only

# CD40 Recombinant antibody, PBS Only (Capture)

Catalog Number: 84406-3-PBS



## Basic Information

<b>Catalog Number:</b> 84406-3-PBS	<b>GenBank Accession Number:</b> NM_001250.6	<b>Purification Method:</b> Protein A purification
<b>Size:</b> 100ug, Concentration: 1 mg/ml by Nanodrop;	<b>GeneID (NCBI):</b> 958	<b>CloneNo.:</b> 241760C3
<b>Source:</b> Rabbit	<b>ENSEMBL Gene ID:</b> ENSG00000101017	
<b>Isotype:</b> IgG	<b>UNIPROT ID:</b> P25942-1	
	<b>Full Name:</b> CD40 molecule, TNF receptor superfamily member 5	
	<b>Calculated MW:</b> 31kDa	

## Applications

**Tested Applications:**  
Cytometric bead array, Sandwich ELISA, Indirect ELISA,  
Sample test

**Species Specificity:**  
human

## Product Information

84406-3-PBS targets CD40 as part of a matched antibody pair:

MP01294-2: 84406-3-PBS capture and 84406-4-PBS detection (validated in Cytometric bead array)

MP01294-3: 84406-3-PBS capture and 84406-5-PBS detection (validated in Sandwich ELISA)

Unconjugated rabbit recombinant monoclonal antibody in PBS only (BSA and azide free) storage buffer at a concentration of 1 mg/mL, ready for conjugation. Created using Proteintech's proprietary in-house recombinant technology. Recombinant production enables unrivalled batch-to-batch consistency, easy scale-up, and future security of supply.

This conjugation ready format makes antibodies ideal for use in many applications including: ELISAs, multiplex assays requiring matched pairs, mass cytometry, and multiplex imaging applications. Antibody use should be optimized by the end user for each application and assay.

## Storage

**Storage:**  
Store at -80°C.

**Storage Buffer:**  
PBS Only

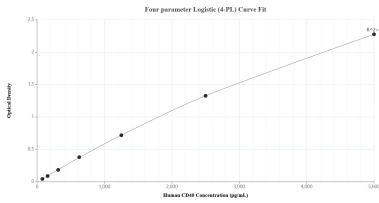
For technical support and original validation data for this product please contact:

T: 1 (888) 4PTGLAB (1-888-478-4522) (toll free  
in USA), or 1(312) 455-8498 (outside USA)

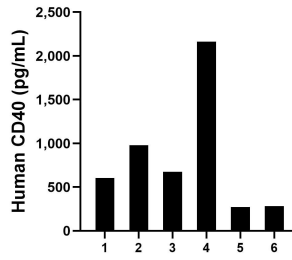
E: [proteintech@ptglab.com](mailto:proteintech@ptglab.com)  
W: [ptglab.com](http://ptglab.com)

**This product is exclusively available under Proteintech Group brand and is not available to purchase from any other manufacturer.**

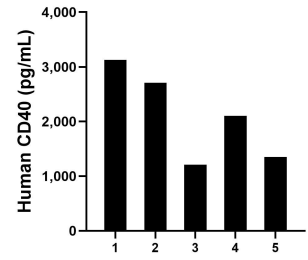
## Selected Validation Data



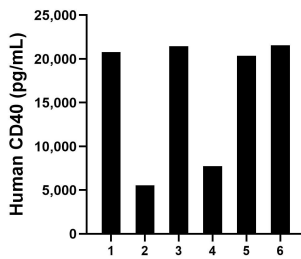
Sandwich ELISA standard curve of MP01294-3, Human CD40 Recombinant Matched Antibody Pair - PBS only. 84406-3-PBS was coated to a plate as the capture antibody and incubated with serial dilutions of standard Eg1797. 84406-5-PBS was HRP conjugated as the detection antibody. Range: 78.1-5000 pg/mL



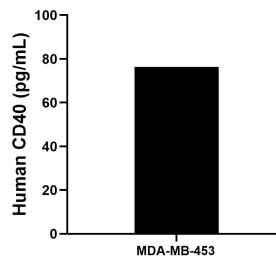
Saliva of six individual healthy human donors was measured. The CD40 concentration of detected samples was determined to be 829.1 pg/mL with a range of 270.5-2,164.5 pg/mL.



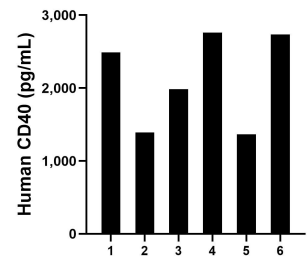
Human milk of five individual healthy human donors was measured. The CD40 concentration of detected samples was determined to be 2,099.7 pg/mL with a range of 1,212.9-3,125.0 pg/mL.



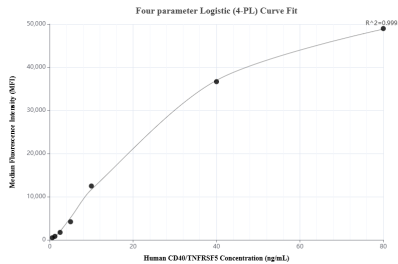
Urine of six individual healthy human donors was measured. The CD40 concentration of detected samples was determined to be 1,6246.6 pg/mL with a range of 5,532.8-21,569.7 pg/mL



MDA-MB-453 were cultured in DMEM supplemented with 10% fetal bovine serum, 2.5 mM L-glutamine, 100 U/mL penicillin, and 100 µg/mL streptomycin sulfate. An aliquot of the cell culture supernate was removed, assayed for human CD40, and measured 76.3 pg/mL.



Serum of six individual healthy human donors was measured. The CD40 concentration of detected samples was determined to be 2,121.2 pg/mL with a range of 1,366.2-2,760.0 pg/mL



Cytometric bead array standard curve of MP01294-2, CD40 Recombinant Matched Antibody Pair, PBS Only. Capture antibody: 84406-3-PBS. Detection antibody: 84406-4-PBS. Standard: Eg1797. Range: 0.625-80 ng/mL