

For Research Use Only

CD40 Recombinant antibody

Catalog Number: 84406-2-RR



Basic Information

Catalog Number: 84406-2-RR	GenBank Accession Number: NM_001250.6	Purification Method: Protein A purification
Size: 100ul , Concentration: 1000 ug/ml by Nanodrop;	GeneID (NCBI): 958	CloneNo.: 241760A11
Source: Rabbit	ENSEMBL Gene ID: ENSG00000101017	Recommended Dilutions: WB 1:1000-1:8000 IF/ICC 1:125-1:500
Isotype: IgG	UNIPROT ID: P25942-1	
	Full Name: CD40 molecule, TNF receptor superfamily member 5	
	Calculated MW: 31kDa	
	Observed MW: 45 kDa	

Applications

Tested Applications: WB, IF/ICC, ELISA	Positive Controls:
Species Specificity: human	WB : Raji cells, Daudi cells, Ramos cells IF/ICC : Raji cells,

Background Information

CD40, also named as TNFRSF5 and Bp50, is a receptor for TNFSF5/CD40LG. It is a member of the TNFR superfamily and is responsible for the efficient activation of cell-mediated and humoral immune responses via activated T cells and B cells respectively. Defects in CD40 lead to hyper-IgM immunodeficiency syndrome type 3 (HIGM3) (PMID: 11675497). This is an autosomal recessive disorder that includes the inability of B cells to undergo isotype switching, a key step in the final differentiation of the humoral immune response, and an inability to mount an antibody-specific immune response.

Storage

Storage:
Store at -20°C. Stable for one year after shipment.
Storage Buffer:
PBS with 0.02% sodium azide and 50% glycerol pH 7.3.
Aliquoting is unnecessary for -20°C storage

*** 20ul sizes contain 0.1% BSA

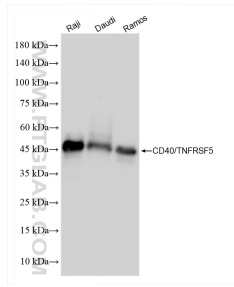
For technical support and original validation data for this product please contact:

T: 1 (888) 4PTGLAB (1-888-478-4522) (toll free
in USA), or 1(312) 455-8498 (outside USA)

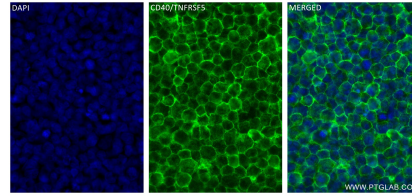
E: proteintech@ptglab.com
W: ptglab.com

This product is exclusively available under Proteintech Group brand and is not available to purchase from any other manufacturer.

Selected Validation Data



Various lysates were subjected to SDS PAGE followed by western blot with 84406-2-RR (CD40/TNFRSF5 antibody) at dilution of 1:4000 incubated at room temperature for 1.5 hours.



Immunofluorescent analysis of (4% PFA) fixed Raji cells using CD40/TNFRSF5 antibody (84406-2-RR, Clone: 241760A11) at dilution of 1:250 and CoraLite® 488-Conjugated Goat Anti-Rabbit IgG(H+L) (SA00013-2).