

For Research Use Only

CD40 Recombinant antibody, PBS Only (Detector)

Catalog Number: 84406-2-PBS



Basic Information

Catalog Number: 84406-2-PBS	GenBank Accession Number: NM_001250.6	Purification Method: Protein A purification
Size: 100ug, Concentration: 1 mg/ml by Nanodrop;	GeneID (NCBI): 958	CloneNo.: 241760A11
Source: Rabbit	ENSEMBL Gene ID: ENSG00000101017	
Isotype: IgG	UNIPROT ID: P25942-1	
	Full Name: CD40 molecule, TNF receptor superfamily member 5	
	Calculated MW: 31kDa	
	Observed MW: 45 kDa	

Applications

Tested Applications:
WB, IF/ICC, Cytometric bead array, Indirect ELISA

Species Specificity:
human

Product Information

84406-2-PBS targets CD40 as part of a matched antibody pair:

MP01294-1: 84406-1-PBS capture and 84406-2-PBS detection (validated in Cytometric bead array)

Unconjugated rabbit recombinant monoclonal antibody in PBS only (BSA and azide free) storage buffer at a concentration of 1 mg/mL, ready for conjugation. Created using Proteintech's proprietary in-house recombinant technology. Recombinant production enables unrivalled batch-to-batch consistency, easy scale-up, and future security of supply.

This conjugation ready format makes antibodies ideal for use in many applications including: ELISAs, multiplex assays requiring matched pairs, mass cytometry, and multiplex imaging applications. Antibody use should be optimized by the end user for each application and assay.

Background Information

CD40, also named as TNFRSF5 and Bp50, is a receptor for TNFSF5/CD40LG. It is a member of the TNFR superfamily and is responsible for the efficient activation of cell-mediated and humoral immune responses via activated T cells and B cells respectively. Defects in CD40 lead to hyper-IgM immunodeficiency syndrome type 3 (HIGM3) (PMID: 11675497). This is an autosomal recessive disorder that includes the inability of B cells to undergo isotype switching, a key step in the final differentiation of the humoral immune response, and an inability to mount an antibody-specific immune response.

Storage

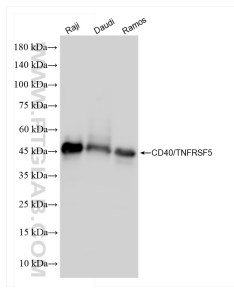
Storage:
Store at -80°C.

Storage Buffer:
PBS Only

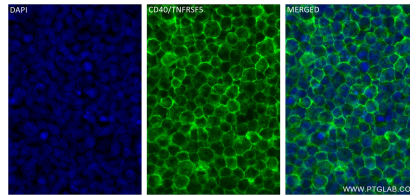
For technical support and original validation data for this product please contact:
T: 1 (888) 4PTGLAB (1-888-478-4522) (toll free in USA), or 1(312) 455-8498 (outside USA) E: proteintech@ptglab.com
W: ptglab.com

This product is exclusively available under Proteintech Group brand and is not available to purchase from any other manufacturer.

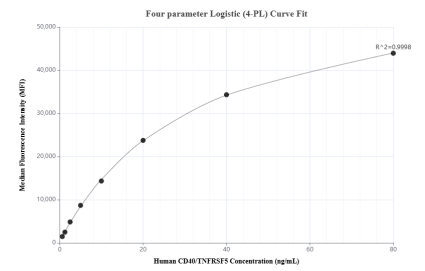
Selected Validation Data



Various lysates were subjected to SDS PAGE followed by western blot with 84406-2-RR (CD40/TNFRSF5 antibody) at dilution of 1:4000 incubated at room temperature for 1.5 hours. This data was developed using the same antibody clone with 84406-2-PBS in a different storage buffer formulation.



Immunofluorescent analysis of (4% PFA) fixed Raji cells using CD40/TNFRSF5 antibody (84406-2-RR, Clone: 241760A11) at dilution of 1:250 and CoraLite® 488-Conjugated Goat Anti-Rabbit IgG(H+L) (SA00013-2). This data was developed using the same antibody clone with 84406-2-PBS in a different storage buffer formulation.



Cytometric bead array standard curve of MP01294-1, CD40 Recombinant Matched Antibody Pair, PBS Only. Capture antibody: 84406-1-PBS. Detection antibody: 84406-2-PBS. Standard: Eg1797. Range: 0.625-80 ng/mL.