

For Research Use Only

CD45(220-577) Recombinant antibody, PBS Only (Capture)

Catalog Number: 84405-4-PBS



Basic Information

Catalog Number:

84405-4-PBS

Size:

100ug, Concentration: 1 mg/ml by
Nanodrop;

Source:

Rabbit

Isotype:

IgG

GenBank Accession Number:

GeneID (NCBI):

5788

ENSEMBL Gene ID:

ENSG0000081237

Full Name:

protein tyrosine phosphatase,
receptor type, C

Purification Method:

Protein A purification

CloneNo.:

241671G12

Applications

Tested Applications:

Cytometric bead array, Sandwich ELISA, Indirect ELISA,
Sample test

Species Specificity:

human

Product Information

84405-4-PBS targets CD45(220-577) as part of a matched antibody pair:

MP01280-1: 84405-4-PBS capture and 84405-3-PBS detection (validated in Cytometric bead array)

MP01280-3: 84405-4-PBS capture and 84405-2-PBS detection (validated in Sandwich ELISA)

Unconjugated rabbit recombinant monoclonal antibody in PBS only (BSA and azide free) storage buffer at a concentration of 1 mg/mL, ready for conjugation. Created using Proteintech's proprietary in-house recombinant technology. Recombinant production enables unrivalled batch-to-batch consistency, easy scale-up, and future security of supply.

This conjugation ready format makes antibodies ideal for use in many applications including: ELISAs, multiplex assays requiring matched pairs, mass cytometry, and multiplex imaging applications. Antibody use should be optimized by the end user for each application and assay.

Storage

Storage:

Store at -80°C.

Storage Buffer:

PBS Only

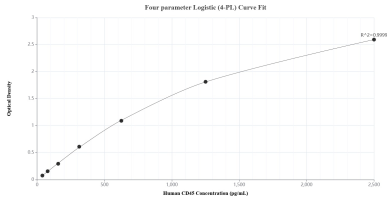
For technical support and original validation data for this product please contact:

T: 1 (888) 4PTGLAB (1-888-478-4522) (toll free
in USA), or 1(312) 455-8498 (outside USA)

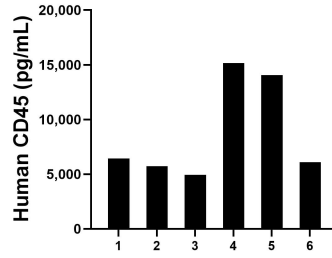
E: proteintech@ptglab.com
W: ptglab.com

This product is exclusively available under Proteintech Group brand and is not available to purchase from any other manufacturer.

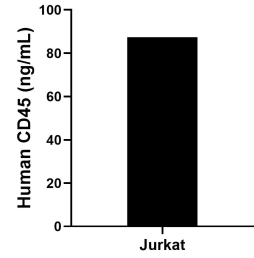
Selected Validation Data



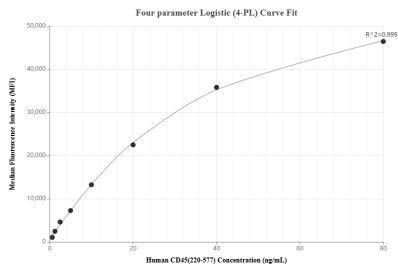
Sandwich ELISA standard curve of MP01280-3, Human CD45 Recombinant Matched Antibody Pair - PBS only. 84405-4-PBS was coated to a plate as the capture antibody and incubated with serial dilutions of standard Eg2486. 84405-2-PBS was HRP conjugated as the detection antibody. Range: 39.1-2500 pg/mL



Plasma of six individual healthy human donors was measured. The CD45 concentration of detected samples was determined to be 8,737.3 pg/mL with a range of 4,942.4 -15,153.0 pg/mL



The mean CD45 concentration was determined to be 87.3 ng/mL in Jurkat cell extract based on a 1.5 mg/mL extract load.



Cytometric bead array standard curve of MP01280-1, CD45 Recombinant Matched Antibody Pair, PBS Only. Capture antibody: 84405-4-PBS. Detection antibody: 84405-3-PBS. Standard: Eg2486. Range: 0.625-80 ng/mL