

For Research Use Only

Serum amyloid P component Recombinant antibody

Catalog Number: 84402-1-RR



Basic Information

Catalog Number: 84402-1-RR	GenBank Accession Number: BC007058	Purification Method: Protein A purification
Size: 100ul , Concentration: 1000 µg/ml by Nanodrop;	GeneID (NCBI): 325	CloneNo.: 241403F5
Source: Rabbit	UNIPROT ID: P02743	Recommended Dilutions: WB 1:2000-1:10000
Isotype: IgG	Full Name: amyloid P component, serum	
	Calculated MW: 223 aa, 25 kDa	
	Observed MW: 27-29 kDa	

Applications

Tested Applications: WB, ELISA	Positive Controls: WB : human plasma,
Species Specificity: human	

Background Information

Serum amyloid P component (SAP), a member of the pentraxin family, is a constitutive serum protein that is synthesized by hepatocytes. It is an acute phase protein, structurally related to C-reactive protein. SAP is a calcium-dependent ligand-binding protein, which can interact with DNA and histones and may scavenge nuclear material released from damaged circulating cells.

Storage

Storage:
Store at -20°C. Stable for one year after shipment.
Storage Buffer:
PBS with 0.02% sodium azide and 50% glycerol pH 7.3.
Aliquoting is unnecessary for -20°C storage

*** 20ul sizes contain 0.1% BSA

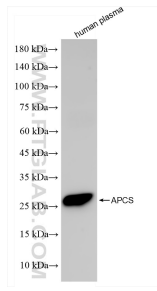
For technical support and original validation data for this product please contact:

T: 1 (888) 4PTGLAB (1-888-478-4522) (toll free
in USA), or 1(312) 455-8498 (outside USA)

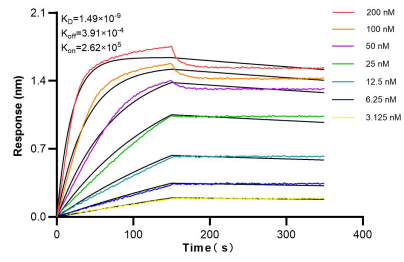
E: proteintech@ptglab.com
W: ptglab.com

This product is exclusively available under Proteintech Group brand and is not available to purchase from any other manufacturer.

Selected Validation Data



human plasma was subjected to SDS PAGE followed by western blot with 84402-1-RR (Serum amyloid P component antibody) at dilution of 1:5000 incubated at room temperature for 1.5 hours.



Biolayer interferometry (BLI) kinetic assays of 84402-1-RR against Human Serum amyloid P component were performed. The affinity constant is 1.49 nM.