

For Research Use Only

IL12RB1 Recombinant antibody

Catalog Number: 84391-4-RR



Basic Information

Catalog Number: 84391-4-RR	GenBank Accession Number: BC029121	Purification Method: Protein A purification
Size: 100ul , Concentration: 1000 µg/ml by Nanodrop;	GeneID (NCBI): 3594	CloneNo.: 241661D7
Source: Rabbit	UNIPROT ID: P42701	Recommended Dilutions: IF/ICC 1:125-1:500
Isotype: IgG	Full Name: interleukin 12 receptor, beta 1	
	Calculated MW: 662 aa, 73 kDa	

Applications

Tested Applications: IF/ICC, ELISA	Positive Controls: IF/ICC : K-562 cells, THP-1 cells
Species Specificity: human	

Background Information

IL12RB1, also named as Interleukin-12 receptor subunit beta-1 or CD212, is a 662 amino acid protein, which contains 5 fibronectin type-III domains and belongs to the type I cytokine receptor family. Type 2 subfamily. IL12RB1 localizes in the membrane and functions as an interleukin receptor which binds interleukin-12 with low affinity and is involved in IL12 transduction. Associated with IL12RB2 it forms a functional, high affinity receptor for IL12. Associates also with IL23R to form the interleukin-23 receptor which functions in IL23 signal transduction probably through activation of the Jak-Stat signaling cascade.

Storage

Storage:
Store at -20°C. Stable for one year after shipment.
Storage Buffer:
PBS with 0.02% sodium azide and 50% glycerol pH 7.3.
Aliquoting is unnecessary for -20°C storage

*** 20ul sizes contain 0.1% BSA

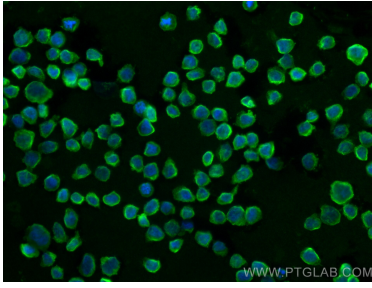
For technical support and original validation data for this product please contact:

T: 1 (888) 4PTGLAB (1-888-478-4522) (toll free in USA), or 1(312) 455-8498 (outside USA)

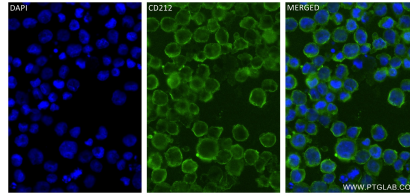
E: proteintech@ptglab.com
W: ptglab.com

This product is exclusively available under Proteintech Group brand and is not available to purchase from any other manufacturer.

Selected Validation Data



Immunofluorescent analysis of (4% PFA) fixed THP-1 cells using IL12RB1 antibody (84391-4-RR, Clone: 241661D7) at dilution of 1:400 and CoraLite®488-Conjugated Goat Anti-Rabbit IgG(H+L) (SA00013-2).



Immunofluorescent analysis of (4% PFA) fixed K-562 cells using IL12RB1 antibody (84391-4-RR, Clone: 241661D7) at dilution of 1:250 and CoraLite®488-Conjugated Goat Anti-Rabbit IgG(H+L) (SA00013-2).