

For Research Use Only

IGF1R Recombinant antibody

Catalog Number: 84385-3-RR



Basic Information

Catalog Number: 84385-3-RR	GenBank Accession Number: BC113612	Purification Method: Protein A purification
Size: 100ul , Concentration: 1000 µg/ml by Nanodrop;	GeneID (NCBI): 3480	CloneNo.: 241678B8
Source: Rabbit	UNIPROT ID: P08069	Recommended Dilutions: WB 1:2000-1:10000
Isotype: IgG	Full Name: IGF I receptor	
	Calculated MW: 1367 aa, 155 kDa	
	Observed MW: 130 kDa	

Applications

Tested Applications: WB, ELISA	Positive Controls: WB : MCF-7 cells, A549 cells, L02 cells
Species Specificity: human	

Background Information

IGF1R, also named as CD221, is a receptor tyrosine kinase which mediates actions of INS-like growth factor 1 (IGF1). IGF1R binds IGF1 with high affinity and IGF2 and INS with a lower affinity, the activated IGF1R is involved in cell growth and survival control. It is crucial for tumor transformation and survival of malignant cells. IGF1R is a heterotetrameric receptor, composed of two alpha subunits (130 kDa each) and two beta subunits (~98 kDa each) (PMID: 6279656). Both the alpha and beta subunits are synthesized from a single mRNA precursor. The precursor is then glycosylated, proteolytically cleaved, and crosslinked by cysteine bonds.

Storage

Storage:
Store at -20°C. Stable for one year after shipment.
Storage Buffer:
PBS with 0.02% sodium azide and 50% glycerol pH 7.3.
Aliquoting is unnecessary for -20°C storage

*** 20ul sizes contain 0.1% BSA

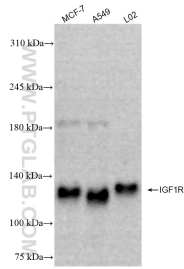
For technical support and original validation data for this product please contact:

T: 1 (888) 4PTGLAB (1-888-478-4522) (toll free
in USA), or 1(312) 455-8498 (outside USA)

E: proteintech@ptglab.com
W: ptglab.com

This product is exclusively available under Proteintech Group brand and is not available to purchase from any other manufacturer.

Selected Validation Data



Various lysates were subjected to SDS PAGE followed by western blot with 84385-3-RR (IGF1R antibody) at dilution of 1:5000 incubated at room temperature for 1.5 hours.