

For Research Use Only

IGF1R Recombinant antibody, PBS Only (Capture)

Catalog Number: 84385-2-PBS



Basic Information

Catalog Number: 84385-2-PBS	GenBank Accession Number: BC113612	Purification Method: Protein A purification
Size: 100ug, Concentration: 1 mg/ml by Nanodrop;	GeneID (NCBI): 3480	CloneNo.: 241679C2
Source: Rabbit	UNIPROT ID: P08069	
Isotype: IgG	Full Name: IGF I receptor	
	Calculated MW: 1367 aa, 155 kDa	

Applications

Tested Applications:
Sandwich ELISA, Indirect ELISA, Sample test

Species Specificity:
human

Product Information

84385-2-PBS targets IGF1R as part of a matched antibody pair.

MP00869-4: 84385-2-PBS capture and 84385-5-PBS detection (validated in Sandwich ELISA)

Unconjugated rabbit recombinant monoclonal antibody in PBS only (BSA and azide free) storage buffer at a concentration of 1 mg/mL, ready for conjugation. Created using Proteintech's proprietary in-house recombinant technology. Recombinant production enables unrivalled batch-to-batch consistency, easy scale-up, and future security of supply.

This conjugation ready format makes antibodies ideal for use in many applications including: ELISAs, multiplex assays requiring matched pairs, mass cytometry, and multiplex imaging applications. Antibody use should be optimized by the end user for each application and assay.

Storage

Storage:
Store at -80°C.
Storage Buffer:
PBS Only

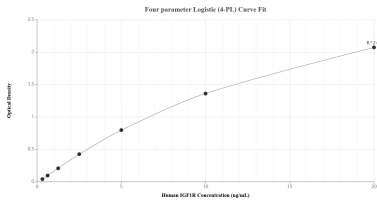
For technical support and original validation data for this product please contact:

T: 1 (888) 4PTGLAB (1-888-478-4522) (toll free
in USA), or 1(312) 455-8498 (outside USA)

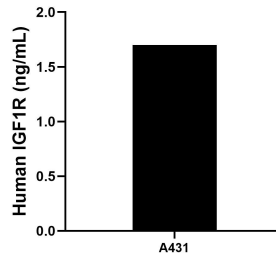
E: proteintech@ptglab.com
W: ptglab.com

This product is exclusively available under Proteintech Group brand and is not available to purchase from any other manufacturer.

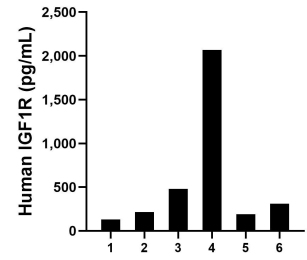
Selected Validation Data



Sandwich ELISA standard curve of MP00869-4, Human IGF1R Recombinant Matched Antibody Pair - PBS only. 84385-2-PBS was coated to a plate as the capture antibody and incubated with serial dilutions of standard RPO0008. 84385-5-PBS was HRP conjugated as the detection antibody. Range: 0.313-20 ng/mL.



The mean IGF1R concentration was determined to be 1.70 ng/mL in A431 cell extract based on a 2.90 mg/mL extract load.



Serum of six individual healthy human donors was measured. The IGF1R concentration of detected samples was determined to be 566.66 pg/mL with a range of 132.19-2,068.11 pg/mL.