

For Research Use Only

# PDGFR alpha/CD140a Recombinant antibody, PBS Only (Capture)

Catalog Number: 84383-2-PBS



## Basic Information

<b>Catalog Number:</b> 84383-2-PBS	<b>GenBank Accession Number:</b> BC015186	<b>Purification Method:</b> Protein A purification
<b>Size:</b> 100ug, Concentration: 1 mg/ml by Nanodrop;	<b>GeneID (NCBI):</b> 5156	<b>CloneNo.:</b> 241658G6
<b>Source:</b> Rabbit	<b>UNIPROT ID:</b> P16234	
<b>Isotype:</b> IgG	<b>Full Name:</b> platelet-derived growth factor receptor, alpha polypeptide	
	<b>Calculated MW:</b> 123 kDa	
	<b>Observed MW:</b> 170-190 kDa	

## Applications

**Tested Applications:**  
WB, Cytometric bead array, Indirect ELISA

**Species Specificity:**  
human, mouse

## Product Information

84383-2-PBS targets PDGFR alpha/CD140a as part of a matched antibody pair:

MP01256-2: 84383-2-PBS capture and 84383-3-PBS detection (validated in Cytometric bead array)

Unconjugated rabbit recombinant monoclonal antibody in PBS only (BSA and azide free) storage buffer at a concentration of 1 mg/mL, ready for conjugation. Created using Proteintech's proprietary in-house recombinant technology. Recombinant production enables unrivalled batch-to-batch consistency, easy scale-up, and future security of supply.

This conjugation ready format makes antibodies ideal for use in many applications including: ELISAs, multiplex assays requiring matched pairs, mass cytometry, and multiplex imaging applications. Antibody use should be optimized by the end user for each application and assay.

## Background Information

Platelet-derived growth factor receptor alpha (PDGFRA, also known as CD140a) is a cell surface tyrosine kinase receptor for members of the platelet-derived growth factor family. PDGFRA is implicated in the regulation of embryonic development, tumorigenesis, cell proliferation, survival, and chemotaxis. Mutations in the PDGFRA gene have been associated with idiopathic hypereosinophilic syndrome, somatic and familial gastrointestinal stromal tumors, and a variety of other cancers.

## Storage

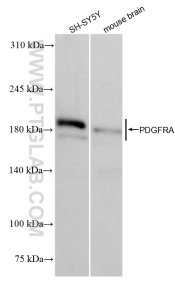
**Storage:**  
Store at -80°C.

**Storage Buffer:**  
PBS Only

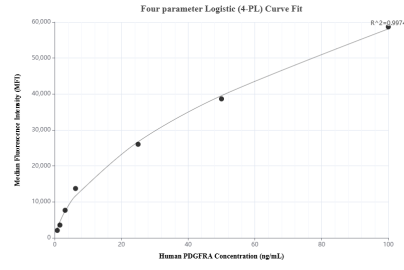
For technical support and original validation data for this product please contact:  
T: 1 (888) 4PTGLAB (1-888-478-4522) (toll free in USA), or 1(312) 455-8498 (outside USA)      E: [proteintech@ptglab.com](mailto:proteintech@ptglab.com)      W: [ptglab.com](http://ptglab.com)

**This product is exclusively available under Proteintech Group brand and is not available to purchase from any other manufacturer.**

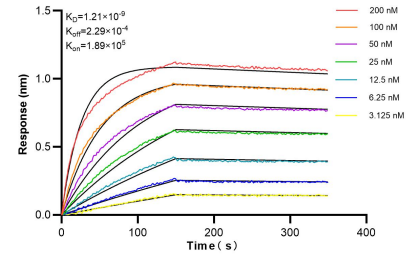
## Selected Validation Data



Various lysates were subjected to SDS PAGE followed by western blot with 84383-2-RR (PDGFRA antibody) at dilution of 1:5000 incubated at room temperature for 1.5 hours. This data was developed using the same antibody clone with 84383-2-PBS in a different storage buffer formulation.



Cytometric bead array standard curve of MP01256-2, PDGFR alpha/CD140a Recombinant Matched Antibody Pair, PBS Only. Capture antibody: 84383-2-PBS. Detection antibody: 84383-3-PBS. Standard: RP00003. Range: 0.781-100 ng/mL



Bi-layer interferometry (BLI) kinetic assays of 84383-2-RR against Human PDGFR alpha/CD140a were performed. The affinity constant is 1.21 nM.