

For Research Use Only

CYP2R1 Recombinant antibody

Catalog Number: 84378-5-RR



Basic Information

Catalog Number: 84378-5-RR	GenBank Accession Number: BC104909	Purification Method: Protein A purification
Size: 100ul , Concentration: 1000 µg/ml by Nanodrop;	GeneID (NCBI): 120227	CloneNo.: 241072F11
Source: Rabbit	UNIPROT ID: Q6VVX0	Recommended Dilutions: WB 1:1000-1:4000
Isotype: IgG	Full Name: cytochrome P450, family 2, subfamily R, polypeptide 1	
Immunogen Catalog Number: AG12873	Calculated MW: 501 aa, 57 kDa	
	Observed MW: 57 kDa	

Applications

Tested Applications: WB, FC (Intra), ELISA	Positive Controls: WB : HeLa cells, HepG2 cells, HuH-7 cells, human placenta tissue
Species Specificity: human	

Background Information

CYP2R1 is a member of the cytochrome P450 superfamily of enzymes which catalyze many reactions involved in drug metabolism and synthesis of cholesterol, steroids, and other lipids. CYP2R1 primarily functions as a 25-hydroxylase of vitamin D, responsible for converting vitamin D to 25-hydroxyvitamin D (25-OH-D), affecting the production of the active hormone 1,25(OH)2D (PMID: 12867411). CYP2R1 enzyme is a key vitamin D 25-hydroxylase, mutations in CYP2R1 are associated with Rickets vitamin D-dependent 1B(PMID: 25942481, 15128933).

Storage

Storage:
Store at -20°C. Stable for one year after shipment.
Storage Buffer:
PBS with 0.02% sodium azide and 50% glycerol pH 7.3.
Aliquoting is unnecessary for -20°C storage

*** 20ul sizes contain 0.1% BSA

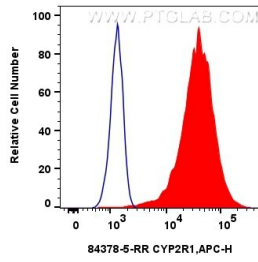
For technical support and original validation data for this product please contact:

T: 1 (888) 4PTGLAB (1-888-478-4522) (toll free in USA), or 1(312) 455-8498 (outside USA)

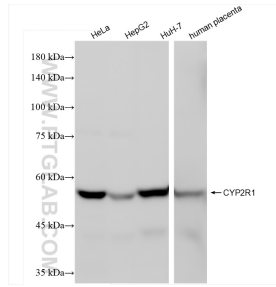
E: proteintech@ptglab.com
W: ptglab.com

This product is exclusively available under Proteintech Group brand and is not available to purchase from any other manufacturer.

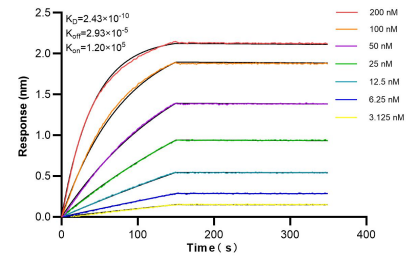
Selected Validation Data



1x10⁶ HeLa cells were intracellularly stained with 0.25 ug CYP2R1 Recombinant antibody (84378-5-RR, Clone:241072F11) and PE-Conjugated Goat Anti-Rabbit IgG(H+L)(red), or 0.25 ug Rabbit IgG Isotype Control Recombinant Antibody (98136-1-RR, Clone: 240953C9) (blue). Cells were fixed with 4% PFA and permeabilized with Flow Cytometry Perm Buffer (PF00011-C).



Various lysates were subjected to SDS PAGE followed by western blot with 84378-5-RR (CYP2R1 antibody) at dilution of 1:2000 incubated at room temperature for 1.5 hours.



Bi-layer interferometry (BLI) kinetic assays of 84378-5-RR against Human CYP2R1 were performed. The affinity constant is 0.243 nM.