

For Research Use Only

EPN2 Recombinant antibody, PBS Only

Catalog Number: 84366-5-PBS



Basic Information

Catalog Number: 84366-5-PBS	GenBank Accession Number: BC093972	Purification Method: Protein A purification
Size: 100ug, Concentration: 1 mg/ml by Nanodrop;	GeneID (NCBI): 22905	CloneNo.: 241634F12
Source: Rabbit	UNIPROT ID: O95208	
Isotype: IgG	Full Name: epsin 2	
Immunogen Catalog Number: AG35194	Calculated MW: 584 aa, 62 kDa	
	Observed MW: 62 kDa	

Applications

Tested Applications:
WB, IHC, Indirect ELISA

Species Specificity:
human, mouse

Background Information

EPN2 (EPS 15 interacting protein 2) is a protein that interacts with clathrin and adaptor-related protein complex 2, alpha 1 subunit. EPN2 is found in a brain-derived clathrin-coated vesicle fraction and localizes to the peri-Golgi region and the cell periphery.

Storage

Storage:
Store at -80°C.

Storage Buffer:
PBS Only

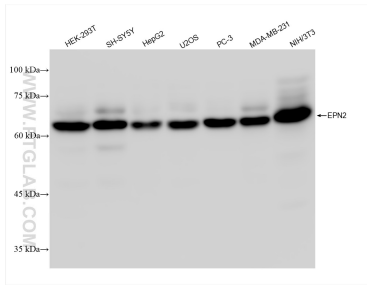
For technical support and original validation data for this product please contact:

T: 1 (888) 4PTGLAB (1-888-478-4522) (toll free in USA), or 1(312) 455-8498 (outside USA)

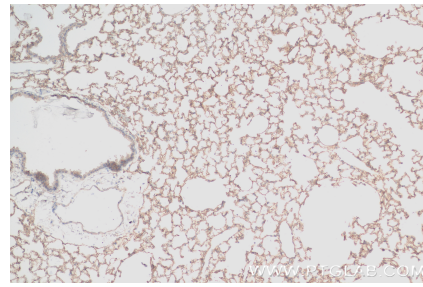
E: proteintech@ptglab.com
W: ptglab.com

This product is exclusively available under Proteintech Group brand and is not available to purchase from any other manufacturer.

Selected Validation Data



Various lysates were subjected to SDS PAGE followed by western blot with 84366-5-RR (EPN2 antibody) at dilution of 1:5000 incubated at room temperature for 1.5 hours. This data was developed using the same antibody clone with 84366-5-PBS in a different storage buffer formulation.



Immunohistochemical analysis of paraffin-embedded mouse lung tissue slide using 84366-5-RR (EPN2 antibody) at dilution of 1:200 (under 10x lens). Heat mediated antigen retrieval with Tris-EDTA buffer (pH 9.0). This data was developed using the same antibody clone with 84366-5-PBS in a different storage buffer formulation.