

For Research Use Only

SIGNR1/CD209b Recombinant antibody

Catalog Number: 84365-5-RR



Basic Information

Catalog Number:

84365-5-RR

Size:

100ul

Source:

Rabbit

Isotype:

IgG

GenBank Accession Number:

NM_026972.5

GeneID (NCBI):

69165

UNIPROT ID:

Q8CJ91-1

Full Name:

CD209b antigen

Calculated MW:

37 kDa

Observed MW:

45-50 kDa

Purification Method:

Protein A purification

CloneNo.:

241726B1

Recommended Dilutions:

WB 1:5000-1:50000

IHC 1:2000-1:8000

Applications

Tested Applications:

WB, IHC, ELISA

Species Specificity:

mouse

Positive Controls:

WB : mouse spleen tissue,

IHC : mouse spleen tissue,

**Note-IHC: suggested antigen retrieval with
TE buffer pH 9.0; (*) Alternatively, antigen
retrieval may be performed with citrate
buffer pH 6.0**

Background Information

SIGNR1 (CD209b) is a mouse homolog of the human DC-SIGN receptor (PMID: 11581173). SIGNR1 is a type II transmembrane protein with an extracellular domain consisting of a neck region made up of four repeats of 28 amino acids and a carbohydrate recognition domain (PMID: 15583012). It is expressed on marginal zone macrophages and peritoneal macrophages and is a key receptor for the recognition and efficient clearance of pathogens by the innate immune system.

Storage

Storage:

Store at -20°C. Stable for one year after shipment.

Storage Buffer:

PBS with 0.02% sodium azide and 50% glycerol pH 7.3.

Aliquoting is unnecessary for -20°C storage

*** 20ul sizes contain 0.1% BSA

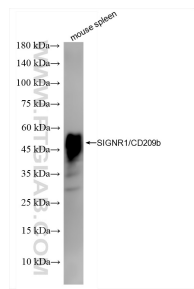
For technical support and original validation data for this product please contact:

T: 1 (888) 4PTGLAB (1-888-478-4522) (toll free
in USA), or 1(312) 455-8498 (outside USA)

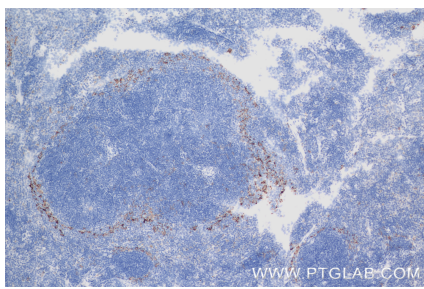
E: proteintech@ptglab.com
W: ptglab.com

This product is exclusively available under Proteintech Group brand and is not available to purchase from any other manufacturer.

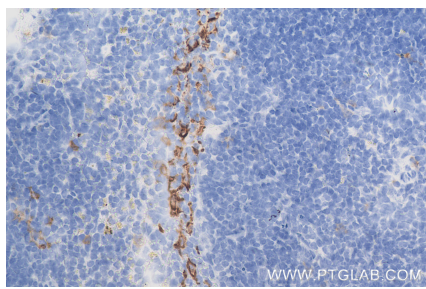
Selected Validation Data



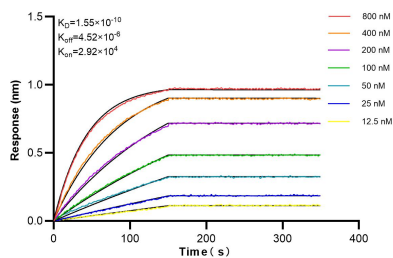
mouse spleen tissue were subjected to SDS PAGE followed by western blot with 84365-5-RR (SIGNR1/CD209b antibody) at dilution of 1:10000 incubated at room temperature for 1.5 hours.



Immunohistochemical analysis of paraffin-embedded mouse spleen tissue slide using 84365-5-RR (SIGNR1/CD209b antibody) at dilution of 1:4000 (under 10x lens). Heat mediated antigen retrieval with Tris-EDTA buffer (pH 9.0).



Immunohistochemical analysis of paraffin-embedded mouse spleen tissue slide using 84365-5-RR (SIGNR1/CD209b antibody) at dilution of 1:4000 (under 40x lens). Heat mediated antigen retrieval with Tris-EDTA buffer (pH 9.0).



Biolayer interferometry (BLI) kinetic assays of 84365-5-RR against Mouse SIGNR1/CD209b were performed. The affinity constant is 0.155 nM.