

For Research Use Only

Somatostatin Recombinant antibody, PBS Only

Catalog Number: 84351-1-PBS



Basic Information

Catalog Number: 84351-1-PBS	GenBank Accession Number: NM_001048	Purification Method: Protein A purification
Size: 100ug, Concentration: 1 mg/ml by Nanodrop;	GeneID (NCBI): 6750	CloneNo.: 240816D9
Source: Rabbit	UNIPROT ID: P61278	Recommended Dilutions: IHC 1:20000-1:80000
Isotype: IgG	Full Name: somatostatin	
	Calculated MW: 13 kDa	

Applications

Tested Applications:
IHC, IF-P, Indirect ELISA

Species Specificity:
human, mouse

Positive Controls:
IHC : mouse pancreas tissue,

**Note-IHC: suggested antigen retrieval with
TE buffer pH 9.0; (*) Alternatively, antigen
retrieval may be performed with citrate
buffer pH 6.0**

Background Information

Somatostatin is a peptide hormone that regulates the endocrine system and affects neurotransmission and cell proliferation via interaction with G protein-coupled somatostatin receptors and inhibition of the release of numerous secondary hormones. Somatostatin is a useful marker of D-cells of pancreatic islet cells. Somatostatin inhibits ins and glucagon secretion. Somatostatin has two active forms produced by alternative cleavage of a single preproprotein: one of 14 amino acids, the other of 28 amino acids.

Storage

Storage:
Store at -80°C.

Storage Buffer:
PBS Only

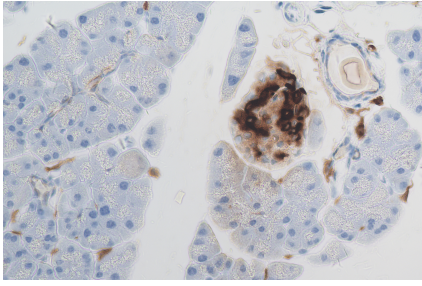
For technical support and original validation data for this product please contact:

T: 1 (888) 4PTGLAB (1-888-478-4522) (toll free
in USA), or 1(312) 455-8498 (outside USA)

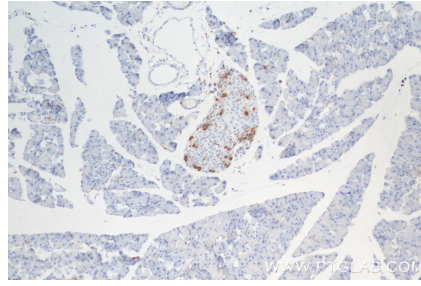
E: proteintech@ptglab.com
W: ptglab.com

**This product is exclusively available under Proteintech
Group brand and is not available to purchase from any
other manufacturer.**

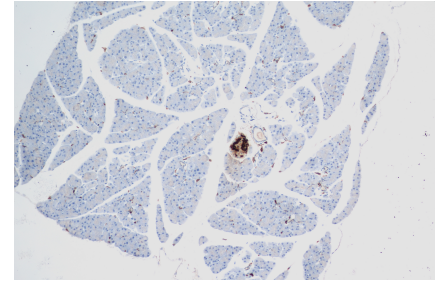
Selected Validation Data



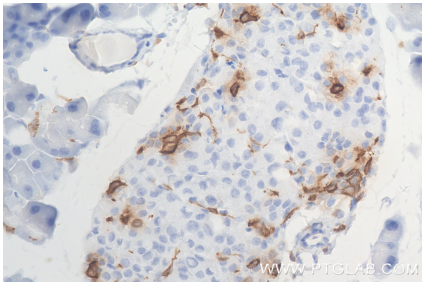
Immunohistochemical analysis of paraffin-embedded mouse pancreas tissue slide using 84351-1-RR (SST-Specific antibody) at dilution of 1:10000 (under 40x lens). Heat mediated antigen retrieval with Tris-EDTA buffer (pH 9.0). This data was developed using the same antibody clone with 84351-1-PBS in a different storage buffer formulation.



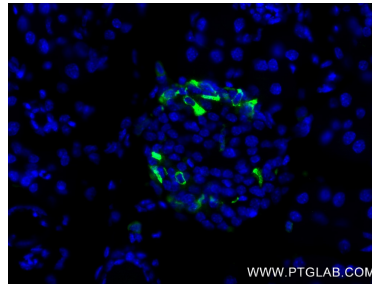
Immunohistochemical analysis of paraffin-embedded mouse pancreas tissue slide using 84351-1-PBS (Somatostatin antibody) at dilution of 1:40000 (under 10x lens). Heat mediated antigen retrieval with Tris-EDTA buffer (pH 9.0).



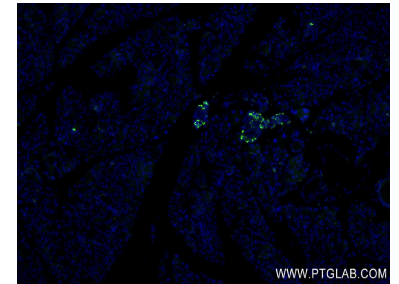
Immunohistochemical analysis of paraffin-embedded mouse pancreas tissue slide using 84351-1-RR (SST-Specific antibody) at dilution of 1:10000 (under 10x lens). Heat mediated antigen retrieval with Tris-EDTA buffer (pH 9.0). This data was developed using the same antibody clone with 84351-1-PBS in a different storage buffer formulation.



Immunohistochemical analysis of paraffin-embedded mouse pancreas tissue slide using 84351-1-PBS (Somatostatin antibody) at dilution of 1:40000 (under 40x lens). Heat mediated antigen retrieval with Tris-EDTA buffer (pH 9.0).



Immunofluorescent analysis of (4% PFA) fixed paraffin-embedded mouse pancreas tissue using Somatostatin antibody (84351-1-RR, Clone: 240816D9) at dilution of 1:400 and CoraLite® 488-Conjugated Goat Anti-Rabbit IgG(H+L) (SA00013-2). Heat mediated antigen retrieval with Tris-EDTA buffer (pH 9.0). This data was developed using the same antibody clone with 84351-1-PBS in a different storage buffer formulation.



Immunofluorescent analysis of (4% PFA) fixed paraffin-embedded mouse pancreas tissue using Somatostatin antibody (84351-1-RR, Clone: 240816D9) at dilution of 1:400 and CoraLite® 488-Conjugated Goat Anti-Rabbit IgG(H+L) (SA00013-2). Heat mediated antigen retrieval with Tris-EDTA buffer (pH 9.0). This data was developed using the same antibody clone with 84351-1-PBS in a different storage buffer formulation.