

For Research Use Only

Alpha-2-Macroglobulin Recombinant antibody, PBS Only

Catalog Number: 84347-5-PBS



Basic Information

Catalog Number: 84347-5-PBS	GenBank Accession Number: NM_000014.6	Purification Method: Protein A purification
Size: 100ug, Concentration: 1 mg/ml by Nanodrop;	GeneID (NCBI): 2	CloneNo.: 241649D2
Source: Rabbit	UNIPROT ID: P01023	
Isotype: IgG	Full Name: alpha-2-macroglobulin	
	Calculated MW: 163kDa	
	Observed MW: 185 kDa	

Applications

Tested Applications:
WB, IF/ICC, FC (Intra), Indirect ELISA

Species Specificity:
human

Background Information

Alpha-2-Macroglobulin, also known as α 2-macroglobulin (α 2M or A2M), is a protein abundant in the plasma of vertebrates and several invertebrates. A2M is an evolutionarily conserved arm of the innate immune system. It also mediates the proliferation of T cells and macrophages. A2M acts as a nonspecific protease inhibitor involved in the host defense mechanism that inactivates both endogenous and exogenous proteases, including trypsin, thrombin and collagenase. Even though A2M is produced predominantly by the liver, it may also be expressed in the reproductive tract, heart, and brain, and may have important roles in many physiological processes and medical illnesses including Alzheimer's disease.

Storage

Storage:
Store at -80°C.

Storage Buffer:
PBS Only

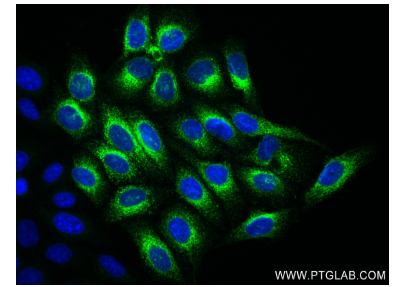
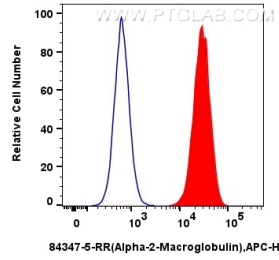
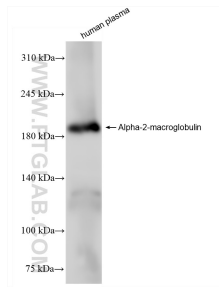
For technical support and original validation data for this product please contact:

T: 1 (888) 4PTGLAB (1-888-478-4522) (toll free in USA), or 1(312) 455-8498 (outside USA)

E: proteintech@ptglab.com
W: ptglab.com

This product is exclusively available under Proteintech Group brand and is not available to purchase from any other manufacturer.

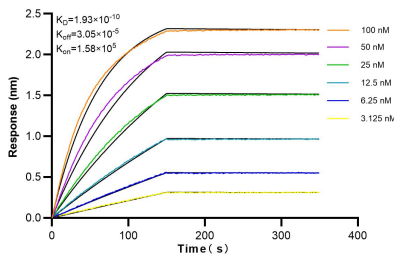
Selected Validation Data



human plasma were subjected to SDS PAGE followed by western blot with 84347-5-RR (Alpha-2-Macroglobulin antibody) at dilution of 1:10000 incubated at room temperature for 1.5 hours. This data was developed using the same antibody clone with 84347-5-PBS in a different storage buffer formulation.

1×10^6 HepG2 cells were intracellularly stained with 0.25 μ g Alpha-2-Macroglobulin Recombinant antibody (84347-5-RR, Clone:241649D2) and Multi-rAb CoraLite @ Plus 647-Goat Anti-Rabbit Recombinant Secondary Antibody (H+L) (RGAR005)(red), or 0.25 μ g Rabbit IgG Isotype Control Recombinant Antibody (98136-1-RR, Clone: 240953C9) (blue). Cells were fixed with 4% PFA and permeabilized with Flow Cytometry Perm Buffer (PF00011-C). This data was

Immunofluorescent analysis of (-20°C Ethanol) fixed HepG2 cells using Alpha-2-Macroglobulin antibody (84347-5-RR, Clone: 241649D2) at dilution of 1:250 and CoraLite@488-Conjugated Goat Anti-Rabbit IgG(H+L) (SA00013-2). This data was developed using the same antibody clone with 84347-5-PBS in a different storage buffer formulation.



Bi-layer interferometry (BLI) kinetic assays of 84347-5-RR against Human Alpha-2-Macroglobulin were performed. The affinity constant is 0.193 nM.