

For Research Use Only

Alpha-2-Macroglobulin Recombinant antibody, PBS Only (Detector)

Catalog Number: 84347-4-PBS



Basic Information

Catalog Number: 84347-4-PBS	GenBank Accession Number: NM_000014.6	Purification Method: Protein A purification
Size: 100ug, Concentration: 1 mg/ml by Nanodrop;	GeneID (NCBI): 2	CloneNo.: 241649G3
Source: Rabbit	UNIPROT ID: P01023	
Isotype: IgG	Full Name: alpha-2-macroglobulin	
	Calculated MW: 163kDa	

Applications

Tested Applications:
Cytometric bead array, Sandwich ELISA, Indirect ELISA, Sample test

Species Specificity:
human

Product Information

84347-4-PBS targets Alpha-2-Macroglobulin as part of a matched antibody pair:

MP01224-2: 84347-3-PBS capture and 84347-4-PBS detection (validated in Cytometric bead array, Sandwich ELISA)

MP01224-3: 84347-1-PBS capture and 84347-4-PBS detection (validated in Cytometric bead array)

Unconjugated rabbit recombinant monoclonal antibody in PBS only (BSA and azide free) storage buffer at a concentration of 1 mg/mL, ready for conjugation. Created using Proteintech's proprietary in-house recombinant technology. Recombinant production enables unrivalled batch-to-batch consistency, easy scale-up, and future security of supply.

This conjugation ready format makes antibodies ideal for use in many applications including: ELISAs, multiplex assays requiring matched pairs, mass cytometry, and multiplex imaging applications. Antibody use should be optimized by the end user for each application and assay.

Storage

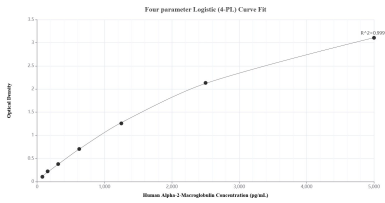
Storage:
Store at -80°C.

Storage Buffer:
PBS Only

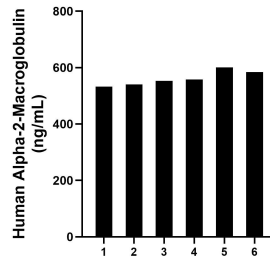
For technical support and original validation data for this product please contact:
T: 1 (888) 4PTGLAB (1-888-478-4522) (toll free in USA), or 1(312) 455-8498 (outside USA) E: proteintech@ptglab.com
W: ptglab.com

This product is exclusively available under Proteintech Group brand and is not available to purchase from any other manufacturer.

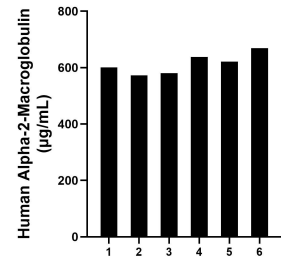
Selected Validation Data



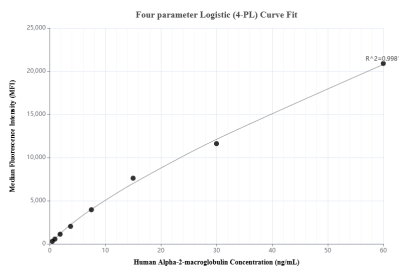
Sandwich ELISA standard curve of MP01224-2, Human Alpha-2-Macroglobulin Recombinant Matched Antibody Pair - PBS only. 84347-3-PBS was coated to a plate as the capture antibody and incubated with serial dilutions of standard Eg1198. 84347-4-PBS was HRP conjugated as the detection antibody. Range: 78.1-5000 pg/mL



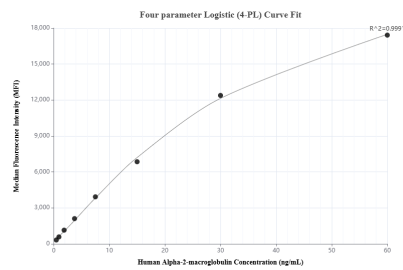
Human milk of six individual healthy human donors was measured. The Alpha-2-Macroglobulin concentration of detected samples was determined to be 561.6 ng/mL with a range of 532.9-600.9 ng/mL



Serum of six individual healthy human donors was measured. The Alpha-2-Macroglobulin concentration of detected samples was determined to be 614.0 µg/mL with a range of 573.2-669.4 µg/mL



Cytometric bead array standard curve of MP01224-2, Alpha-2-macroglobulin Recombinant Matched Antibody Pair, PBS Only. Capture antibody: 84347-3-PBS. Detection antibody: 84347-4-PBS. Standard: Eg1198. Range: 0.469-60 ng/mL



Cytometric bead array standard curve of MP01224-3, Alpha-2-macroglobulin Recombinant Matched Antibody Pair, PBS Only. Capture antibody: 84347-1-PBS. Detection antibody: 84347-4-PBS. Standard: Eg1198. Range: 0.469-60 ng/mL