

For Research Use Only

# PAX6 Recombinant antibody

Catalog Number: 84345-5-RR



## Basic Information

<b>Catalog Number:</b> 84345-5-RR	<b>GenBank Accession Number:</b> BC011953	<b>Purification Method:</b> Protein A purification
<b>Size:</b> 100ul , Concentration: 1000 µg/ml by Nanodrop;	<b>GeneID (NCBI):</b> 5080	<b>CloneNo.:</b> 241521G1
<b>Source:</b> Rabbit	<b>UNIPROT ID:</b> P26367	<b>Recommended Dilutions:</b> WB 1:2000-1:16000 IHC 1:500-1:2000 IF-P 1:50-1:500
<b>Isotype:</b> IgG	<b>Full Name:</b> paired box 6	
<b>Immunogen Catalog Number:</b> AG2984	<b>Calculated MW:</b> 47 kDa	
	<b>Observed MW:</b> 47 kDa	

## Applications

**Tested Applications:**  
WB, IHC, IF-P, FC (Intra), ELISA

**Species Specificity:**  
human, mouse

**Note-IHC: suggested antigen retrieval with TE buffer pH 9.0; (\*) Alternatively, antigen retrieval may be performed with citrate buffer pH 6.0**

**Positive Controls:**

**WB :** HeLa cells, K-562 cells, Neuro-2a cells

**IHC :** mouse brain tissue, mouse eye tissue, mouse pancreas tissue

**IF-P :** mouse eye tissue,

## Background Information

PAX6, a paired domain and homeodomain-containing transcription factor. Interaction with TRIM11 leads to ubiquitination of PAX6 and its proteasomal degradation. PAX6 is one of the earliest genes expressed in the eye field and considered a master control gene for retinal and eye development. PAX6 also regulates the development of the olfactory, central nervous systems, pituitary, and pancreas. PAX6 mutations can cause complex ocular disorders such as aniridia and Peter's anomaly.

## Storage

**Storage:**  
Store at -20°C. Stable for one year after shipment.  
**Storage Buffer:**  
PBS with 0.02% sodium azide and 50% glycerol pH 7.3.  
**Aliquoting is unnecessary for -20°C storage**

**\*\*\* 20ul sizes contain 0.1% BSA**

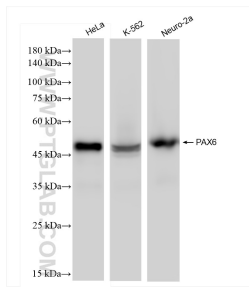
For technical support and original validation data for this product please contact:

T: 1 (888) 4PTGLAB (1-888-478-4522) (toll free in USA), or 1(312) 455-8498 (outside USA)

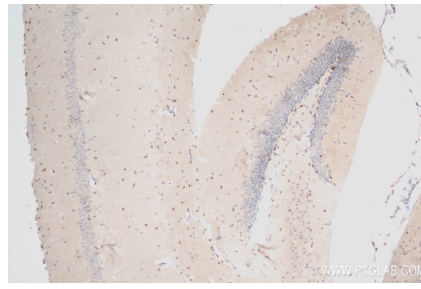
E: [proteintech@ptglab.com](mailto:proteintech@ptglab.com)  
W: [ptglab.com](http://ptglab.com)

**This product is exclusively available under Proteintech Group brand and is not available to purchase from any other manufacturer.**

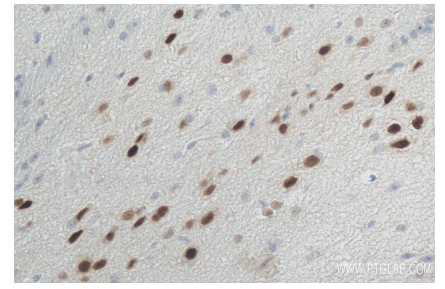
## Selected Validation Data



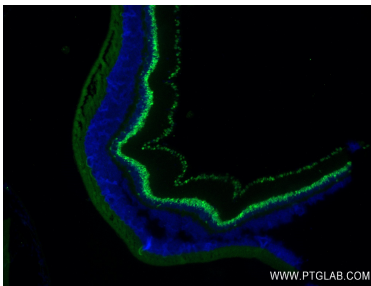
Various lysates were subjected to SDS PAGE followed by western blot with 84345-5-RR (PAX6 antibody) at dilution of 1:8000 incubated at room temperature for 1.5 hours.



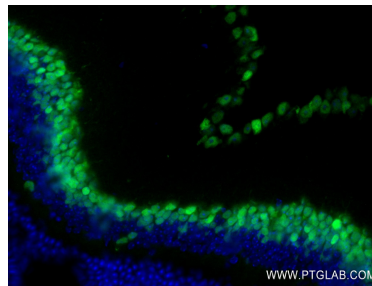
Immunohistochemical analysis of paraffin-embedded mouse brain tissue slide using 84345-5-RR (PAX6 antibody) at dilution of 1:1000 (under 10x lens). Heat mediated antigen retrieval with Tris-EDTA buffer (pH 9.0).



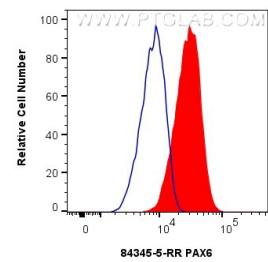
Immunohistochemical analysis of paraffin-embedded mouse brain tissue slide using 84345-5-RR (PAX6 antibody) at dilution of 1:1000 (under 40x lens). Heat mediated antigen retrieval with Tris-EDTA buffer (pH 9.0).



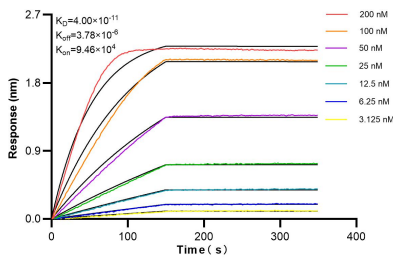
Immunofluorescent analysis of (4% PFA) fixed paraffin-embedded mouse eye tissue using PAX6 antibody (84345-5-RR, Clone: 241521G1) at dilution of 1:200 and CoraLite@488-Conjugated Goat Anti-Rabbit IgG(H+L) (SA00013-2). Heat mediated antigen retrieval with Tris-EDTA buffer (pH 9.0).



Immunofluorescent analysis of (4% PFA) fixed paraffin-embedded mouse eye tissue using PAX6 antibody (84345-5-RR, Clone: 241521G1) at dilution of 1:200 and CoraLite@488-Conjugated Goat Anti-Rabbit IgG(H+L) (SA00013-2). Heat mediated antigen retrieval with Tris-EDTA buffer (pH 9.0).



$1 \times 10^6$  U-251 cells were intracellularly stained with 0.25  $\mu$ g PAX6 Recombinant antibody (84345-5-RR, Clone: 241521G1) and CoraLite@488-Conjugated Goat Anti-Rabbit IgG(H+L) (SA00013-2) (red), or 0.25  $\mu$ g Rabbit IgG Isotype Control RecAb (98136-1-RR, Clone: 240953C9) (blue). Cells were fixed and permeabilized with Transcription Factor Staining Buffer Kit (PF00011).



Biolayer interferometry (BLI) kinetic assays of 84345-5-RR against Human PAX6 were performed. The affinity constant is 40.0 pM.