

For Research Use Only

PAX6 Recombinant antibody, PBS Only (Capture)

Catalog Number: 84345-2-PBS



Basic Information

| | | |
|--|--|---|
| Catalog Number: 84345-2-PBS | GenBank Accession Number: BC011953 | Purification Method: Protein A purification |
| Size: 100ug, Concentration: 1 mg/ml by Nanodrop; | GeneID (NCBI): 5080 | CloneNo.: 241521C10 |
| Source: Rabbit | UNIPROT ID: P26367 | |
| Isotype: IgG | Full Name: paired box 6 | |
| Immunogen Catalog Number: AG2984 | Calculated MW: 47 kDa | |

Applications

Tested Applications:
Cytometric bead array, Sandwich ELISA, Indirect ELISA, Sample test

Species Specificity:
human

Product Information

84345-2-PBS targets PAX6 as part of a matched antibody pair:

MP01219-1: 84345-2-PBS capture and 84345-3-PBS detection (validated in Cytometric bead array)

MP01219-4: 84345-2-PBS capture and 84345-4-PBS detection (validated in Sandwich ELISA)

Unconjugated rabbit recombinant monoclonal antibody in PBS only (BSA and azide free) storage buffer at a concentration of 1 mg/mL, ready for conjugation. Created using Proteintech's proprietary in-house recombinant technology. Recombinant production enables unrivalled batch-to-batch consistency, easy scale-up, and future security of supply.

This conjugation ready format makes antibodies ideal for use in many applications including: ELISAs, multiplex assays requiring matched pairs, mass cytometry, and multiplex imaging applications. Antibody use should be optimized by the end user for each application and assay.

Storage

Storage:
Store at -80°C.
Storage Buffer:
PBS Only

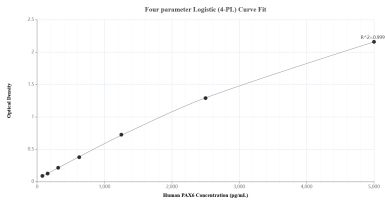
For technical support and original validation data for this product please contact:

T: 1 (888) 4PTGLAB (1-888-478-4522) (toll free in USA), or 1(312) 455-8498 (outside USA)

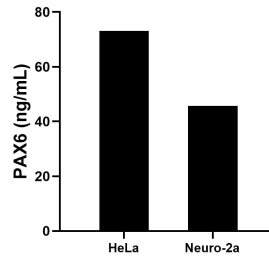
E: proteintech@ptglab.com
W: ptglab.com

This product is exclusively available under Proteintech Group brand and is not available to purchase from any other manufacturer.

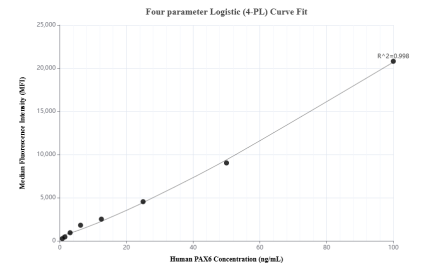
Selected Validation Data



Sandwich ELISA standard curve of MP01219-4, Human PAX6 Recombinant Matched Antibody Pair - PBS only. 84345-2-PBS was coated to a plate as the capture antibody and incubated with serial dilutions of standard Ag2984. 84345-4-PBS was HRP conjugated as the detection antibody. Range: 78.1-5000 pg/mL



The mean PAX6 concentration was determined to be 73.1 ng/mL in HeLa cell extract based on a 2.8 mg/mL extract load and 45.8 ng/mL in Neuro-2a cell extract based on a 2.3 mg/mL extract load.



Cytometric bead array standard curve of MP01219-1, PAX6 Recombinant Matched Antibody Pair, PBS Only. Capture antibody: 84345-2-PBS. Detection antibody: 84345-3-PBS. Standard: Ag2984. Range: 0.781-100 ng/mL