

For Research Use Only

# ZNF148 Recombinant antibody, PBS Only

Catalog Number: 84338-7-PBS



## Basic Information

<b>Catalog Number:</b> 84338-7-PBS	<b>GenBank Accession Number:</b> BC035591	<b>Purification Method:</b> Protein A purification
<b>Size:</b> 100ug , Concentration: 1 mg/ml by Nanodrop;	<b>GeneID (NCBI):</b> 7707	<b>CloneNo.:</b> 241632D8
<b>Source:</b> Rabbit	<b>UNIPROT ID:</b> Q9UQR1	
<b>Isotype:</b> IgG	<b>Full Name:</b> zinc finger protein 148	
<b>Immunogen Catalog Number:</b> AG35742	<b>Observed MW:</b> 103 kDa	

## Applications

**Tested Applications:**  
WB, Indirect ELISA

**Species Specificity:**  
human

## Background Information

The Kruppel-like zinc finger protein 148 (ZNF148), also known as  $\beta$  enolase repressor factor 1 (BERF1, ZBP-89, and BFCOL1), encoded by this gene is a member of the Kruppel family of zinc finger DNA binding proteins. ZNF 148 participates in the regulation of cell proliferation and death, and is expressed at lower levels in mammalian somatic cells, and highly expressed in tumor cells. Previous studies show that there was a significant correlation between ZNF 148 expression and the invasion and metastasis of colorectal tumors. ZNF 148 has two alternative splicing isoforms, which are ZNF148FL and ZNF148 $\Delta$ N. ZNF148FL contains a complete 794 amino acids, ZNF148 $\Delta$ N lacks the amino-terminal 129 amino acids, and the mechanisms involved in the generation of these two splicing isoforms are not yet clear (PMID: 30463804). Thus, ZNF 148 can be observed to have two molecular weights near 103 kDa.

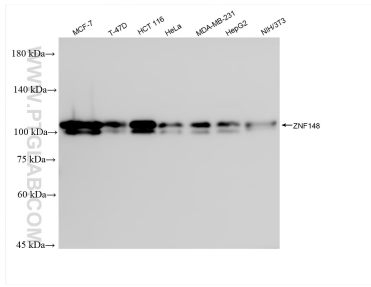
## Storage

**Storage:**  
Store at -80°C.  
**Storage Buffer:**  
PBS Only

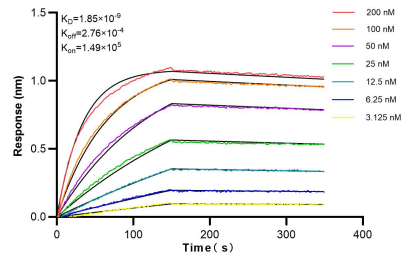
For technical support and original validation data for this product please contact:  
T: 1 (888) 4PTGLAB (1-888-478-4522) (toll free in USA), or 1(312) 455-8498 (outside USA)      E: proteintech@ptglab.com  
W: ptglab.com

This product is exclusively available under Proteintech Group brand and is not available to purchase from any other manufacturer.

## Selected Validation Data



Various lysates were subjected to SDS PAGE followed by western blot with 84338-7-RR (ZNF148 antibody) at dilution of 1:5000 incubated at room temperature for 1.5 hours. This data was developed using the same antibody clone with 84338-7-PBS in a different storage buffer formulation.



Biolayer interferometry (BLI) kinetic assays of 84338-7-RR against Human ZNF148 were performed. The affinity constant is 1.85 nM.