

For Research Use Only

C5AR1/CD88 Recombinant antibody, PBS Only

Catalog Number: 84336-6-PBS



Basic Information

Catalog Number: 84336-6-PBS	GenBank Accession Number: NM_001736.4	Purification Method: Protein A purification
Size: 100ug, Concentration: 1 mg/ml by Nanodrop;	GeneID (NCBI): 728	CloneNo.: 241712G8
Source: Rabbit	UNIPROT ID: P21730	
Isotype: IgG	Full Name: complement component 5a receptor 1	
	Calculated MW: 39kDa	

Applications

Tested Applications:
WB, IF/ICC, Indirect ELISA

Species Specificity:
human

Background Information

C5aR, also named CD88, is a G protein-coupled receptor for the anaphylatoxin C5a, a cleavage product of the complement cascade. The C5a ligand is a proinflammatory component of host defense. C5aR is activated upon binding of the C5a molecule. Receptor activation stimulates chemotaxis, granule enzyme release, intracellular calcium release, and superoxide anion production. The deduced sequence of C5aR contains 350 amino acids, giving a calculated molecular weight of 39 kDa. C5aR has an N-linked glycosylation site in the N-terminal extracellular domain. The apparent molecular weight of C5aR is about 40-52 kDa (PMID: 1847994; 9136907; 9136907; 2007135).

Storage

Storage:
Store at -80°C.
Storage Buffer:
PBS Only

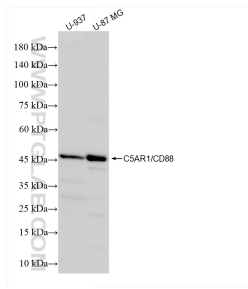
For technical support and original validation data for this product please contact:

T: 1 (888) 4PTGLAB (1-888-478-4522) (toll free
in USA), or 1(312) 455-8498 (outside USA)

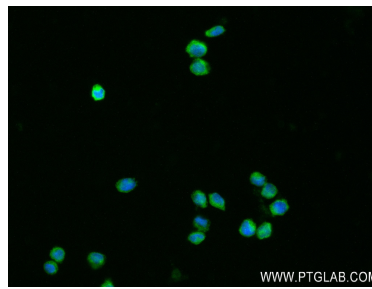
E: proteintech@ptglab.com
W: ptglab.com

This product is exclusively available under Proteintech Group brand and is not available to purchase from any other manufacturer.

Selected Validation Data



Various lysates were subjected to SDS PAGE followed by western blot with 84336-6-RR (C5AR1/CD88 antibody) at dilution of 1:500 incubated at room temperature for 1.5 hours. This data was developed using the same antibody clone with 84336-6-PBS in a different storage buffer formulation.



Immunofluorescent analysis of (4% PFA) fixed THP-1 cells using C5AR1/CD88 antibody (84336-6-RR, Clone: 241712G8) at dilution of 1:250 and CoraLite®488-Conjugated Goat Anti-Rabbit IgG(H+L) (SA00013-2). This data was developed using the same antibody clone with 84336-6-PBS in a different storage buffer formulation.