

For Research Use Only

# ICAM3/CD50 Recombinant antibody, PBS Only (Detector)

Catalog Number: 84335-3-PBS



## Basic Information

<b>Catalog Number:</b> 84335-3-PBS	<b>GenBank Accession Number:</b> BC058903	<b>Purification Method:</b> Protein A purification
<b>Size:</b> 100ug, Concentration: 1 mg/ml by Nanodrop;	<b>GeneID (NCBI):</b> 3385	<b>CloneNo.:</b> 241418C10
<b>Source:</b> Rabbit	<b>UNIPROT ID:</b> P32942	
<b>Isotype:</b> IgG	<b>Full Name:</b> intercellular adhesion molecule 3	
	<b>Calculated MW:</b> 547 aa, 60 kDa	

## Applications

**Tested Applications:**  
IF/ICC, Cytometric bead array, Indirect ELISA

**Species Specificity:**  
human

## Product Information

84335-3-PBS targets ICAM3/CD50 as part of a matched antibody pair:

MP01223-1: 98097-1-PBS capture and 84335-3-PBS detection (validated in Cytometric bead array)

Unconjugated rabbit recombinant monoclonal antibody in PBS only (BSA and azide free) storage buffer at a concentration of 1 mg/mL, ready for conjugation. Created using Proteintech's proprietary in-house recombinant technology. Recombinant production enables unrivalled batch-to-batch consistency, easy scale-up, and future security of supply.

This conjugation ready format makes antibodies ideal for use in many applications including: ELISAs, multiplex assays requiring matched pairs, mass cytometry, and multiplex imaging applications. Antibody use should be optimized by the end user for each application and assay.

## Background Information

Intercellular Adhesion Molecule 3 (ICAM-3), also known as CD50, is a member of the immunoglobulin superfamily. It is a transmembrane glycoprotein that contains an N-terminus extracellular domain, a single transmembrane domain, and a C-terminus cytoplasmic domain. ICAM-3 possesses 2-9 Ig-like C2-type domains in its extracellular region and is known to bind to the leukocyte adhesion protein LFA-1. This molecule is expressed on leukocytes and epidermal Langerhans cells and plays a significant role in immune cell interactions and T lymphocyte activation.

## Storage

**Storage:**  
Store at -80°C.  
**Storage Buffer:**  
PBS Only

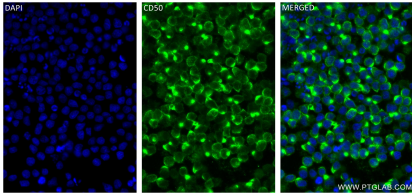
For technical support and original validation data for this product please contact:

T: 1 (888) 4PTGLAB (1-888-478-4522) (toll free  
in USA), or 1(312) 455-8498 (outside USA)

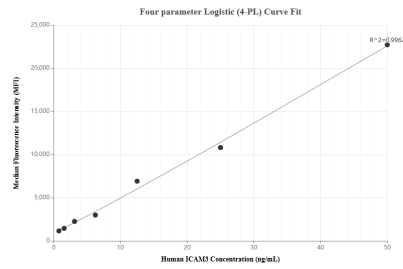
E: [proteintech@ptglab.com](mailto:proteintech@ptglab.com)  
W: [ptglab.com](http://ptglab.com)

**This product is exclusively available under Proteintech Group brand and is not available to purchase from any other manufacturer.**

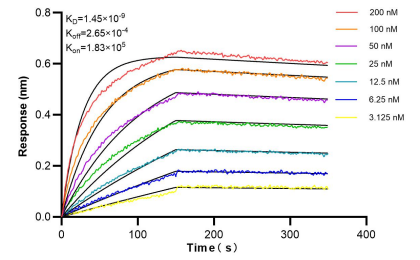
## Selected Validation Data



Immunofluorescent analysis of (4% PFA) fixed Ramos cells using ICAM3 antibody (84335-3-RR, Clone: 241418C10) at dilution of 1:250 and CoraLite®488-Conjugated Goat Anti-Rabbit IgG(H+L) (SA00013-2). This data was developed using the same antibody clone with 84335-3-PBS in a different storage buffer formulation.



Cytometric bead array standard curve of MP01223-1, ICAM3/CD50 Recombinant Matched Antibody Pair, PBS Only. Capture antibody: 98097-1-PBS. Detection antibody: 84335-3-PBS. Standard: RP02342. Range: 0.781-50 ng/mL



Bi-layer interferometry (BLI) kinetic assays of 84335-3-RR against Human ICAM3/CD50 were performed. The affinity constant is 1.45 nM.