

For Research Use Only

MTMR4 Recombinant antibody

Catalog Number: 84328-1-RR

Featured Product



Basic Information

Catalog Number:

84328-1-RR

Size:

100ul , Concentration: 1000 µg/ml by Nanodrop;

Source:

Rabbit

Isotype:

IgG

Immunogen Catalog Number:

AG4310

GenBank Accession Number:

BC035609

GeneID (NCBI):

9110

UNIPROT ID:

Q9NYA4

Full Name:

myotubularin related protein 4

Calculated MW:

1195 aa, 133 kDa

Observed MW:

160-170 kDa

Purification Method:

Protein A purification

CloneNo.:

241304E11

Recommended Dilutions:

WB 1:500-1:2000

IF/ICC 1:125-1:500

Applications

Tested Applications:

WB, IF/ICC, ELISA

Species Specificity:

human

Positive Controls:

WB : MCF-7 cells, Jurkat cells, HepG2 cells, HeLa cells

IF/ICC : HepG2 cells,

Background Information

Myotubularin-related protein-4 (MTMR4), also named FYVE-DSP2, is a member of the myotubularin family of phosphoinositide phosphatases that selectively degrade the 3-position phosphate from the inositol ring of PtdIns(3)P and phosphatidylinositol 3,5-bisphosphate (PtdIns(3,5)P₂) (PMID: 31543504). MTMR4 knockdown markedly suppressed the motility, fusion, and fission of PI(3)P- enriched structures, resulting in decreases in late endosomes, autophagosomes, and lysosomes, and enlargement of PI(3)P- enriched early and late endosomes (PMID: 29962048). MTMR4 is an intracellular protein with a calculated molecular mass of 133 kDa, and detected molecular weight in the papers is about 160-170 kDa, which may be due to post-translational modification (PMID: 19125695, PMID: 20736309).

Storage

Storage:

Store at -20°C. Stable for one year after shipment.

Storage Buffer:

PBS with 0.02% sodium azide and 50% glycerol pH 7.3.

Aliquoting is unnecessary for -20°C storage

*** 20ul sizes contain 0.1% BSA

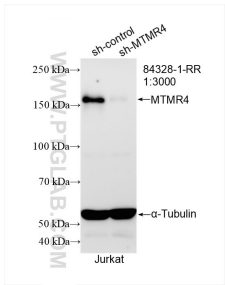
For technical support and original validation data for this product please contact:

T: 1 (888) 4PTGLAB (1-888-478-4522) (toll free in USA), or 1(312) 455-8498 (outside USA)

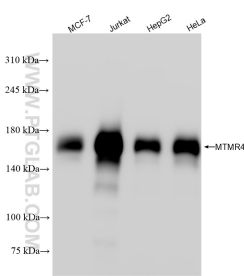
E: proteintech@ptglab.com
W: ptglab.com

This product is exclusively available under Proteintech Group brand and is not available to purchase from any other manufacturer.

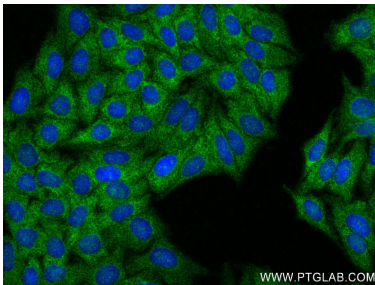
Selected Validation Data



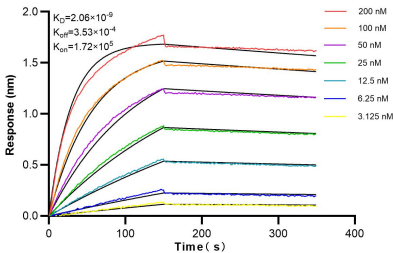
WB result of MTMR4 antibody (84328-1-RR; 1:3000; incubated at room temperature for 1.5 hours) with sh-Control and sh-MTMR4 transfected Jurkat cells.



Various lysates were subjected to SDS PAGE followed by western blot with 84328-1-RR (MTMR4 antibody) at dilution of 1:1000 incubated at room temperature for 1.5 hours.



Immunofluorescent analysis of (-20°C Ethanol) fixed HepG2 cells using MTMR4 antibody (84328-1-RR, Clone: 241304E11) at dilution of 1:250 and CoraLite®488-Conjugated Goat Anti-Rabbit IgG(H+L) (SA00013-2).



Biolayer interferometry (BLI) kinetic assays of 84328-1-RR against Human MTMR4 were performed. The affinity constant is 2.06 nM.