

For Research Use Only

# SEL1L Recombinant antibody, PBS Only (Capture)

Catalog Number: 84317-5-PBS



## Basic Information

<b>Catalog Number:</b> 84317-5-PBS	<b>GenBank Accession Number:</b> NM_005065	<b>Purification Method:</b> Protein A purification
<b>Size:</b> 100ug , Concentration: 1 mg/ml by Nanodrop;	<b>GeneID (NCBI):</b> 6400	<b>CloneNo.:</b> 241594H5
<b>Source:</b> Rabbit	<b>UNIPROT ID:</b> Q9UBV2	
<b>Isotype:</b> IgG	<b>Full Name:</b> sel-1 suppressor of lin-12-like (C. elegans)	
<b>Immunogen Catalog Number:</b> AG32178	<b>Calculated MW:</b> 89 kDa	

## Applications

**Tested Applications:**  
Cytometric bead array, Sandwich ELISA, Indirect ELISA, Sample test

**Species Specificity:**  
human

## Product Information

84317-5-PBS targets SEL1L as part of a matched antibody pair:

MP01186-1: 84317-5-PBS capture and 84317-2-PBS detection (validated in Cytometric bead array, Sandwich ELISA)

Unconjugated rabbit recombinant monoclonal antibody in PBS only (BSA and azide free) storage buffer at a concentration of 1 mg/mL, ready for conjugation. Created using Proteintech's proprietary in-house recombinant technology. Recombinant production enables unrivalled batch-to-batch consistency, easy scale-up, and future security of supply.

This conjugation ready format makes antibodies ideal for use in many applications including: ELISAs, multiplex assays requiring matched pairs, mass cytometry, and multiplex imaging applications. Antibody use should be optimized by the end user for each application and assay.

## Storage

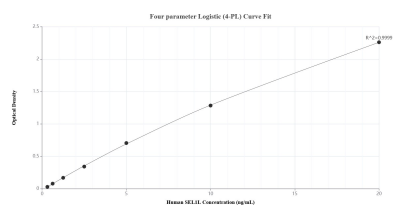
**Storage:**  
Store at -80°C.

**Storage Buffer:**  
PBS Only

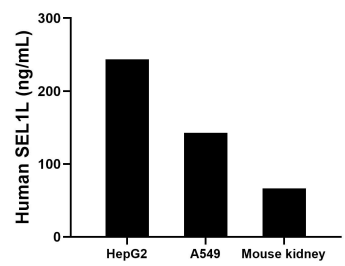
For technical support and original validation data for this product please contact:  
T: 1 (888) 4PTGLAB (1-888-478-4522) (toll free in USA), or 1(312) 455-8498 (outside USA)  
E: [proteintech@ptglab.com](mailto:proteintech@ptglab.com)  
W: [ptglab.com](http://ptglab.com)

This product is exclusively available under Proteintech Group brand and is not available to purchase from any other manufacturer.

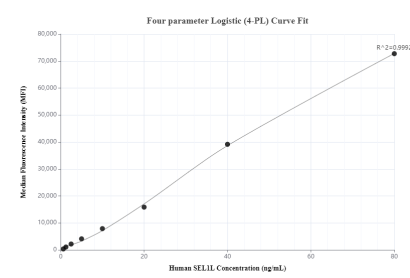
## Selected Validation Data



Sandwich ELISA standard curve of MP01186-1, Human SEL1L Recombinant Matched Antibody Pair - PBS only. 84317-5-PBS was coated to a plate as the capture antibody and incubated with serial dilutions of standard Ag32178. 84317-2-PBS was HRP conjugated as the detection antibody. Range: 0.313-20 ng/mL.



The mean SEL1L concentration was determined to be 243.66 ng/mL in HepG2 cell extract based on a 2.30 mg/mL extract load, 142.85 ng/mL in A549 cell extract based on a 2.70 mg/mL extract load and 66.47 ng/mL in mouse kidney cell extract based on a 3.10 mg/mL extract load.



Cytometric bead array standard curve of MP01186-1, SEL1L Recombinant Matched Antibody Pair, PBS Only. Capture antibody: 84317-5-PBS. Detection antibody: 84317-2-PBS. Standard: Ag32178. Range: 0.625-80 ng/mL.