

For Research Use Only

MCTS1 Recombinant antibody

Catalog Number: 84312-2-RR



Basic Information

Catalog Number: 84312-2-RR	GenBank Accession Number: BC001013	Purification Method: Protein A purification
Size: 100ul , Concentration: 1000 ug/ml by Nanodrop;	GeneID (NCBI): 28985	CloneNo.: 241576F2
Source: Rabbit	UNIPROT ID: Q9ULC4	Recommended Dilutions: WB 1:5000-1:50000
Isotype: IgG	Full Name: malignant T cell amplified sequence 1	
Immunogen Catalog Number: AG6968	Calculated MW: 21 kDa	
	Observed MW: 18-21 kDa	

Applications

Tested Applications: WB, ELISA	Positive Controls:
Species Specificity: human, mouse	WB : HeLa cells, Jurkat cells, K-562 cells, mouse brain tissue

Background Information

MCTS1 is an anti-oncogene that plays a role in cell cycle regulation. It can reduce cell doubling time and anchor-dependent growth. The G1 transition time and the duration of the G1 / S transition are shortened. It can also promote the release of deacylated tRNA and mRNA from recycled 40S subunits following ABCE1-mediated dissociation of post-termination ribosomal complexes into subunits (PMID: 10440924).

Storage

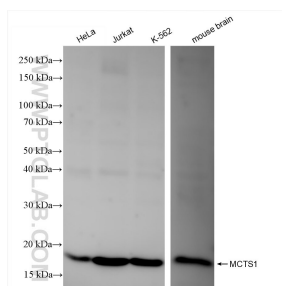
Storage:
Store at -20°C. Stable for one year after shipment.
Storage Buffer:
PBS with 0.02% sodium azide and 50% glycerol pH 7.3.
Aliquoting is unnecessary for -20°C storage

*** 20ul sizes contain 0.1% BSA

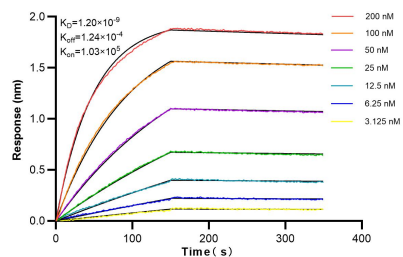
For technical support and original validation data for this product please contact:
T: 1 (888) 4PTGLAB (1-888-478-4522) (toll free in USA), or 1(312) 455-8498 (outside USA)
E: proteintech@ptglab.com
W: ptglab.com

This product is exclusively available under Proteintech Group brand and is not available to purchase from any other manufacturer.

Selected Validation Data



Various lysates were subjected to SDS PAGE followed by western blot with 84312-2-RR (MCTS1 antibody) at dilution of 1:10000 incubated at room temperature for 1.5 hours.



Biolayer interferometry (BLI) kinetic assays of 84312-2-RR against Human MCTS1 were performed. The affinity constant is 1.20 nM.