

For Research Use Only

# CCT5 Recombinant antibody, PBS Only (Capture)

Catalog Number: 84310-2-PBS



## Basic Information

<b>Catalog Number:</b> 84310-2-PBS	<b>GenBank Accession Number:</b> BC035499	<b>Purification Method:</b> Protein A purification
<b>Size:</b> 100ug , Concentration: 1 mg/ml by Nanodrop;	<b>GeneID (NCBI):</b> 22948	<b>CloneNo.:</b> 241510B3
<b>Source:</b> Rabbit	<b>UNIPROT ID:</b> P48643	
<b>Isotype:</b> IgG	<b>Full Name:</b> chaperonin containing TCP1, subunit 5 (epsilon)	
<b>Immunogen Catalog Number:</b> AG2146	<b>Calculated MW:</b> 541 aa, 60 kDa	
	<b>Observed MW:</b> 60 kDa	

## Applications

**Tested Applications:**  
WB, Cytometric bead array, Sandwich ELISA, Indirect ELISA, Sample test

**Species Specificity:**  
human

## Product Information

84310-2-PBS targets CCT5 as part of a matched antibody pair:

MP01209-1: 84310-2-PBS capture and 84310-1-PBS detection (validated in Cytometric bead array, Sandwich ELISA)

Unconjugated rabbit recombinant monoclonal antibody in PBS only (BSA and azide free) storage buffer at a concentration of 1 mg/mL, ready for conjugation. Created using Proteintech's proprietary in-house recombinant technology. Recombinant production enables unrivalled batch-to-batch consistency, easy scale-up, and future security of supply.

This conjugation ready format makes antibodies ideal for use in many applications including: ELISAs, multiplex assays requiring matched pairs, mass cytometry, and multiplex imaging applications. Antibody use should be optimized by the end user for each application and assay.

## Background Information

CCT5 is a subunit of chaperonin containing TCP1 complex that is also known as the TCP1 ring complex (TRiC). CCT5 involves enhancing Wnt/ $\beta$ -catenin signalling activity in GCs through abrogating the interaction between E-cadherin and  $\beta$ -catenin (PMID: 35194191). The expression levels of CCT5 have been found to be upregulated in types of cancers, including breast cancer, colon cancer, lung cancer, glioblastoma, hepatocellular carcinoma and ovarian cancer (PMID: 36768350). Human CCT5 consist of 541 amino acids organized in  $\beta$ -sheets and  $\alpha$ -helixes distributed into three domains and has a predicted molecular weight of 60 kDa.

## Storage

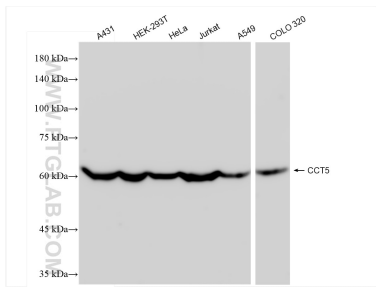
**Storage:**  
Store at -80°C.

**Storage Buffer:**  
PBS Only

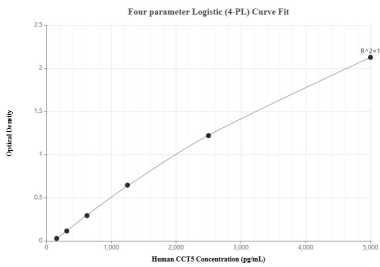
For technical support and original validation data for this product please contact:  
T: 1 (888) 4PTGLAB (1-888-478-4522) (toll free in USA), or 1(312) 455-8498 (outside USA)  
E: [proteintech@ptglab.com](mailto:proteintech@ptglab.com)  
W: [ptglab.com](http://ptglab.com)

This product is exclusively available under Proteintech Group brand and is not available to purchase from any other manufacturer.

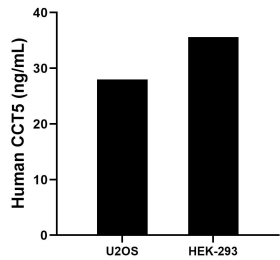
## Selected Validation Data



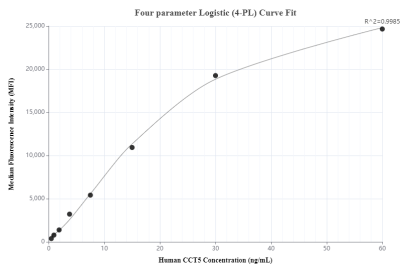
Various lysates were subjected to SDS PAGE followed by western blot with 84310-2-RR (CCT5 antibody) at dilution of 1:10000 incubated at room temperature for 1.5 hours. This data was developed using the same antibody clone with 84310-2-PBS in a different storage buffer formulation.



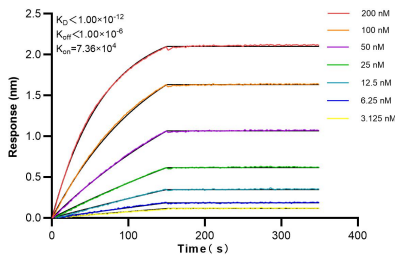
Sandwich ELISA standard curve of MP01209-1, Human CCT5 Recombinant Matched Antibody Pair - PBS only. 84310-2-PBS was coated to a plate as the capture antibody and incubated with serial dilutions of standard Ag2146. 84310-1-PBS was HRP conjugated as the detection antibody. Range: 156-5000 pg/mL



The mean CCT5 concentration was determined to be 28.01 ng/mL in U2OS cell extract based on a 3.1 mg/mL extract load and 35.60 ng/mL in HEK-293 cell extract based on a 2.0 mg/mL extract load.



Cytometric bead array standard curve of MP01209-1, CCT5 Recombinant Matched Antibody Pair, PBS Only. Capture antibody: 84310-2-PBS. Detection antibody: 84310-1-PBS. Standard: Ag2146. Range: 0.469-60 ng/mL



Biolayer interferometry (BLI) kinetic assays of 84310-2-RR against Human CCT5 were performed. The affinity constant is below 1 pM.