

For Research Use Only

MAP2 Recombinant antibody

Catalog Number: 84306-3-RR



Basic Information

Catalog Number: 84306-3-RR	GenBank Accession Number: BC038857	Purification Method: Protein A purification
Size: 100ul , Concentration: 1000 µg/ml by Nanodrop;	GeneID (NCBI): 4133	CloneNo.: 241653E9
Source: Rabbit	UNIPROT ID: P11137	Recommended Dilutions: WB 1:1000-1:4000 IHC 1:2000-1:8000 IF-P 1:125-1:500 IF-Fro 1:50-1:500
Isotype: IgG	Full Name: microtubule-associated protein 2	
Immunogen Catalog Number: AG11580	Calculated MW: 200 kDa	
	Observed MW: 280-300 kDa, 70-85 kDa	

Applications

Tested Applications:
WB, IHC, IF-P, IF-Fro, ELISA

Species Specificity:
human, mouse, rat

Note-IHC: suggested antigen retrieval with TE buffer pH 9.0; (*) Alternatively, antigen retrieval may be performed with citrate buffer pH 6.0

Positive Controls:

WB : SH-SY5Y cells, mouse brain tissue, rat brain tissue

IHC : mouse cerebellum tissue,

IF-P : rat brain tissue,

IF-Fro : mouse brain tissue,

Background Information

MAP2 (microtubule-associated protein 2) is a cytoskeleton protein abundant in the brain and has an important role in neuronal morphogenesis. Multiple high MW and low MW MAP2 isoforms are expressed within the proximal segment of axons, dendrites, and cell bodies. The expression of MAP2 is regulated in both a tissue- and developmentally-specific manner. The 280 kDa MAP2B is present throughout rat brain development, and the slightly larger MAP2A appears first during the end of the second week of postnatal life. MAP2C, composed of several bands of about 70 kDa, is present during early brain development and largely disappears from the mature brain except for the retina, olfactory bulb, and cerebellum. In addition, some isoforms with lower MW around 50-60 kDa also exist. MAP2 antibodies have been widely used to mark the neuron or dendrite formation.

Storage

Storage:
Store at -20°C. Stable for one year after shipment.
Storage Buffer:
PBS with 0.02% sodium azide and 50% glycerol pH 7.3.
Aliquoting is unnecessary for -20°C storage

*** 20ul sizes contain 0.1% BSA

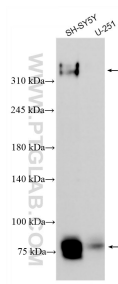
For technical support and original validation data for this product please contact:

T: 1 (888) 4PTGLAB (1-888-478-4522) (toll free in USA), or 1(312) 455-8498 (outside USA)

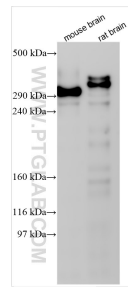
E: proteintech@ptglab.com
W: ptglab.com

This product is exclusively available under Proteintech Group brand and is not available to purchase from any other manufacturer.

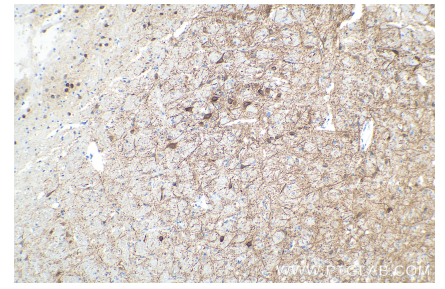
Selected Validation Data



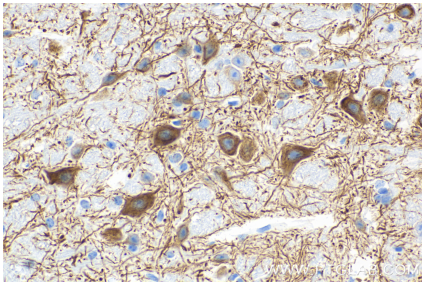
SH-SY5Y cells were subjected to SDS PAGE followed by western blot with 84306-3-RR (MAP2 antibody) at dilution of 1:2000 incubated at room temperature for 1.5 hours.



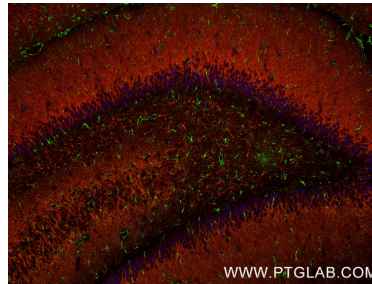
Various lysates were subjected to SDS PAGE followed by western blot with 84306-3-RR (MAP2 antibody) at dilution of 1:1000 incubated at room temperature for 1.5 hours.



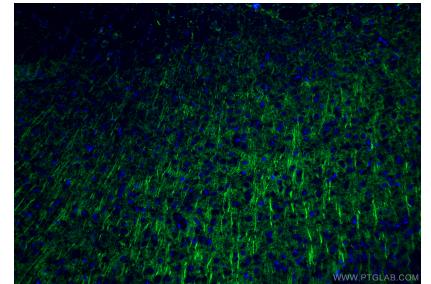
Immunohistochemical analysis of paraffin-embedded mouse cerebellum tissue slide using 84306-3-RR (MAP2 antibody) at dilution of 1:4000 (under 10x lens). Heat mediated antigen retrieval with Tris-EDTA buffer (pH 9.0).



Immunohistochemical analysis of paraffin-embedded mouse cerebellum tissue slide using 84306-3-RR (MAP2 antibody) at dilution of 1:4000 (under 40x lens). Heat mediated antigen retrieval with Tris-EDTA buffer (pH 9.0).



Immunofluorescent analysis of (4% PFA) fixed paraffin-embedded rat brain tissue using GFAP antibody (81063-1-RR, Clone: 4C6, green) at dilution of 1:250 and CoraLite®488-Conjugated Goat Anti-Rabbit IgG(H+L) (SA00013-2), MAP2 antibody (84306-3-RR, Clone: 241653E9, red) at dilution of 1:210 and FlexAble CoraLite® Plus 594 Antibody Labeling Kit for Rabbit IgG(KFA009). Heat mediated antigen retrieval with Tris-EDTA buffer (pH 9.0).



Immunofluorescent analysis of (4% PFA) fixed frozen OCT-embedded mouse brain tissue using MAP2 antibody (84306-3-RR, Clone: 241653E9) at dilution of 1:200 and CoraLite®488-Conjugated Goat Anti-Rabbit IgG(H+L) (SA00013-2).