

For Research Use Only

STUB1 Recombinant antibody

Catalog Number: 84301-1-RR



Basic Information

Catalog Number: 84301-1-RR	GenBank Accession Number: NM_005861	Purification Method: Protein A purification
Size: 100ul , Concentration: 1000 µg/ml by Nanodrop;	GeneID (NCBI): 10273	CloneNo.: 241200D7
Source: Rabbit	UNIPROT ID: Q9UNE7	Recommended Dilutions: WB 1:2000-1:10000
Isotype: IgG	Full Name: STIP1 homology and U-box containing protein 1	
	Calculated MW: 35 kDa	
	Observed MW: 35 kDa	

Applications

Tested Applications: WB, ELISA	Positive Controls: WB : HEK-293T cells, HeLa cells, Jurkat cells
Species Specificity: human	

Background Information

STUB1, also named as CHIP, SDCCAG7, UBOX1 and NY-CO-7, is a E3 ubiquitin-protein ligase which targets misfolded chaperone substrates towards proteasomal degradation. STUB1/CHIP modulates the activity of several chaperone complexes, including Hsp70, Hsc70 and Hsp90. It mediates transfer of non-canonical short ubiquitin chains to HSPA8 that have no effect on HSPA8 degradation. STUB1/CHIP mediates polyubiquitination of CYP3A4. (PMID:10330192) CHIP/STUB1 strongly reduced keratin aggregates through increased degradation of mutant K14. (PMID:20151404) STUB1/CHIP regulates NAD(P)H:quinone oxidoreductase 1 (NQO1) accumulation in aged brain, a process impaired in certain Alzheimer patients.(PMID:21220432) This antibody is specific to STUB1.

Storage

Storage:
Store at -20°C. Stable for one year after shipment.
Storage Buffer:
PBS with 0.02% sodium azide and 50% glycerol pH 7.3.
Aliquoting is unnecessary for -20°C storage

*** 20ul sizes contain 0.1% BSA

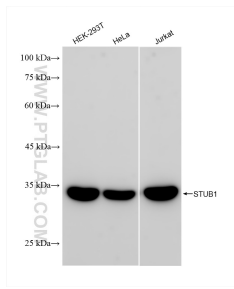
For technical support and original validation data for this product please contact:

T: 1 (888) 4PTGLAB (1-888-478-4522) (toll free in USA), or 1(312) 455-8498 (outside USA)

E: proteintech@ptglab.com
W: ptglab.com

This product is exclusively available under Proteintech Group brand and is not available to purchase from any other manufacturer.

Selected Validation Data



HEK-293T cells were subjected to SDS PAGE followed by western blot with 84301-1-RR (STUB1 antibody) at dilution of 1:5000 incubated at room temperature for 1.5 hours.