

For Research Use Only

POTEA-Specific Recombinant antibody

Catalog Number: 84298-1-RR



Basic Information

Catalog Number: 84298-1-RR	GenBank Accession Number: NM_001002920	Purification Method: Protein A purification
Size: 100ul , Concentration: 1000 µg/ml by Nanodrop;	GeneID (NCBI): 340441	CloneNo.: 241187F7
Source: Rabbit	UNIPROT ID: Q658J7	Recommended Dilutions: IHC 1:200-1:800 IF/ICC 1:125-1:500
Isotype: IgG	Full Name: POTE ankyrin domain family, member A	
	Calculated MW: 56 kDa	

Applications

Tested Applications: IHC, IF/ICC, FC (Intra), ELISA	Positive Controls: IHC : mouse ovary tissue, IF/ICC : HepG2 cells, HeLa cells
Species Specificity: human	
Note-IHC: suggested antigen retrieval with TE buffer pH 9.0; (*) Alternatively, antigen retrieval may be performed with citrate buffer pH 6.0	

Background Information

POTE A, also named A26A1 and POTE8, belongs to the POTE family. POTE has an important signaling function in the reproductive system.

Storage

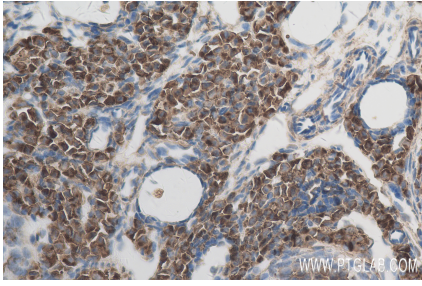
Storage:
Store at -20°C. Stable for one year after shipment.
Storage Buffer:
PBS with 0.02% sodium azide and 50% glycerol pH 7.3.
Aliquoting is unnecessary for -20°C storage

*** 20ul sizes contain 0.1% BSA

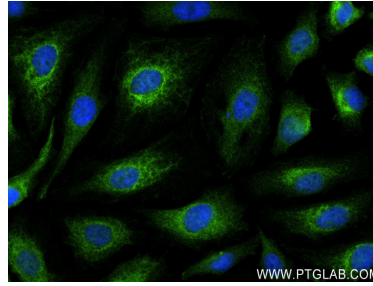
For technical support and original validation data for this product please contact:
T: 1 (888) 4PTGLAB (1-888-478-4522) (toll free in USA), or 1(312) 455-8498 (outside USA)
E: proteintech@ptglab.com
W: ptglab.com

This product is exclusively available under Proteintech Group brand and is not available to purchase from any other manufacturer.

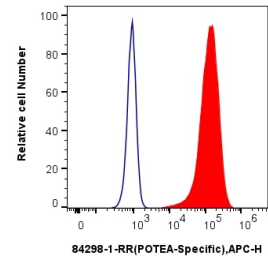
Selected Validation Data



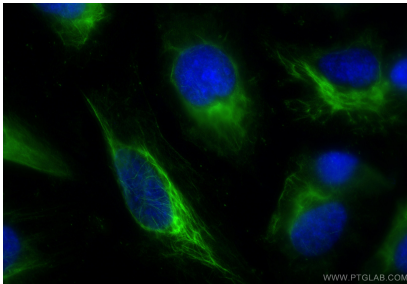
Immunohistochemical analysis of paraffin-embedded mouse ovary tissue slide using 84298-1-RR (POTEA-Specific antibody) at dilution of 1:400 (under 40x lens). Heat mediated antigen retrieval with Tris-EDTA buffer (pH 9.0).



Immunofluorescent analysis of (4% PFA) fixed HepG2 cells using POTEA-Specific antibody (84298-1-RR, Clone: 241187F7) at dilution of 1:250 and CoraLite®488-Conjugated AffiniPure Goat Anti-Rabbit IgG(H+L) (SA00013-2).



1x10⁶ HeLa cells were intracellularly stained with 0.25 ug POTEA-Specific Recombinant antibody (84298-1-RR, Clone:241187F7) and APC-Conjugated Goat Anti-Rabbit IgG(H+L)(red), or 0.25 ug Isotype Control (blue). Cells were fixed with 4% PFA and permeabilized with Flow Cytometry Perm Buffer (PF00011-C).



Immunofluorescent analysis of (-20°C Ethanol) fixed HeLa cells using POTEA-Specific antibody (84298-1-RR, Clone: 241187F7) at dilution of 1:500 and CoraLite®488-Conjugated Goat Anti-Rabbit IgG(H+L) (SA00013-2).