

For Research Use Only

POTEA-Specific Recombinant antibody, PBS Only

Catalog Number: 84298-1-PBS



Basic Information

Catalog Number:

84298-1-PBS

Size:

100ug, Concentration: 1 mg/ml by
Nanodrop;

Source:

Rabbit

Isotype:

IgG

GenBank Accession Number:

NM_001002920

GeneID (NCBI):

340441

UNIPROT ID:

Q6S8J7

Full Name:

POTE ankyrin domain family,
member A

Calculated MW:

56 kDa

Purification Method:

Protein A purification

CloneNo.:

241187F7

Applications

Tested Applications:

IHC, IF/ICC, FC (Intra), Indirect ELISA

Species Specificity:

human

Background Information

POTEA, also named A26A1 and POTE8, belongs to the POTE family. POTE has an important signaling function in the reproductive system.

Storage

Storage:

Store at -80°C.

Storage Buffer:

PBS Only

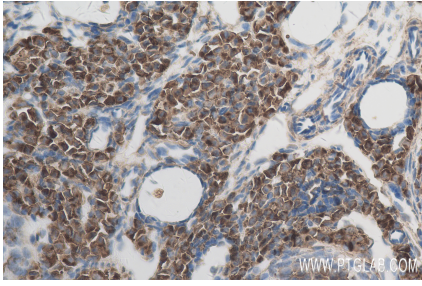
For technical support and original validation data for this product please contact:

T: 1 (888) 4PTGLAB (1-888-478-4522) (toll free
in USA), or 1(312) 455-8498 (outside USA)

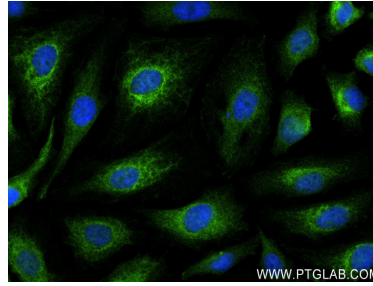
E: proteintech@ptglab.com
W: ptglab.com

This product is exclusively available under Proteintech Group brand and is not available to purchase from any other manufacturer.

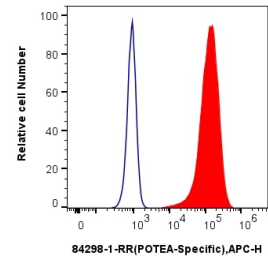
Selected Validation Data



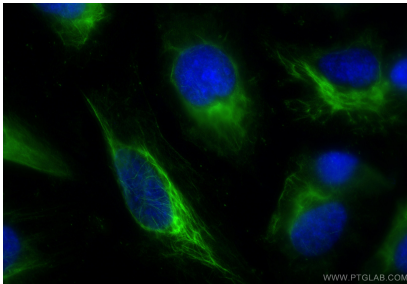
Immunohistochemical analysis of paraffin-embedded mouse ovary tissue slide using 84298-1-RR (POTEA-Specific antibody) at dilution of 1:400 (under 40x lens). Heat mediated antigen retrieval with Tris-EDTA buffer (pH 9.0). This data was developed using the same antibody clone with 84298-1-PBS in a different storage buffer formulation.



Immunofluorescent analysis of (4% PFA) fixed HepG2 cells using POTEA-Specific antibody (84298-1-RR, Clone: 241187F7) at dilution of 1:250 and CoraLite®488-Conjugated AffiniPure Goat Anti-Rabbit IgG(H+L) (SA00013-2). This data was developed using the same antibody clone with 84298-1-PBS in a different storage buffer formulation.



1x10⁶ HeLa cells were intracellularly stained with 0.25 ug POTEA-Specific Recombinant antibody (84298-1-RR, Clone:241187F7) and APC-Conjugated Goat Anti-Rabbit IgG(H+L)(red), or 0.25 ug Isotype Control (blue). Cells were fixed with 4% PFA and permeabilized with Flow Cytometry Perm Buffer (PF00011-C). This data was developed using the same antibody clone with 84298-1-PBS in a different storage buffer formulation.



Immunofluorescent analysis of (-20°C Ethanol) fixed HeLa cells using POTEA-Specific antibody (84298-1-RR, Clone: 241187F7) at dilution of 1:500 and CoraLite®488-Conjugated Goat Anti-Rabbit IgG(H+L) (SA00013-2). This data was developed using the same antibody clone with 84298-1-PBS in a different storage buffer formulation.